

SURVEY FOR A EASEMENT IN LOT 5 FRUITVALE - SEC. 12, T.27S. R.6W. W.M.

FOR: JOHNSON & WHELCHER
BY: BAUGHMAN SURVEYING SERVICE

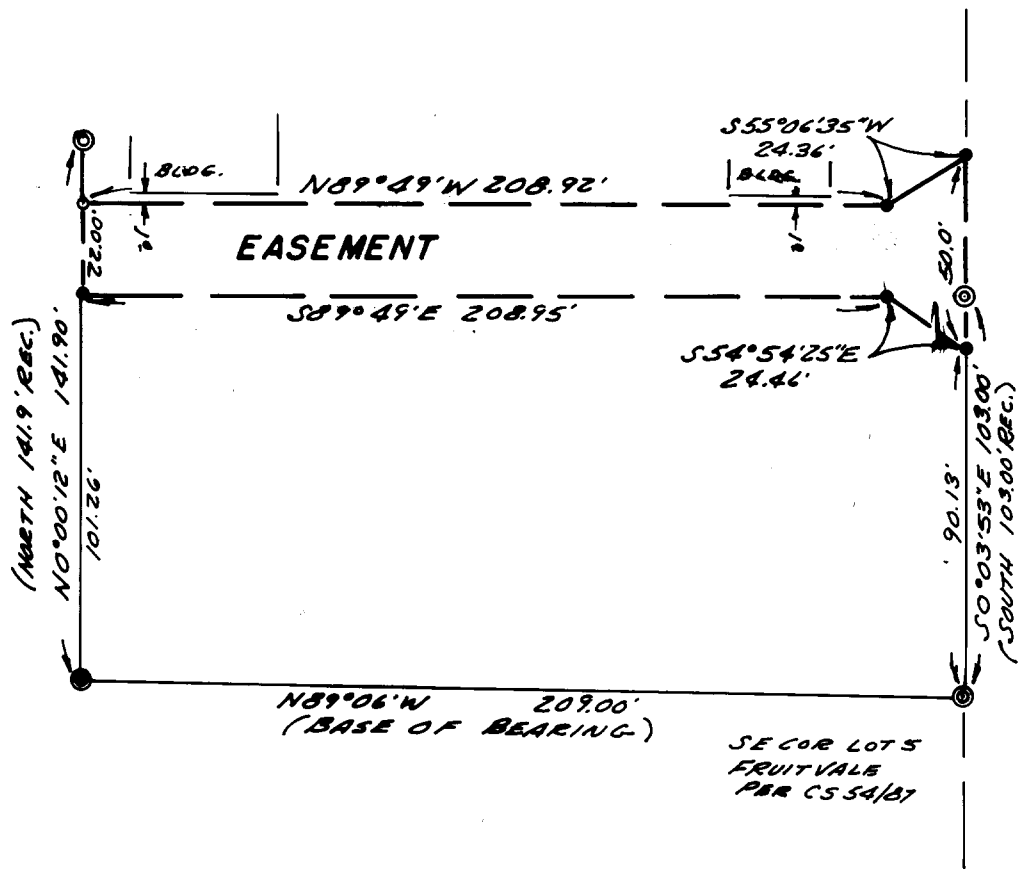
OCTOBER 1975 SCALE: 1" = 50'

COUNTY SURVEYORS FILE DATA
DO NOT REMOVE FROM OFFICE

FILED *mg*
RECEIVED *mg*

COUNTY SURVEYOR
DOUGLAS COUNTY, ORE.

mg



NORTH STEPHENS ST.

LEGEND

- — Set 1/2" iron rod
- — Set nail in conc.
- ⊙ — Found 3/4" iron rod
- ⊙ — Found steel shaft

BASED ON CS 54/87

REGISTERED
PROFESSIONAL
LAND SURVEYOR

Glenn S. Baughman

OREGON
JULY 4, 1968
GLENN S. BAUGHMAN
536

35339

C. S. File No. 58/71-1

C. S. File No. 58/71-1