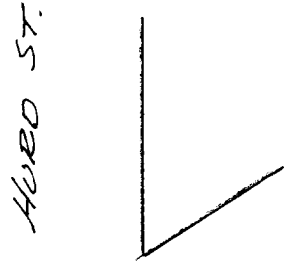
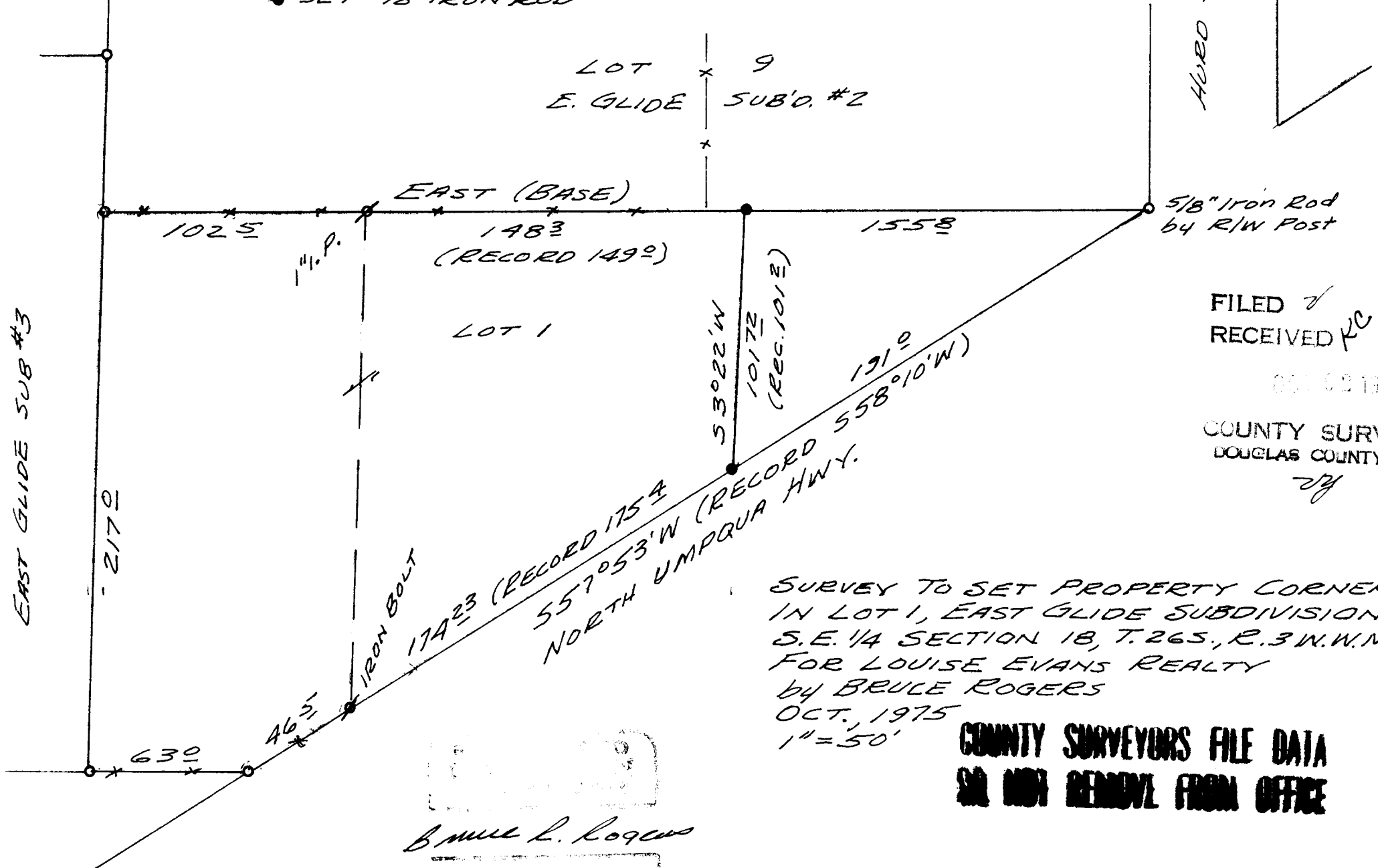


- - FOUND ORIGINAL MONUMENTS EAST GLIDE SUB'D.
- ⊗ - FOUND OTHER MONUMENTS
- - SET 5/8" IRON ROD



5/8" Iron Rod  
by R/W Post

FILED ✓  
RECEIVED KC

OCT 22 1975

COUNTY SURVEYOR  
DOUGLAS COUNTY, ORE.

*BR*

SURVEY TO SET PROPERTY CORNERS  
IN LOT 1, EAST GLIDE SUBDIVISION  
S.E. 1/4 SECTION 18, T. 26 S., R. 3 W., N.M.  
FOR LOUISE EVANS REALTY  
BY BRUCE ROGERS  
OCT. 1975  
1" = 50'

**COUNTY SURVEYORS FILE DATA  
SH NOT REMOVE FROM OFFICE**

*Bruce L. Rogers*

