

FILED *mg*  
RECEIVED *mg*

SEP 24 1975

SECT. 1, T. 23 S. R. 6 W W.M.

COUNTY SURVEYOR  
DOUGLAS COUNTY, ORE.

Scale 1" = 200'

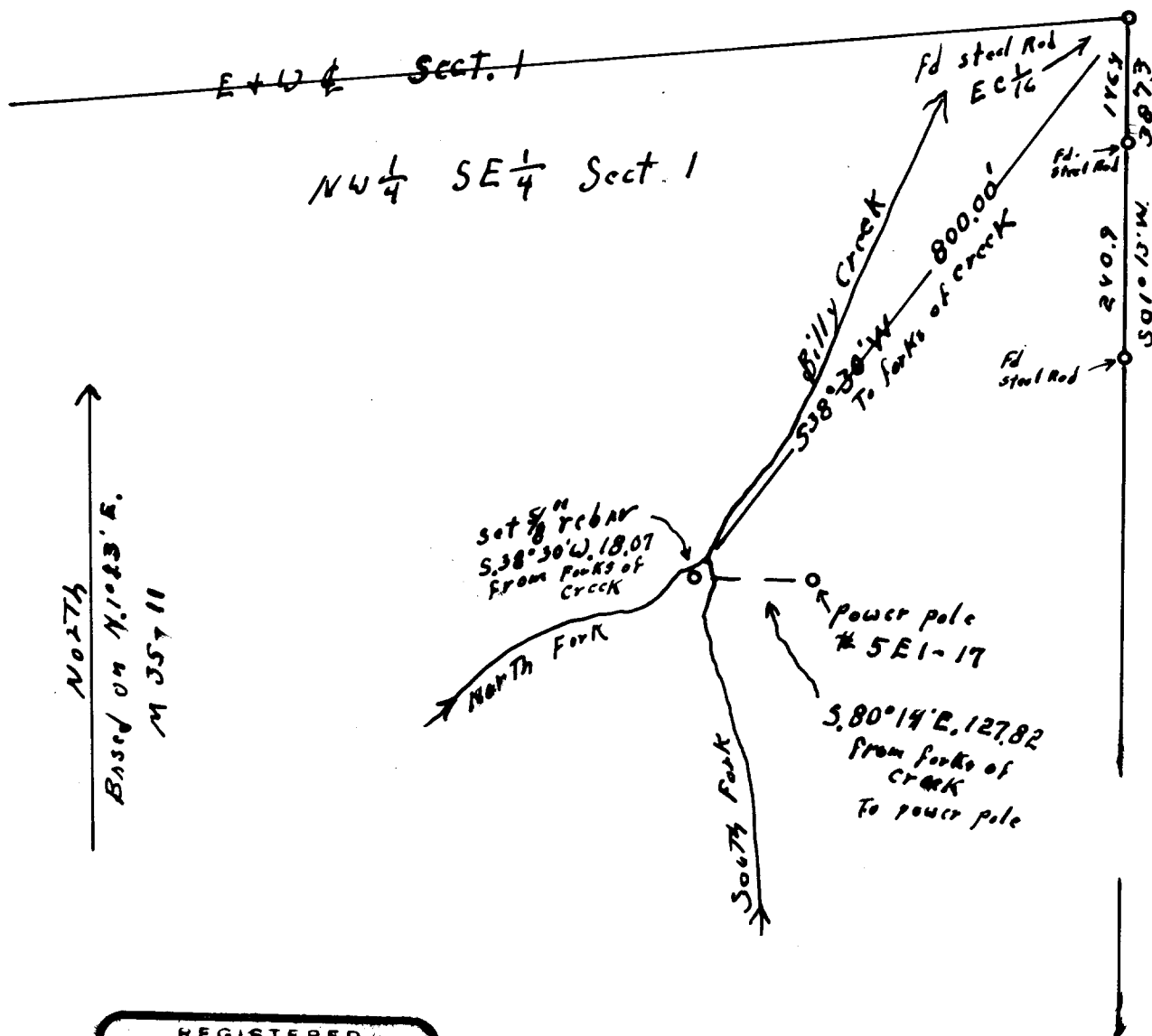
Sept. 23, 1975

for

Commercial Title Co.

Roseburg, Oreg.

**COUNTY SURVEYORS FILE DATA  
DO NOT REMOVE FROM OFFICE**



REGISTERED  
OREGON  
LAND SURVEYOR

*Wilford N. Haines*  
MAY 7, 1948  
WILFORD N. HAINES  
239

58/68-1