

58/67-2

SURVEY TO ESTABLISH PROPERTY LINE  
L6 "HALLS RIPPLING RIVER ACRES" S21 T26S R5W W.M.  
FOR VINCENT SUMMERFORD  
BY BAUGHMAN SURVEYING SERVICE 9-5-75 SCALE 1"=50'

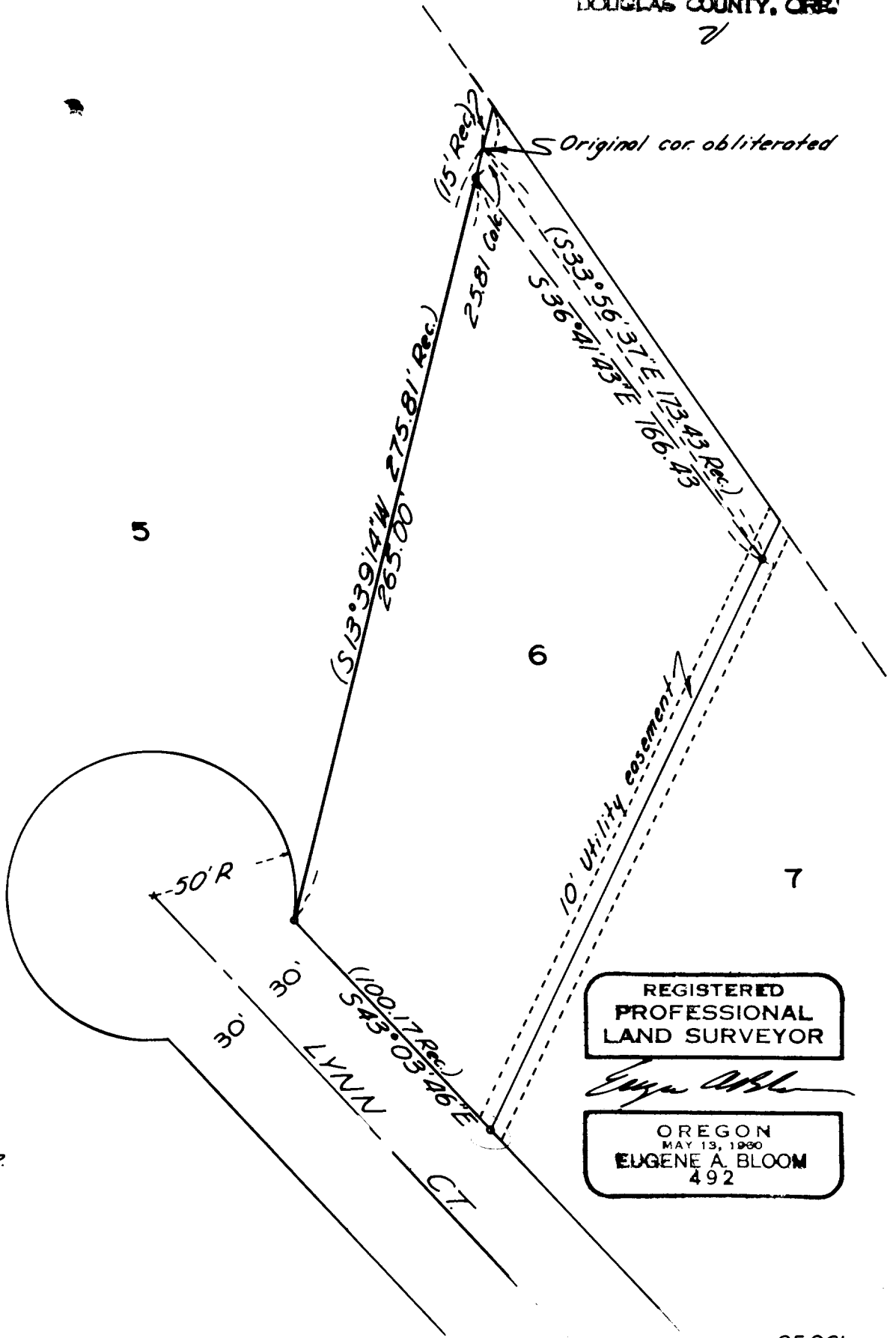
COUNTY SURVEYORS  
DO NOT REMOVE FROM OFFICE

FILED mg  
RECEIVED My

MAY 19 1975

COUNTY SURVEYOR  
DOUGLAS COUNTY, ORE.  
7

Based on N. Line "LYNN CT."



LEGEND  
o Fd. 3/4" I.P.  
• Set 5/8" I.R.

REGISTERED  
PROFESSIONAL  
LAND SURVEYOR  
*Eugene A. Bloom*  
OREGON  
MAY 13, 1900  
EUGENE A. BLOOM  
492

35261

C. S. File No. 58/67-2