

# SURVEY FOR PROPERTY DESCRIPTION (LEASE) IN SECTION 10 T28S R7W WM

FOR: WALTER OSBORNE  
BY BAUGHMAN SURVEYING SERVICE

COUNTY SURVEYORS FILE  
DO NOT REMOVE FROM OFFICE

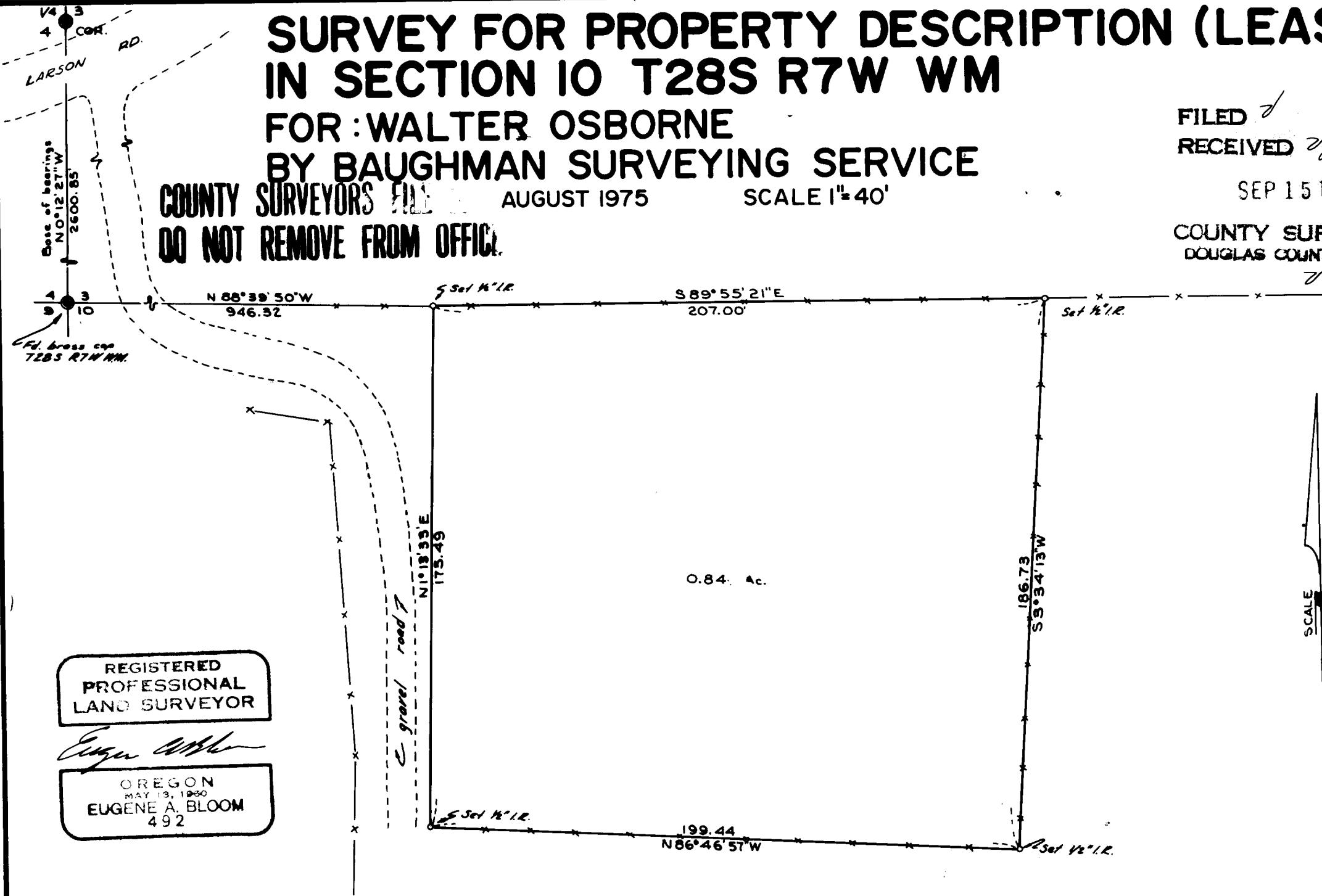
AUGUST 1975

SCALE 1"=40'

FILED *d*  
RECEIVED *lc*

SEP 15 1975

COUNTY SURVEYOR  
DOUGLAS COUNTY, ORE.



REGISTERED  
PROFESSIONAL  
LAND SURVEYOR

*Eugene A. Bloom*

OREGON  
MAY 13, 1930  
EUGENE A. BLOOM  
492

