

Survey For Jessie Swopes Lot 23, Watts Acres "Plat 2" & A Portion of Lot 9, Watts Acres in Sec. 11, T28S, R6W, W.M.

By: BHW Eng. & Surveying, Inc.

Scale 1" = 50'

REGISTERED
PROFESSIONAL
LAND SURVEYOR

Date: Sept. 1975

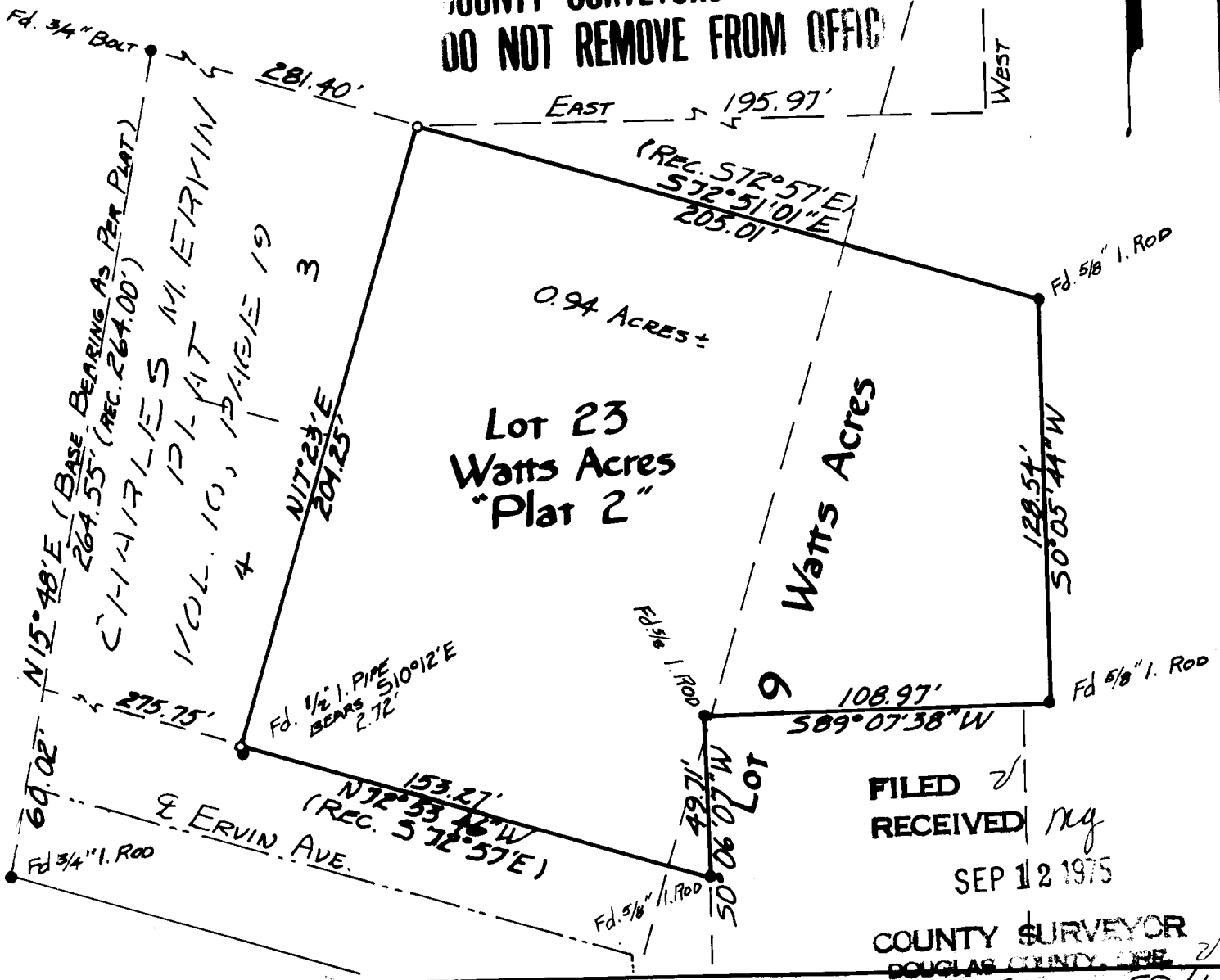
Romano E. Ware

OREGON
NOV. 16, 1973
ROMANSO E. WARE
1005

INITIAL POINT
WATTS ACRES
(AS PER PLAT)

- o - SET 3/4" I. PIPE
- - Fd. MONUMENTS

**COUNTY SURVEYORS FILE DAI
DO NOT REMOVE FROM OFFICE**



FILED
RECEIVED *mg*
SEP 12 1975

COUNTY SURVEYOR
DOUGLAS COUNTY, ORE.

C.S. File No. 58/666