

SURVEY FOR PROPERTY LINE IN SECTION 25, T.27S.R.6W.W.M.

FOR: ANNIE LEWIS

BY: BAUGHMAN SURVEYING SERVICE

AUGUST 1975

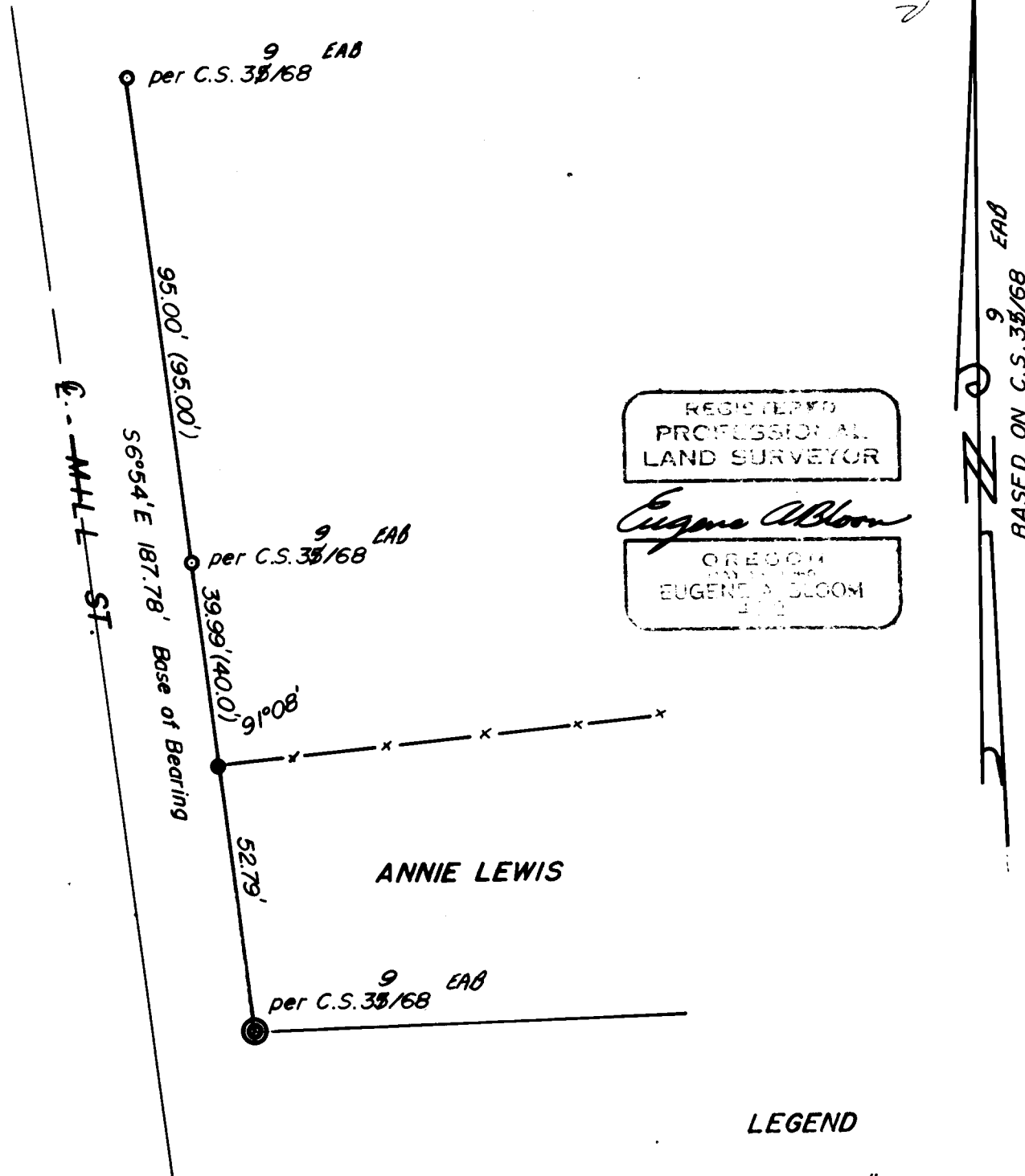
SCALE: 1" = 30'

FILED ✓
RECEIVED 2/9

COUNTY SURVEYORS FILE DATA
DO NOT REMOVE FROM OFFICE

AUG 11 1975

COUNTY SURVEYOR
DOUGLAS COUNTY, ORE.



REGISTERED
PROFESSIONAL
LAND SURVEYOR

Eugene Bloom

OREGON
EUGENE A. BLOOM
1972

LEGEND

- — Set 5/8" iron rod
- — Found 3/4" iron bolt
- ⊙ — Found 1" iron pipe

Job No. 35155

C. S. File No. 58/60-3