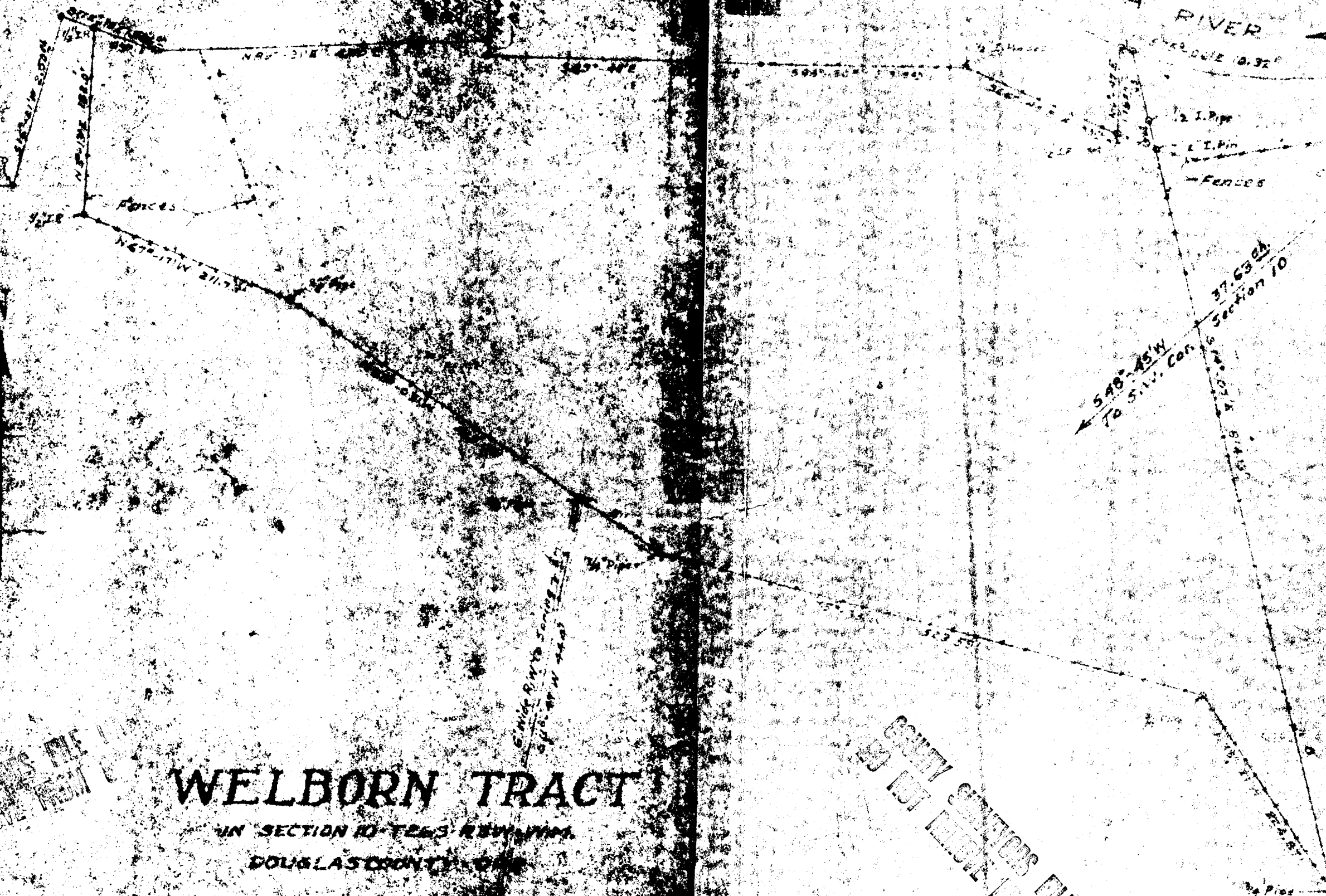


Valley to Dr. Dean Vol 92 Pg. 594

UMINGUA RIVER



FILED
RECEIVED *ry*
AUG 11 1975
COUNTY SURVEYOR
DOUGLAS COUNTY, ORE.

WELBORN TRACT

IN SECTION 10 T26S R25W PM
DOUGLAS COUNTY, ORE.

Examined & Plat'd by SPRING
JAMES R. DAUGHERTY
CIVIL ENGINEER
DOUGLAS COUNTY, ORE.



COUNTY SURVEYORS FILE DATA
DO NOT REMOVE FROM OFFICE