

E-LS/89

SURVEY TO ESTABLISH PROPERTY COR'S.

PART OF LOT 4, ALL OF LOTS 5 & 8 BLOCK 2

"CRAIGS ADDITION" IN S22 T29S R5W W.M.

FOR BILL McCAULEY SEPT 1975

BY BAUGHMAN SURVEYING SERVICE SCALE 1"=40'

COUNTY SURVEYORS FILE DATA
DO NOT REMOVE FROM OFFICE

FILED *mg*
RECEIVED *mg*
SEP 19 1975

REGISTERED
PROFESSIONAL
LAND SURVEYOR

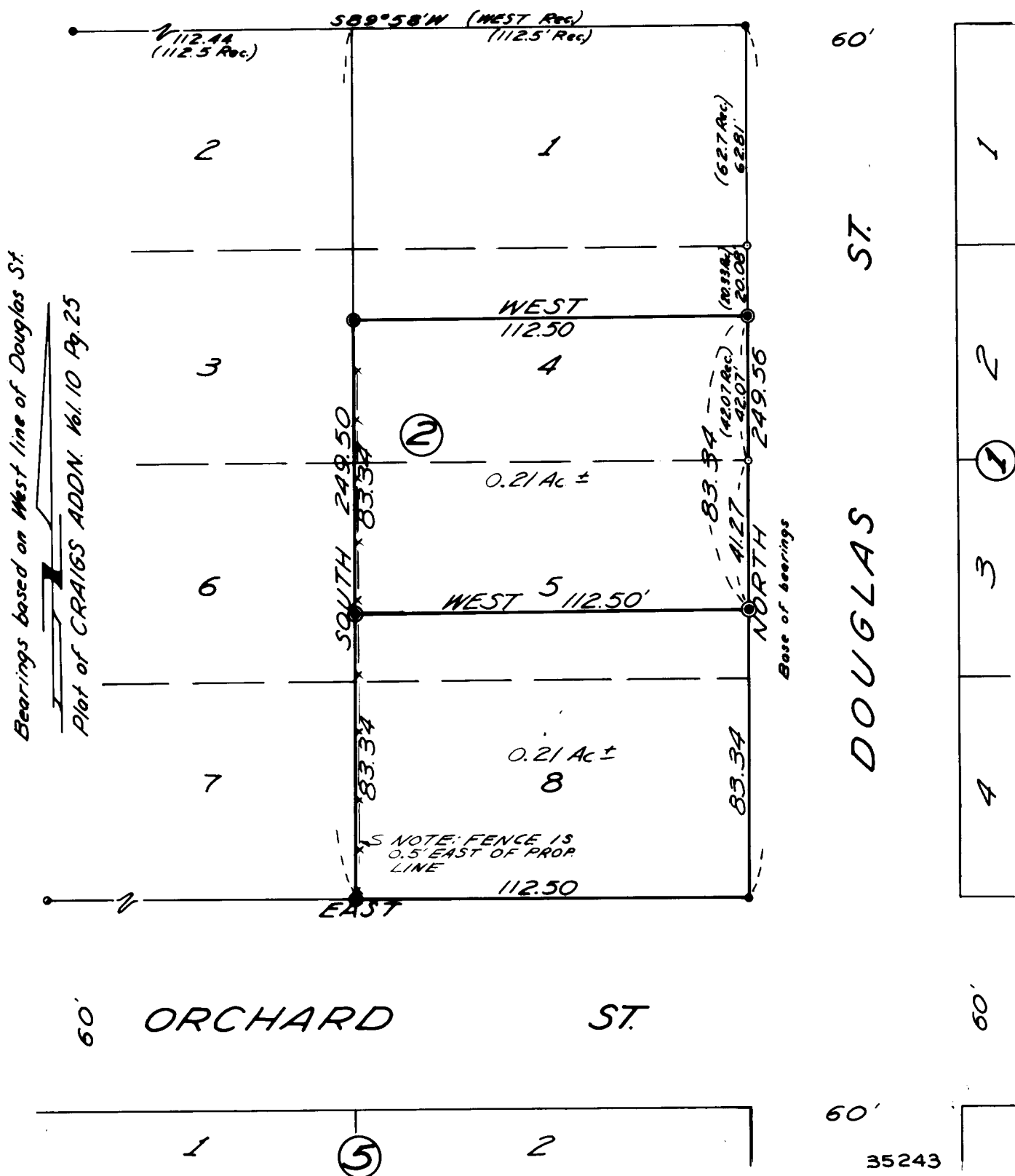
Glenn S. Baughman

OREGON
JULY 14, 1961
GLENN S. BAUGHMAN
536

- Set 5/8" I.R.
- Fd. 3/4" I.R.
- Fd. 1/2" I.R.
- Fd. 1/2" I.R.
- Brass Cap

COUNTY SURVEYOR
DOUGLAS COUNTY, ORE.

MADRONA DRIVE



58/57-3