

SURVEY TO SET PROPERTY CORNERS

In Lot 5 of "West Central Tracts", Sutherlin, Oregon

Sec. 19, T25S, R5W, W.M.

Surveyed for Rowe R. & Francis L. Couch

Surveyed by Victor M. McLind

May 1975

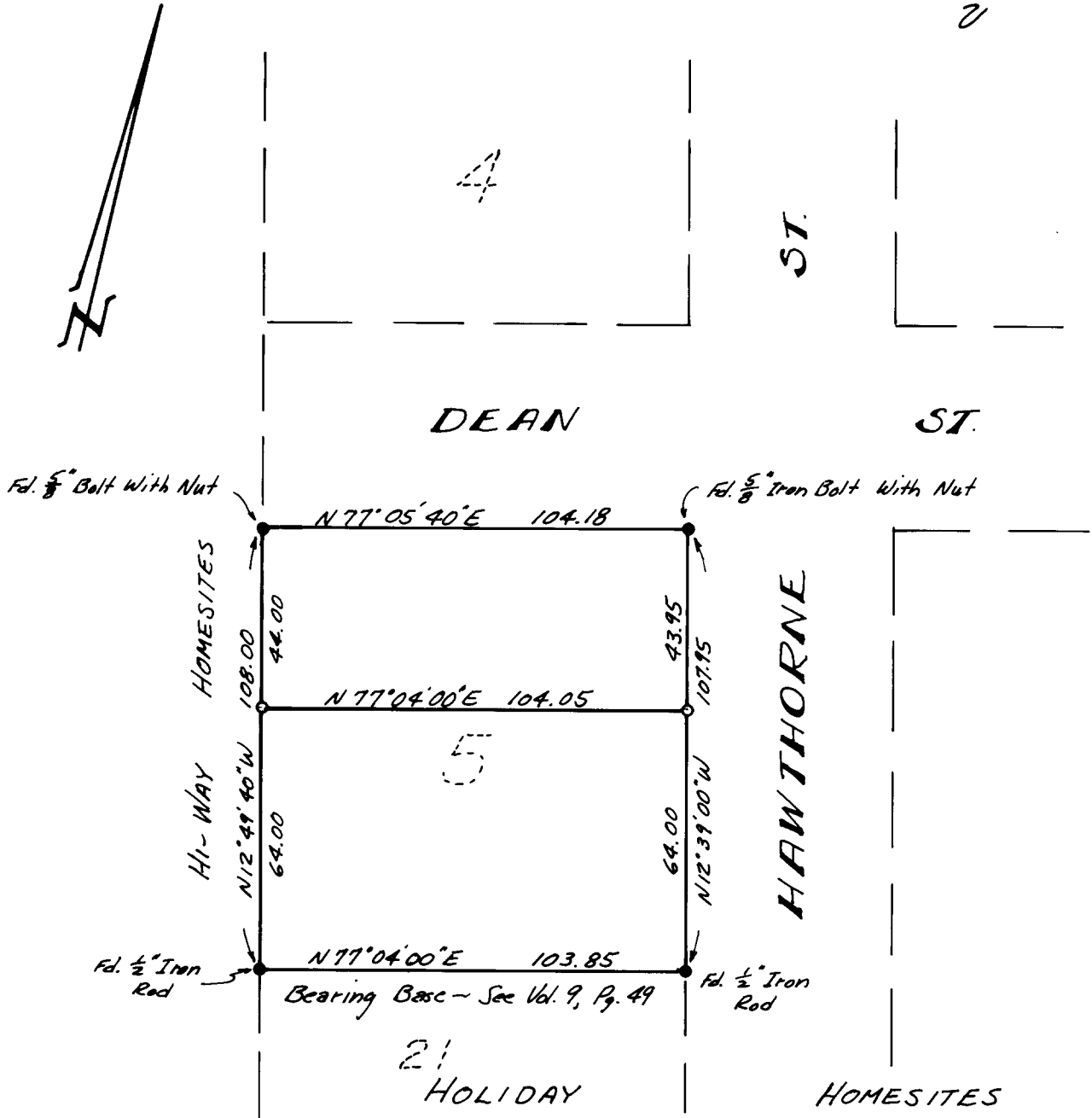
Scale: 1" = 40'

FILED ✓
RECEIVED ✓

MAY 6 1975

COUNTY SURVEYOR
DOUGLAS COUNTY, OREG.

✓



COUNTY SURVEYOR
DO NOT REMOVE FROM OFFICE

○ ~ Indicates Set 5/8" Iron Rod

REGISTERED
PROFESSIONAL
LAND SURVEYOR

Victor M. McLind

DOUGLAS COUNTY
REGISTERED PROFESSIONAL
LAND SURVEYOR

C. S. File No. 58/50-1