

COUNTY SURVEYORS FILE OFFICE
DO NOT REMOVE FROM OFFICE

FILED ✓
RECEIVED 2/27

Survey for Bill Johnson Garden Homes Subdivision

Lots 11 & 12, Block 9
Section 14, T27S, R6W, W.M.

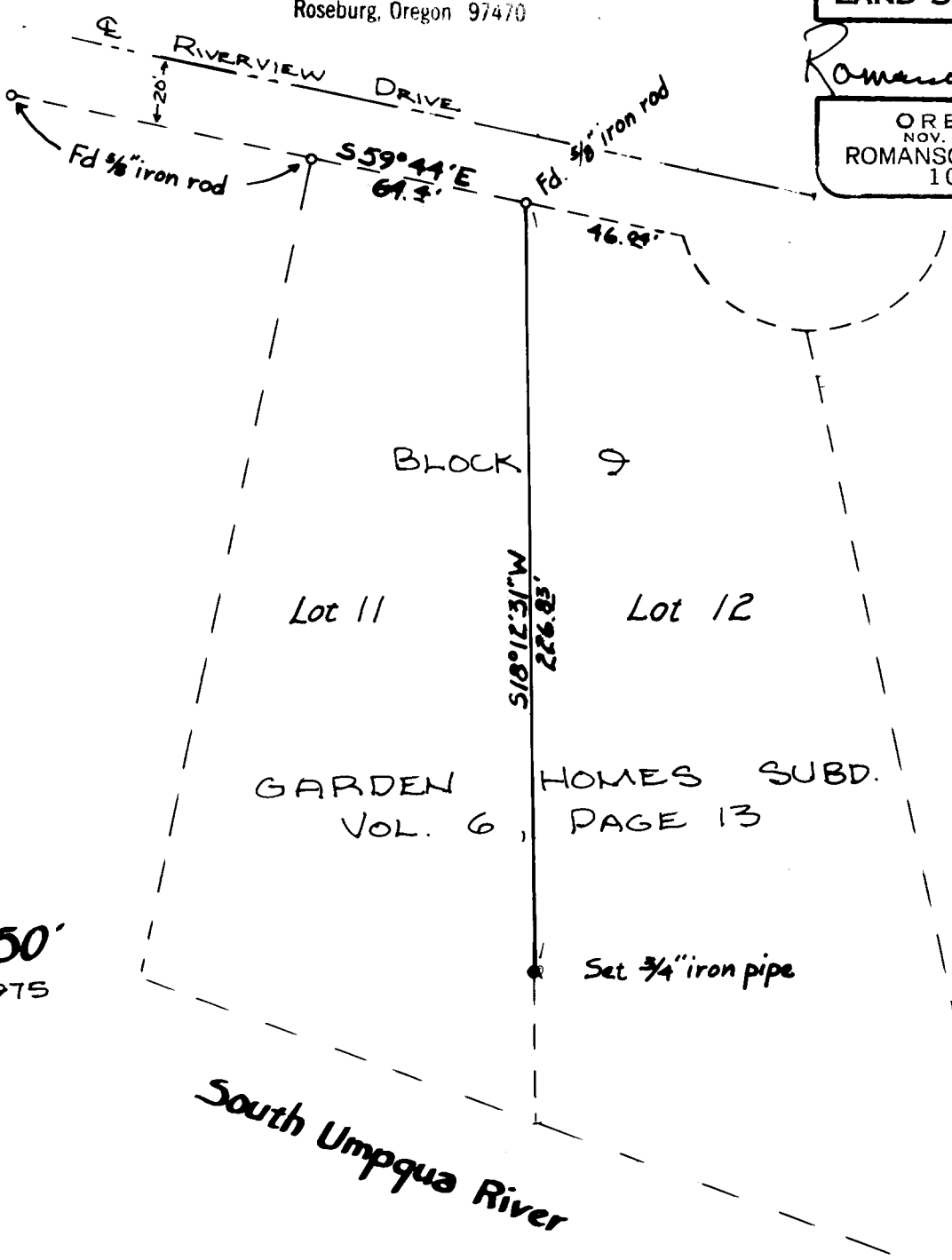
CLERK OF
COUNTY, ORE.

BHW ENGINEERING & SURVEYING, INC.
Terminal Bldg. Municipal Airport
Roseburg, Oregon 97470

REGISTERED
PROFESSIONAL
LAND SURVEYOR

Romano E. Ware

OREGON
NOV. 16, 1973
ROMANSO E. WARE
1005



Scale 1" = 50'
APRIL, 1975