

RE-ESTABLISHMENT OF THE EAST ¼ CORNER OF SECTION 19  
 TOWNSHIP 21 SOUTH, RANGE 11 WEST  
 FOR

FILED ✓  
 RECEIVED ✓

DOUGLAS COUNTY LAND DEPARTMENT

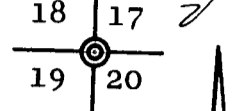
APR 15 1975

**COUNTY SURVEYORS FILE DATA  
 DO NOT REMOVE FROM OFFICE**

COUNTY SURVEYOR  
 DOUGLAS COUNTY, ORE.

NORTHEAST COR. SECTION 19

Found 1¼" I.P. buried approx. 5" in pasture  
 as described by Langlitz and Earle, Co. Sur-  
 veyors Office, C.S. 57/12, Nov. 1974



EAST ¼ COR. SECTION 19

Set iron pipe with brass cap from which:

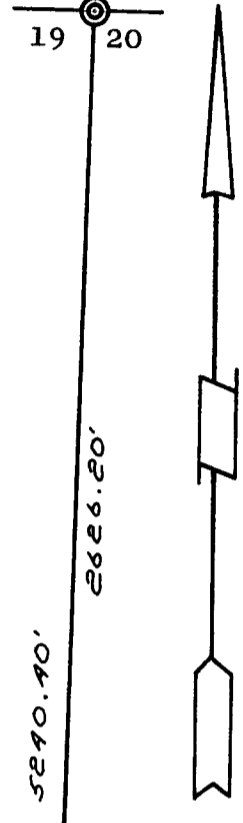
60" Fir brs. N 65° W, 16.1' to PK nail  
 in face, scribed ¼ S 19 BT

6" Fir brs. N 42½° E, 14.6' to center  
 Scribed ¼ S 20 BT

60" Fir stump brs. N 16° E, 22.2' to  
 center. Not marked

3x3 Post brs. S 49° W, 3.5'

Corner is approx. 60 feet West of County Road #195 A



SOUTHEAST COR. SECTION 19

Found 1¼" iron pipe from which:

7" Fir brs. N 21° E, 3.3', orig. BT

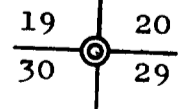
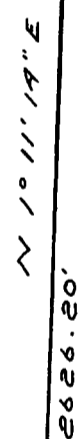
14" Cedar brs. N 1° E, 3.8' to center  
 Scribed S 20 BT

18" Hemlock brs. S 14½° W, 26.3' to center  
 Scribed S 30 BT

28" Hemlock brs. S 81½° W, 30.3' to center  
 Scribed S 30 BT

40" Hemlock brs. N 22¼° W, 31.8' to face  
 Scribed S 19 BT

Corner is approx. 420 ft. South of County Road #195 A



Basis for brg. - True from solar observation

Scale: 1" = 600' April 15, 1975

Var. 19½° East

REGISTERED  
 PROFESSIONAL  
 LAND SURVEYOR  
*Richard J. Hintz*  
 OREGON  
 MAY 13, 1960  
 RICHARD J. HINTZ  
 497