

COUNTY SURVEYORS FILE DATA
DO NOT REMOVE FROM OFFICE

SUBDIVISION

SEC. 5, TWP. 25 S., RGE. 8 W., W.M.

WEYERHAEUSER COMPANY

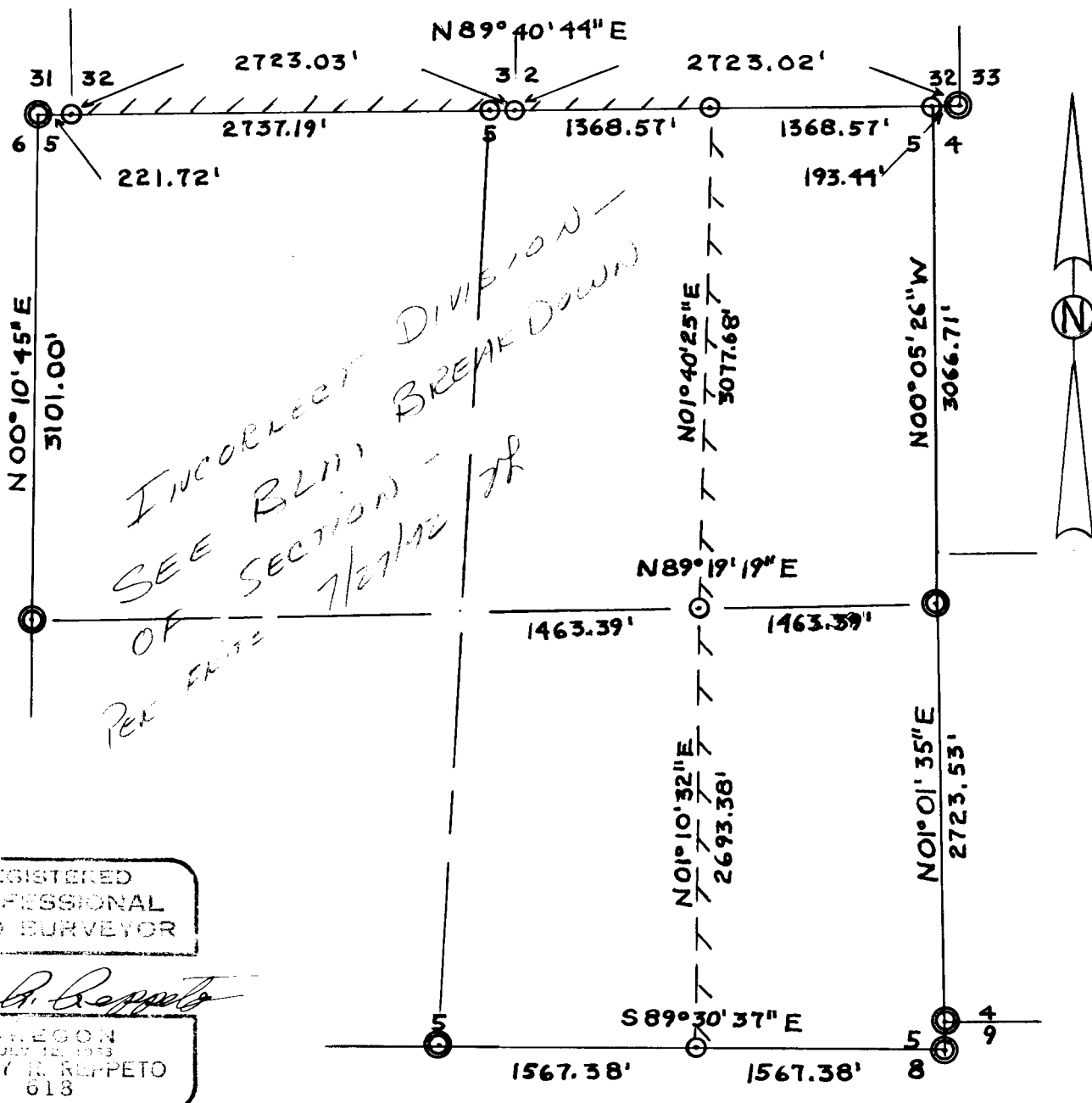
SCALE : 1" = 1,000'

DATE : MARCH 6, 1975

FILED ✓
RECEIVED ✓

APR 14 1975

COUNTY SURVEYOR
DOUGLAS COUNTY, ORE.



REGISTERED
PROFESSIONAL
LAND SURVEYOR

Henry R. Rupperto

OREGON
JULY 12, 1953
HENRY R. RUPPETO
618

LEGEND

- ⊙ CORNERS FOUND
- CORNERS SET
- /// PROPERTY LINE MARKED

FILED
RECEIVED *dy*

APR 14 1975

COUNTY SURVEYOR
SUBDIVISION OF SECTION 5, TOWNSHIP 25 SOUTH, RANGE 8 WEST COUNTY, ORE.
WILLAMETTE MERIDIAN

Theodolite and slope chain survey.

This survey was made for Weyerhaeuser Company, North Bend, Oregon
by H. R. Reppeto; ORLS #618.

Helpers:

W. L. Little
M. S. McDowell
H. A. Lester
W. A. Hutchinson

Date of survey: March 1974 - March 1975.

Filed for record at the Douglas County Surveyor's Office: 4-14-75
Douglas County Surveyor's File No. 58/45.

Distribution:

Douglas County Surveyor's Office
Weyerhaeuser Company

After a diligent and thorough search was made by this surveyor
and his helpers, the following corners were not found and
considered lost.

The closing corner common to Sections 4 and 5, Twp. 25 South,
Rge. 8 West.
The South 1/4 Corner Sec. 32, Twp. 24 South, Rge. 8 West
The North 1/4 Corner Sec. 5, Twp. 25 South, Rge. 8 West
The corner common to Sec.'s 31 and 32, Twp. 24 South, Rge. 8 West

The following corners were found and used for control:

Section corner common to Sections 32 and 33 along the township
line, Twp. 24 South, Rge. 8 West
East 1/4 Corner Section 5, Twp. 25 South, Rge. 8 West
Southeast Corner Section 5, Twp. 25 South, Rge. 8 West
South 1/4 Corner Section 5, Twp. 25 South, Rge. 8 West
West 1/4 Corner Section 5, Twp. 25 South, Rge. 8 West
Closing Corner Sections 5 and 6, Twp. 25 South, Rge. 8 West

Closed Theodolite and chain traverses were run and true line determined for the subdivision.

Bearings were based on solar observations.

The compass rule was used in balancing the closed traverses.

A closure of not less than 1 in 5,000 was obtained both for chaining and angles.

Distances to bearing trees are horizontal.

SETTING PROPERTY CORNERS AND DETERMINATION OF THE TRUE LINE

The center of Section 5 was determined by the intersection of the N-S and E-W center lines of said section. All of the following corners were set by single proportional measurement: Closing Corner of Sections 4 and 5; E 1/16 Corner on the North line of Sec. 5; S 1/4 Sec. 32, T24S, R8W; N 1/4 Sec. 5, T25S, R8W; SW Corner Sec. 32, T24S, R8W; CE 1/16 Sec. 5; E 1/16 on the South line Sec. 5. All subdivisional corners were set by transit and chain from the two nearest control hubs.

All corners were referenced by the, "Weyerhaeuser Method". A, "W", nail driven low in the tree. An embossed aluminum plate nailed just above the nail. Stamped on the plate is the bearing and horizontal distance from the nail to the named corner. The 1/16 corner references are scribed on one BT, all others are scribed on two BT's. The corner name and BT is scribed above the plates. All corner references were set by staff compass and chain using an East declination of 20°.

Offsets in a cardinal direction were calculated from each control hub to the true line. Trees were marked with two blazes angled toward the true line. A 2"x8" aluminum property line tag was nailed to the tree facing the true line. Red and white striped plastic flagging ribbon was also hung along the true line.

STANDARD CORNER OF SECTIONS 32 and 33, T24S, R8W. FOUND: ✓

Temporary post in place of brass cap. Brass cap was removed by B.L.M. because of future logging in the area. The brass cap reading, U.S. Dept. of Interior B.L.M. Cadastral Survey 1962, was at the 50" Fir B.T. Scribing visible. B.L.M. BT tag reads: T24S - R8W, Sec. 32 corner approximately 91 links S42 E.

24" Hemlock scribed T24S, R8W, S33BT. B.L.M. BT Tag,
T24S, R8W Sec. 33 corner approximately 119 links S30°W.

E 1/4 CORNER SEC. 5 - T25S - R8W. FOUND:

Brass cap by Douglas County Surveyor 1968 tags and original
BT's.

SE CORNER SEC. 5 - T25S - R8 W. FOUND:

Brass cap by Douglas County Surveyor 1967.
12" Hemlock W. Co. Tag and "W" nail N09°30'W 21.0 feet.
14" Hemlock W. Co. Tag and "W" nail S48°W 40.8 feet.

1/4 CORNER BETWEEN SEC.'S 5 and 8, T25S, R8W. FOUND:

#84 T25S-8 ✓

1" iron pipe set by Weyerhaeuser Company,
12" Cedar, W. Co. Tag and "W" nail N20°W 27.5 feet.
50" Cedar, W. Co. Tag and "W" nail S60°E 9.8 feet.
B.L.M. tags and original BT's.

1/4 CORNER BETWEEN SEC.'S 5 and 6, T25S, R8W. FOUND:

3/4" iron pipe.
13" Fir closed face, W. Co. Tag and "W" nail N50°E 6.2 feet.
14" Fir W. Co. Tag and "W" nail N21°W 29.8 feet.
The corner was set for Weyerhaeuser Co. by O.R.L.S., #752
D. L. Peel in 1967.

CLOSING CORNER OF SEC.'S 5 and 6, T25S, R8W. FOUND:

3/4" iron pipe.
36" Cedar W. Co. Tag and "W" nail S52°E 24.0 feet.
28" Maple; scribing visible W. Co. Tag and "W" nail S17°W 13.5 feet.
Set by O.R.L.S. #752; D. L. Peel in 1967.

CLOSING CORNER OF SEC.'S 4 and 5, T25S, R8W. SET:

#85 T25S-8 ✓
#86 T24S-8 ✓

Brass cap in rock outcrop; stamped NE S5.

Referenced by:

48" Fir S66 E 18.8 feet, "W" nail, W. Co Tag reads:
Sec. 4, T25S, R8W, 18.8 feet N66°W to NW Cor. Scribed
S4BT. 58" Fir S73°W 81.0 feet. "W" nail, W. Co. Tag reads:
Sec. 5, T25S, R8W, 81.0 feet N73°E to NE Cor., Scribed S5BT.

E 1/16 ON THE NORTH LINE OF SEC. 5, T25S, R8W. SET:

Brass cap in a large boulder approximately 8 feet high by
10 feet wide by 20 feet deep on North bank of creek;
stamped E 1/16 S5.

Referenced by:

48" Fir S21°W 27.5 feet; "W" nail, W. Co. Tag reads:
Sec. 5, T25S, R8W, 27.5 feet N21°E to E 1/16 Cor.
12" Hemlock S24°E 51.6 feet; "W" nail, W. Co. Tag reads:
Sec. 5, T25S, R8W, 51.6 feet N24°W to E 1/16 Cor. Scribed
E 1/16 S5BT.

S 1/4 COR. SEC. 32, T24S, R8W. SET:

2"x3' iron pipe 2 feet in the ground with a brass cap
stamped S 1/4 S 32.

Referenced by:

12" Fir N 50°30' E 56.1 feet, "W" nail, W. Co. Tag reads:
Sec. 32, T24S, R8W, 56.1 feet S50°30'W to S 1/4 Cor.
Scribed 1/4 S32 BT.

72" Fir N 30°W 70.3 feet, "W" nail, W. Co. Tag reads:
Sec. 32, T24S, R8W, 70.3 feet S30°E to S 1/4 Cor. Scribed
1/4 S 32 BT.

N 1/4 COR. SEC. 5, T25S, R8W. SET:

2"x3' iron pipe one foot in the ground with a brass cap
stamped, N 1/4 S5. Pipe is mounded with rocks.

Referenced by:

50" Fir S42°E 26.2 feet; "W" nail, W. Co. Tag reads:
Sec. 5, T25S, R8W, 26.2 feet N42°W to N 1/4 Cor. Scribed
1/4 S 5 BT.

24" Fir S21°W 40.8 feet; "W" nail, W. Co. Tag reads:
Sec. 5, T25S, R8W, 40.8 feet N21°E to N 1/4 Cor. Scribed
1/4 S5 BT.

CE 1/16 SEC. 5, T25S, R8W. SET:

2"x3' iron pipe 2 feet in the ground with brass cap stamped
CE 1/16 S5.

Referenced by:

40" Fir N65°E 21.1 feet; "W" nail, W. Co. Tag reads:
Sec. 5, T25S, R8W, 21.1 feet S65°W to CE 1/16 Cor. Scribed
CE 1/16 S5 BT.

8" Fir N57°W 17.4 feet; "W" nail, W. Co. Tag reads:
Sec. 5, T25S, R8W 17.4 feet S57°E to CE 1/16 Cor.

E 1/16 COR. ON SOUTH LINE SEC. 5, T25S, R8W. SET:

2"x3' iron pipe 2 feet in the ground with a brass cap stamped E 1/16 S5.

Referenced by:

12" Madrona N70°30'W 20.6 feet; "W" nail, W. Co. Tag reads: Sec. 5, T25S, R8W, 20.6 feet S70°30' E to E 1/16 Cor.

60" Fir N34°E 11.0 feet; "W" nail, W. Co. Tag reads: Sec. 5, T25S, R8W, 11.0 feet S34°W to E 1/16 Cor. Scribed E 1/16 S5 BT.

STANDARD CORNER OF SEC.'S 31 and 32, T24S, R8W. SET:

2"x3' iron pipe 2 feet in the ground with a brass cap stamped SW S32.

Referenced by:

15" Cedar N74°E 14.4 feet; "W" nail, W. Co. Tag reads: Sec. 32, T24S, R8W, 14.4 feet S74°W to SW Cor. Scribed S 32 BT.

12" Cedar N49°W 19.5 feet; "W" nail, W. Co. Tag reads: Sec. 31, T24S, R8W, 19.5 feet S49°E to SW Cor. Scribed S 31 BT.

#88 T25S-8 ✓
#89 T24S-8 ✓

The land parcel marked as described in this survey is the East 1/2 East 1/2 of Sec. 5, T25S, R8W, W.M. This parcel belonging to the Bureau of Land Management. Also marked was the Township line between Sec. 5, T25S, R8W and Sec. 32, T24S, R8W from the E 1/16 Cor. Sec. 5 and the SW Cor. Sec. 32. Section 32 also belonging to the above mentioned B.L.M.

REGISTERED
PROFESSIONAL
LAND SURVEYOR

Henry R. Reppeto

OREGON
JULY 12, 1953
HENRY R. REPPETO
618