

SURVEY IN SECTION 8, TOWNSHIP 29 SOUTH, RANGE 7 WEST, WILLAMETTE MERIDIAN
Surveyed for Mrs. Chard by Don E. Garrett
June 1975

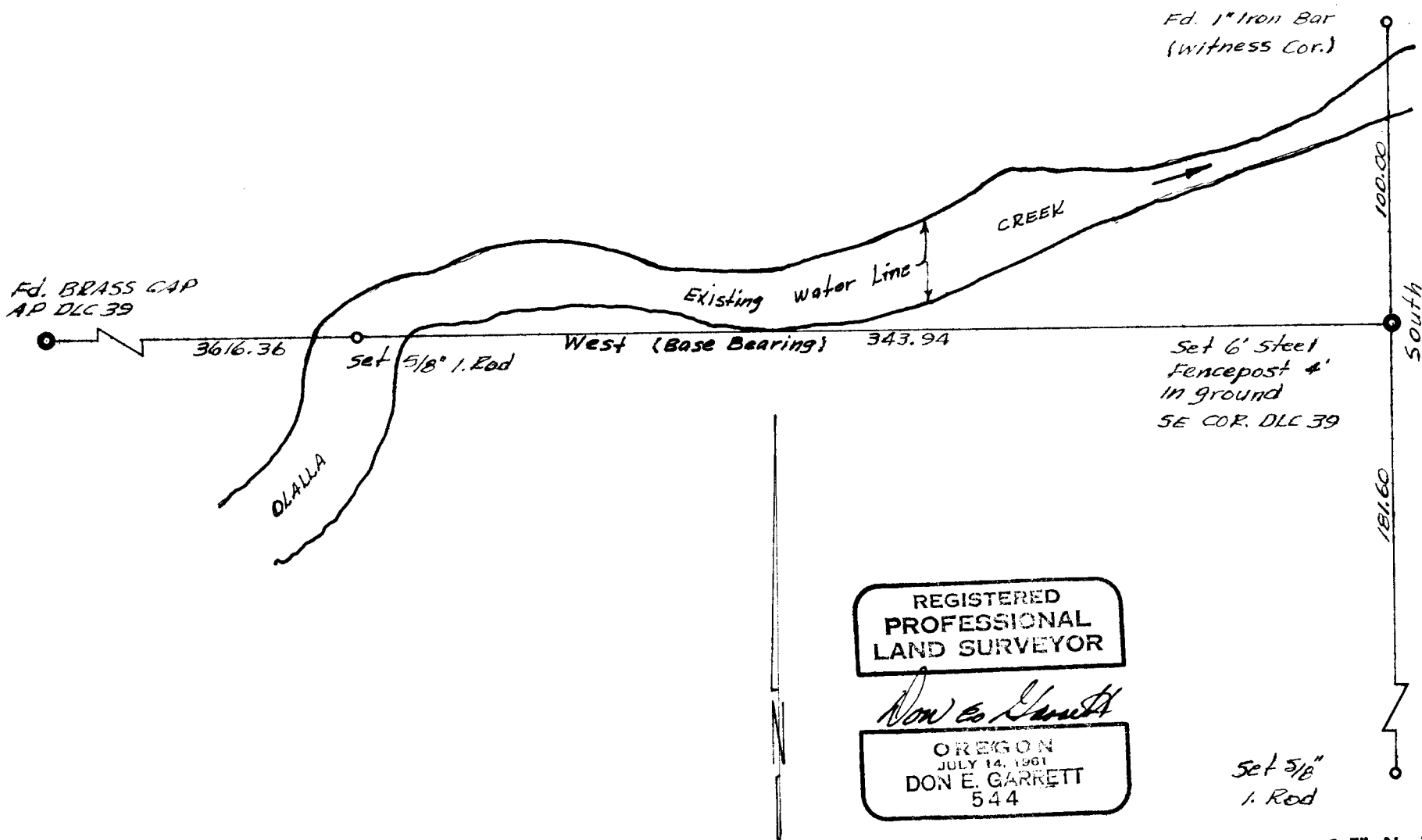
Scale 1" Equals 50'

**COUNTY SURVEYORS FILE DATA
DO NOT REMOVE FROM OFFICE**

FILED ✓
RECEIVED *pp.*

JUN 25 1975

COUNTY SURVEYOR
DOUGLAS COUNTY, ORE.
✓



REGISTERED
PROFESSIONAL
LAND SURVEYOR

Don E. Garrett

OREGON
JULY 14, 1961
DON E. GARRETT
544

C. S. File No. 58/41-3