

SURVEY IN SECTION 29, TOWNSHIP 29 SOUTH, RANGE 4 WEST, WIL. MER.
 Surveyed for Floyd Laughrun by Don E. Garrett
 April, 1975

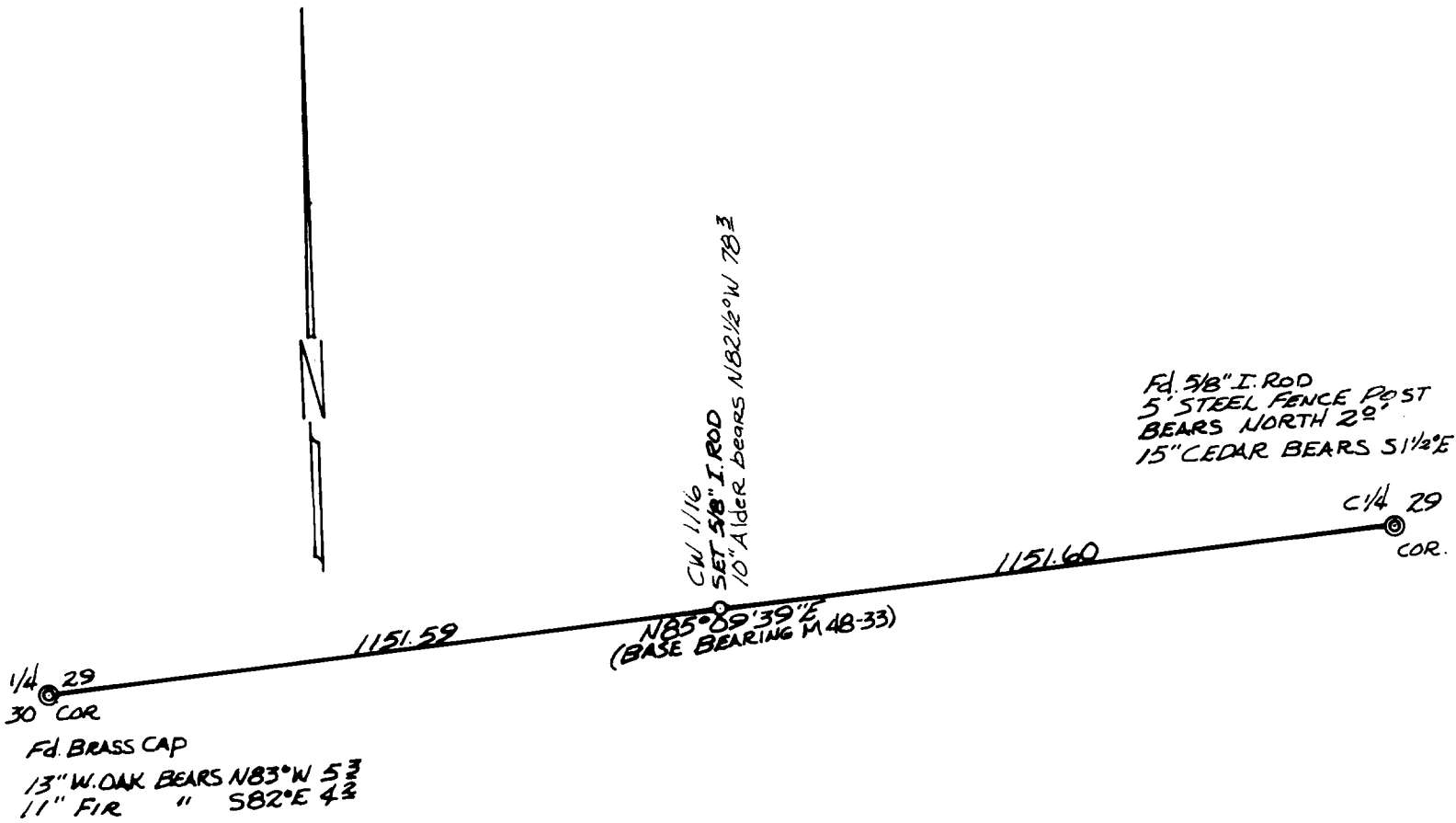
Scale 1" = 300'

**COUNTY SURVEYORS FILE DATA
 DO NOT REMOVE FROM OFFICE**

FILED ✓
 RECEIVED *pe*

APR 25 1975

COUNTY SURVEYOR
 DOUGLAS COUNTY, ORE.
 ✓



REGISTERED
 PROFESSIONAL
 LAND SURVEYOR

Don E. Garrett

OREGON
 JULY 14, 1961
 DON E. GARRETT,
 544