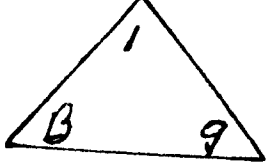
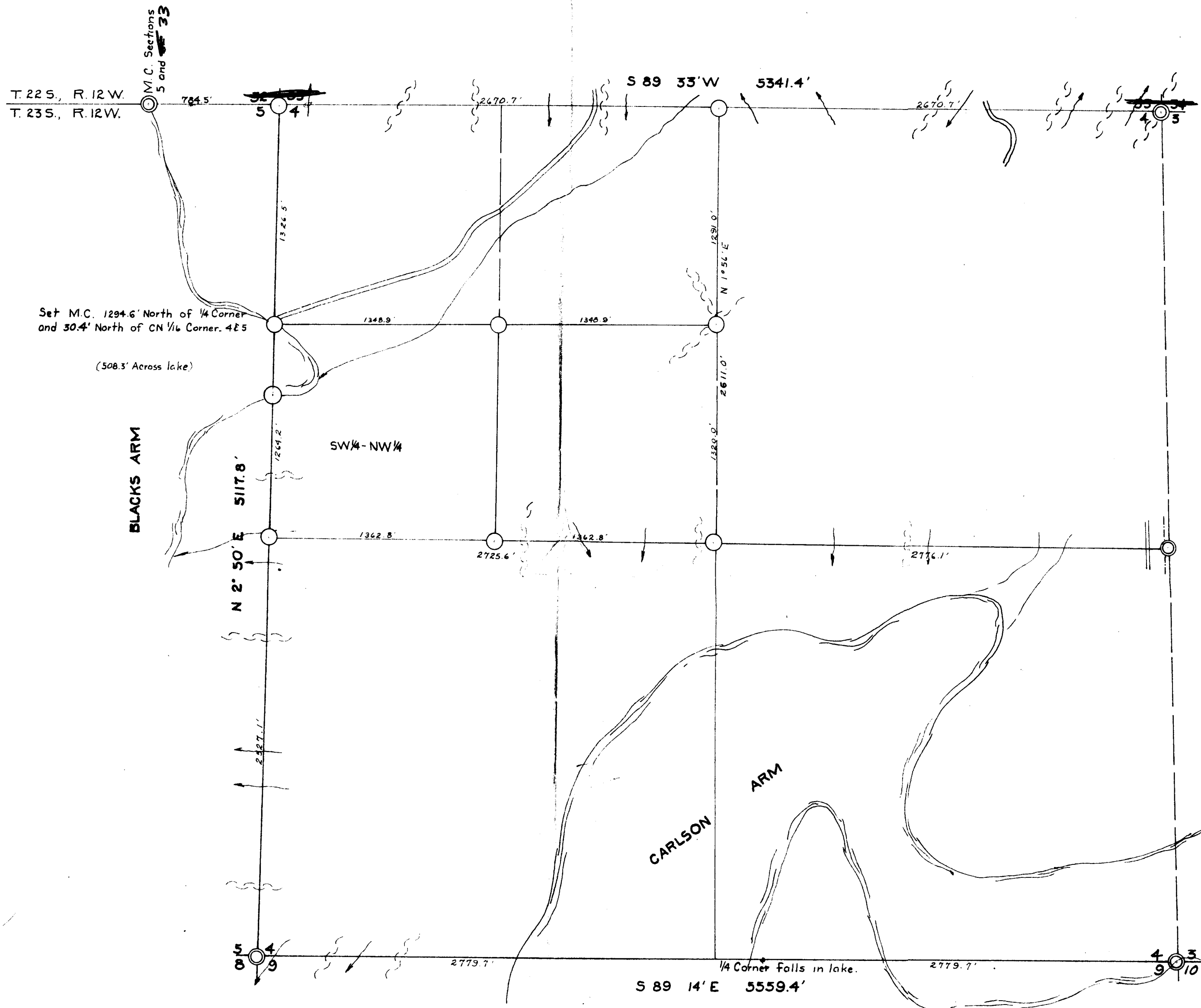


8-121  




SURVEY SUBDIVIDING SECTION 4,  
 T. 23 S., R. 12 W., W.M.,  
 COOS COUNTY, OREGON  
 for  
 GEORGE AND CLARA UHL

Scale: 1" = 500'                      October 22, 1959

Corners found: ●  
 Corners set: ○  
 Lines run: \_\_\_\_\_  
 Lines not run: \_\_\_\_\_

REGISTERED  
 OREGON  
 LAND SURVEYOR  
*Warren G. Hootman*  
 MAY 10, 1957  
 WARREN G. HOOTMAN  
 399

FILED  
*J. P. Lamm*

Survey of the Section Line Common to Sections 4, T. 23 S., R. 12 W.,  
and Section 33, T. 22 S., R. 12 W., T. 2., Coos County, Oregon.

I start my survey at the Northeast Corner of Section 4, T. 23 S., R.  
12 W., W.M., said point being an iron pipe witnessed by three of the  
original bearing trees.

I run Westerly on a random line between Section 4, T. 23 S., R. 12  
W., and Section 33, T. 22 S., R. 12 W., as follows:

- from the corner I ascend
- 21.0 ft. Top of spur, NE, descend
- 160.0 Creek, flows NE, ascend
- 361.0 Top of spur NE, descend
- 550.0 Draw, NE, descend
- 770.0 Top of spur, continue ascent along south slope
- 980.0 Descend
- 1020.0 Road to camp Master Seal
- 1240.0 Ascend
- 1390.0 Top of ridge, SW, divide between Blacks and Carlson  
Arm, descend
- 2240.0 Draw, NW
- 2490.0 Draw, NW
- 2640.0 I make a search for the  $\frac{1}{2}$  Corner ~~Common~~ to Sections 4  
and 33 but cannot verify any evidence of the original  
corner; descend
- 2890.0 Creek flows S 55° 00' W., ascend.
- 3100.0 Descend
- 3240.0 Creek South, ascend
- 3283.0 Top of Spur, south
- 3410.0 Access road to Uhl Ranch

FILED

1959

Coos COUNTY SURVEYOR

THIS ALSO IN  
C. S. 5/55 -

3715.0 ft. Draw, South  
 4130.0 Spur South, descend.  
 4350.0 Ascend  
 4627.0 Ridge-SW., descend  
 5170.0 Ascend  
 5280.0 I make a search for the Corner common to Sections 4, 5, ~~22~~, and ~~23~~ but find no trace of it at this time. I continue West, ascending.  
 5360.0 Descend  
 6125.90 I am 47.8' North of the Meander Corner between Sections 5 and ~~22~~ <sup>33</sup> I find both witness trees are now stumps. The faces show no scribing but fit for size, distance and bearing. I place the corner point from these trees.

Then, I return along the true line and set the section corner common to Sections ~~32 and 33~~, T. 22 S., R. 12 W., and Sections 4, and 5, T. 23 S., R. 12 W., by single proportion at 41.8' South of Station 5341.4, and set a 3" post and mark the following Bearing Trees:

9" Douglas fir, bears S 81° 00' E., 14.8 ft.  
 6" Douglas fir, bears S 26° 00' W., 11.1 ft.  
 8" Douglas fir, bears N 65° 00' W., 2.0 ft.  
 16" Alder, bears N 18° 15' E., 14.0 ft.

I, then, set a 4" post for the  $\frac{1}{4}$  Corner ~~Common~~ to Sections 4, and ~~22~~, 20.9 ft. South of Station 2670.7 and mark a

48" Cedar, bears N 85° 00' W., 18.5 ft.  
 33" Cedar, bears S 83° 30' W., 43.8 ft.

END OF REPORT

Warren D. Hootman

*Warren D. Hootman*  
 Oregon Surveyor # 399

MAP

(165)  
 8-12)