

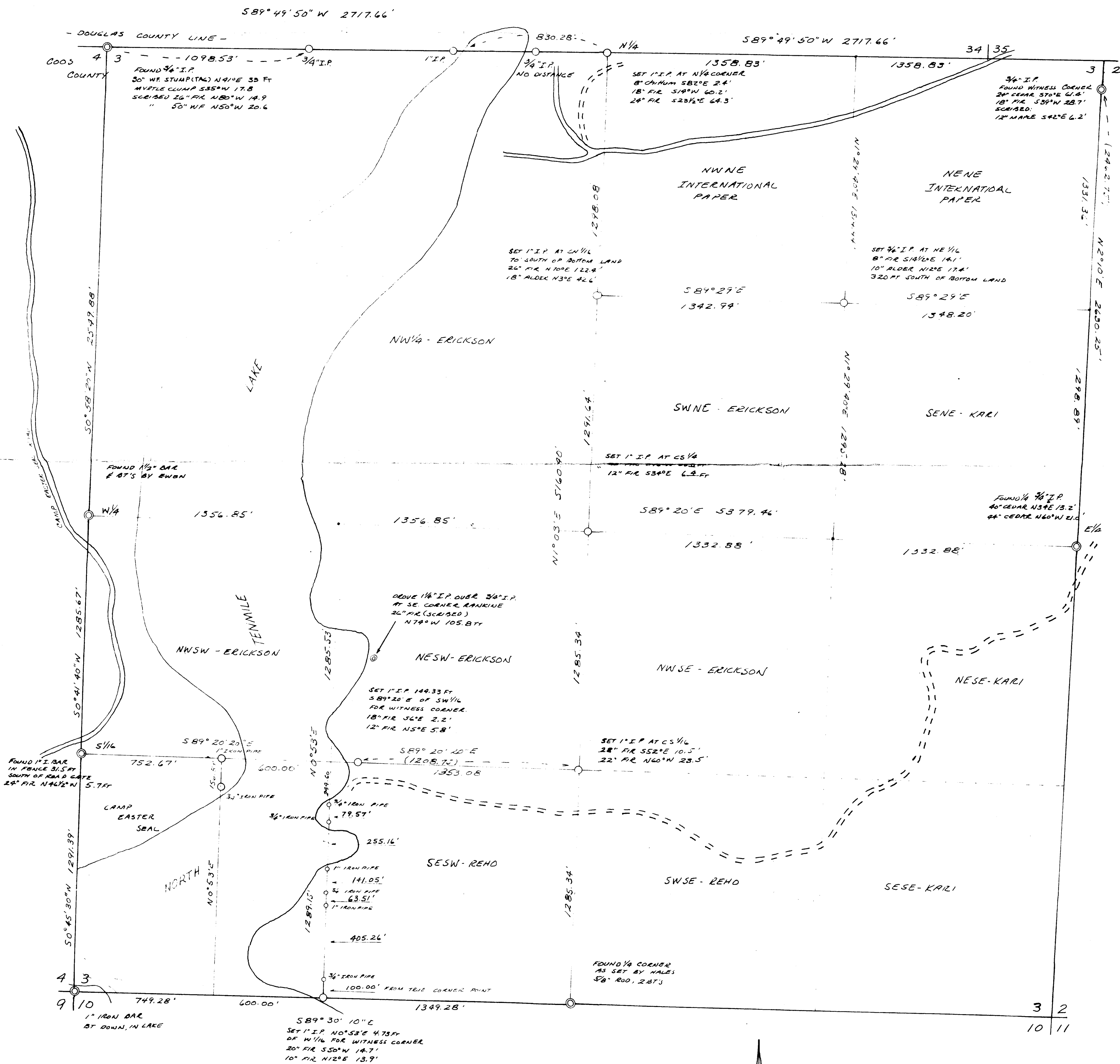
COUNTY SURVEYORS FILE DATA
DO NOT REMOVE FROM OFFICE

SUBDIVISION OF SECTION 3, T. 23 S., R. 12 W., W.M.

COOS COUNTY, OREGON

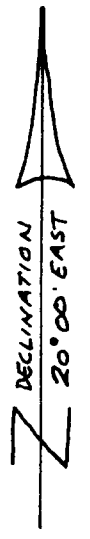
NOVEMBER 12, 1970

SCALE 1" = 300'



SURVEY FOR:
 E. REHO, PORTLAND
 A. PRESSNALL, NORTH LAKE
 C. CLARK, NORTH LAKE
 W. ERICKSON, COOS BAY
 R. RAMBERG, FAIRVIEW

R. E. SPUNTFNER
 ENGINEERING & FORESTRY
 1120 N. BTH
 COOS BAY, OREGON



LEGEND
 CORNERS SET ○
 CORNERS FOUND ⊙
 BEARINGS DETERMINED FROM SOLAR OBSERVATION.