

SURVEY OF WEST LINE OF NW 1/4-SW 1/4 SECTION 35, T.26S.R.3W.W.M.

FOR: MARVIN GIBSON

BY: BAUGHMAN SURVEYING SERVICE

MARCH 1975

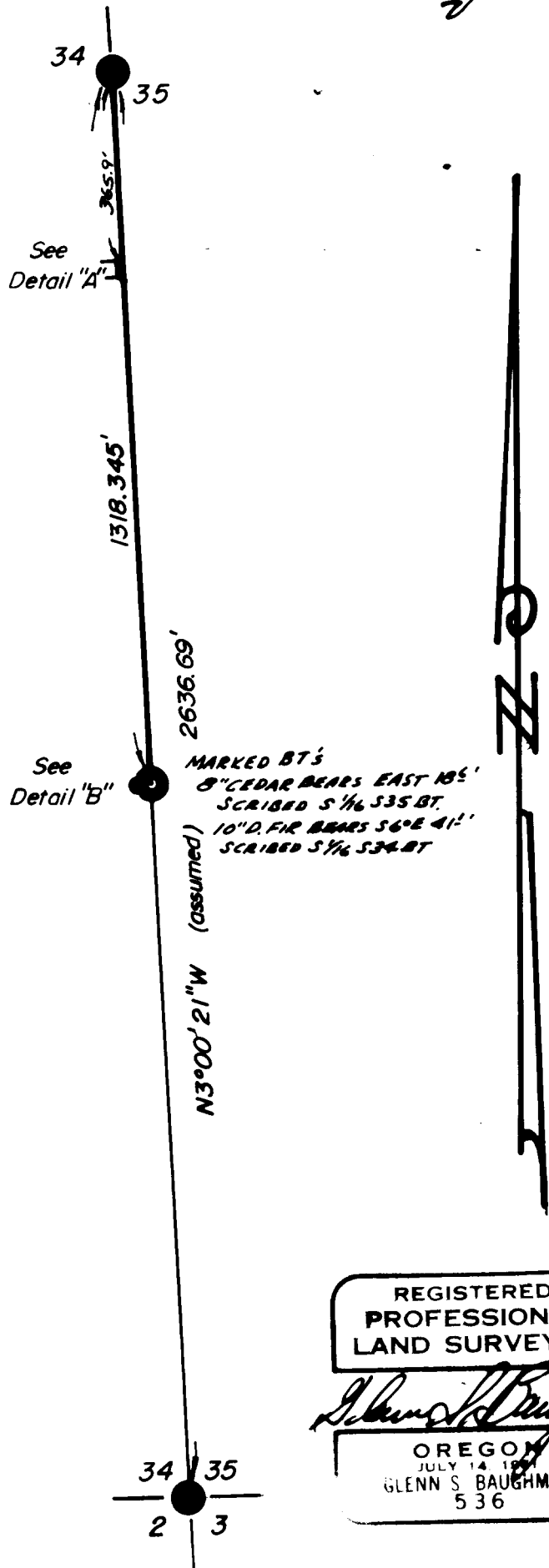
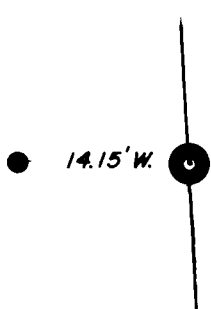
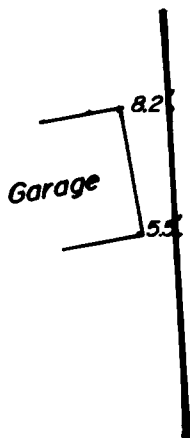
SCALE: 1"=300'

FILED ✓
RECEIVED RR

APR 2 1975

COUNTY SURVEYOR,
DOUGLAS COUNTY, ORE.

COUNTY SURVEYOR'S FILE COPY
DO NOT REMOVE FROM OFFICE



LEGEND

- — Found Brass cap
- — Set Brass cap
- — Found 1/2" iron rod
- Set steel fence posts

REGISTERED
PROFESSIONAL
LAND SURVEYOR

Glenn S. Baughman

OREGON
JULY 14 1975
GLENN S. BAUGHMAN
536