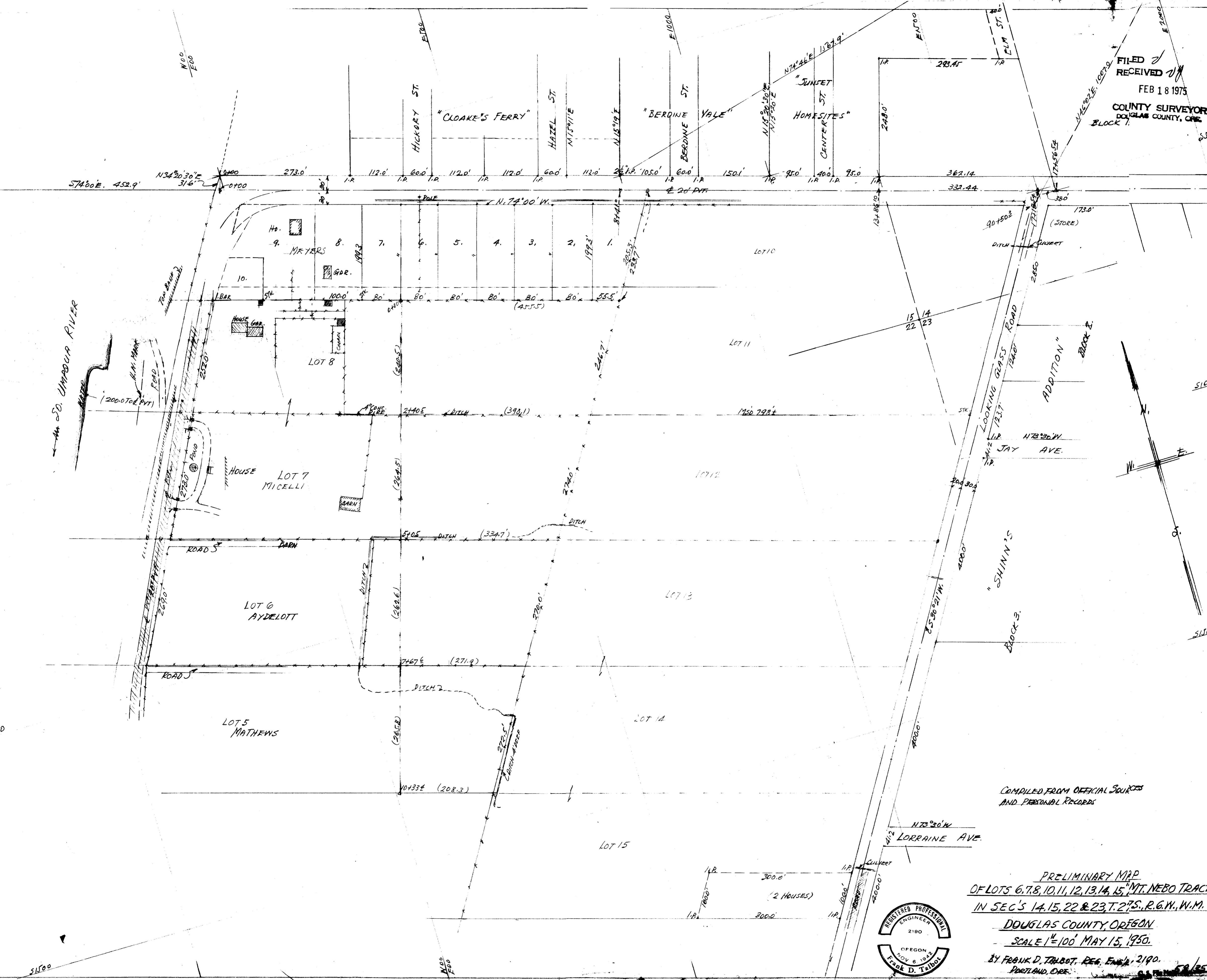


FILED
 RECEIVED
 FEB 18 1975
 COUNTY SURVEYOR
 DOUGLAS COUNTY, OREGON
 BLOCK 1



COMPILED FROM OFFICIAL SOURCES
 AND PERSONAL RECORDS

PRELIMINARY MAP
 OF LOTS 6, 7, 8, 10, 11, 12, 13, 14, 15, MT. NEBO TRACT
 IN SEC'S 14, 15, 22 & 23, T. 27 S., R. 6 W., W. 1/4 M.

DOUGLAS COUNTY, OREGON
 SCALE 1" = 100' MAY 15, 1950.

BY FRANK D. TALBOT, REG. ENGR. 2190.
 PORTLAND, ORE.

