

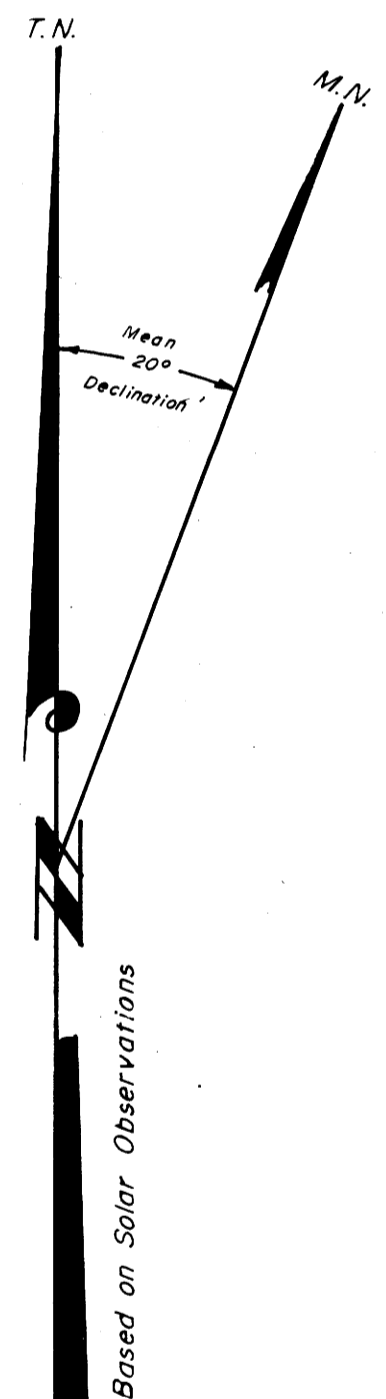
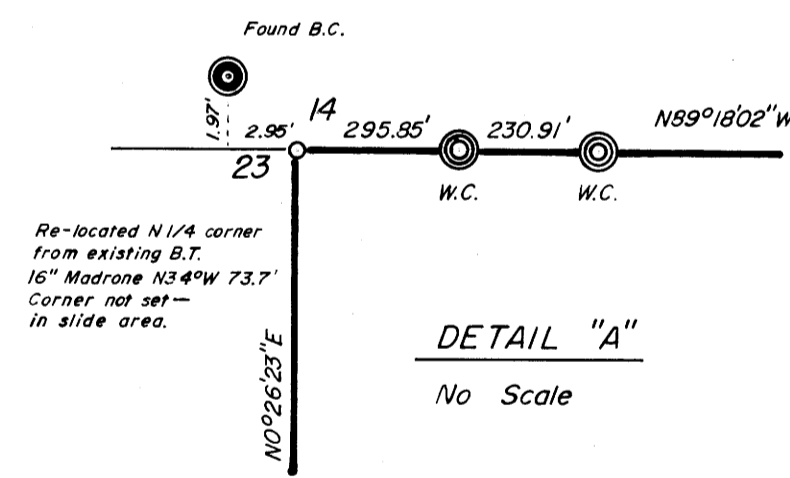
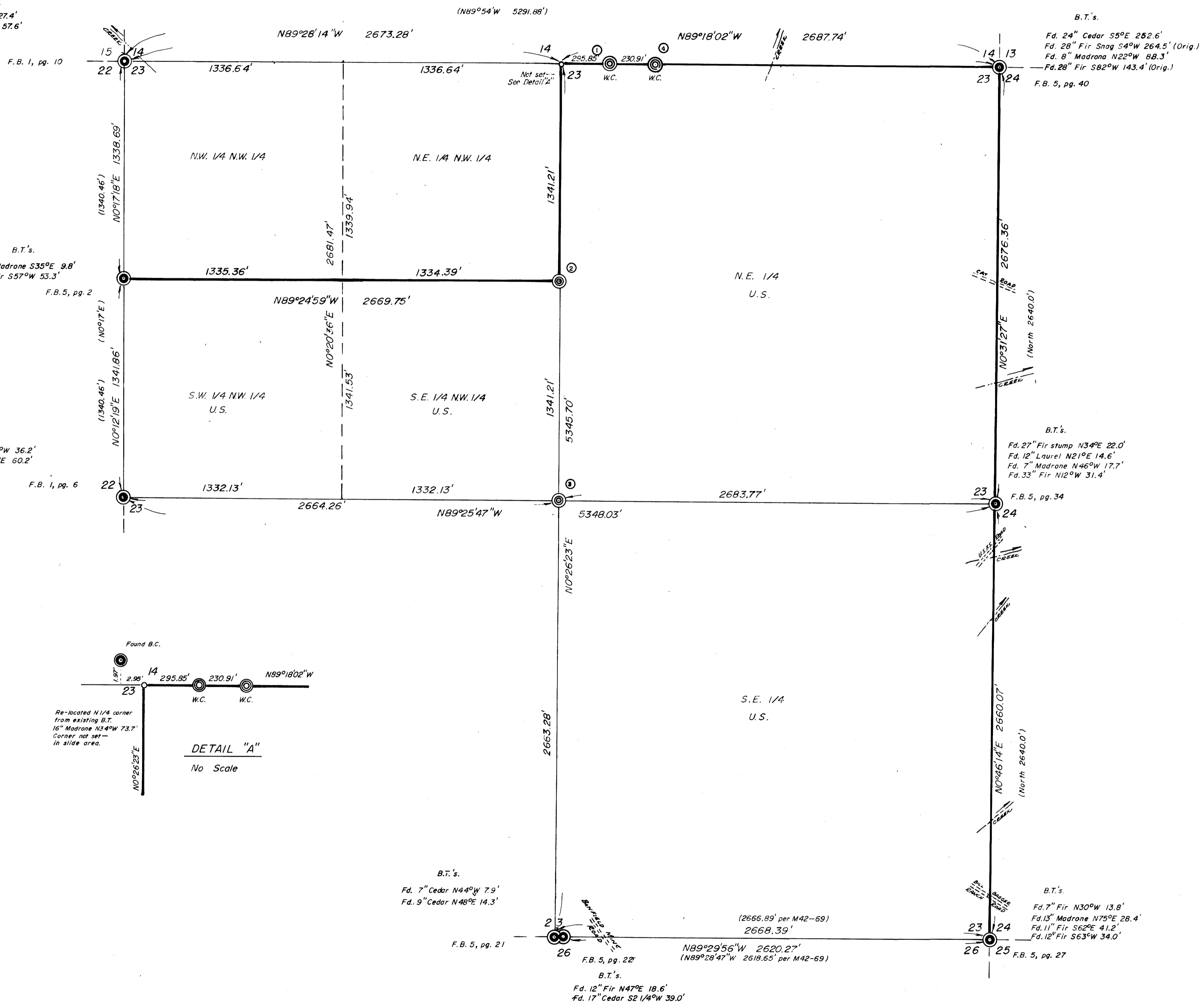
**SURVEY FOR U.S. FOREST SERVICE
IN SECTION 23, T.31S. R.2W.W.M., DOUGLAS COUNTY, OREGON
BY: BAUGHMAN SURVEYING SERVICE, ROSEBURG, OREGON**

JANUARY 1975

SCALE: 1" = 400'

FILED
RECEIVED
FEB 1975
COUNTY SURVEYOR
TILLER, OREGON

B.T.'s.
Fd. 10" Cedar N2°E 27.4'
Fd. 12" Cedar S34°W 57.6'



I, GLENN S. BAUGHMAN, a registered professional land surveyor in the State of Oregon, hereby certify that this plat and the notes hereon, or attached, are a correct representation of a survey I performed during October thru December 1974 and January 1975, for the U.S. Forest Service, in accordance with the statutes of the State of Oregon and with the Articles of my contract.

Glenn S. Baughman

Glenn S. Baughman
GLENN S. BAUGHMAN

LEGEND

- ⊙ — Set Brass cap
- ⊙ — Found Brass cap
- True line posted with steel fence posts and government property signs.
- () — Record Calls
- — See page number as indicated, i.e. 1,2,3,4, — on form no. R6-7100-57 Certified Record of Land Corner Monumentation.

CERTIFIED RECORD OF LAND CORNER MONUMENTATION

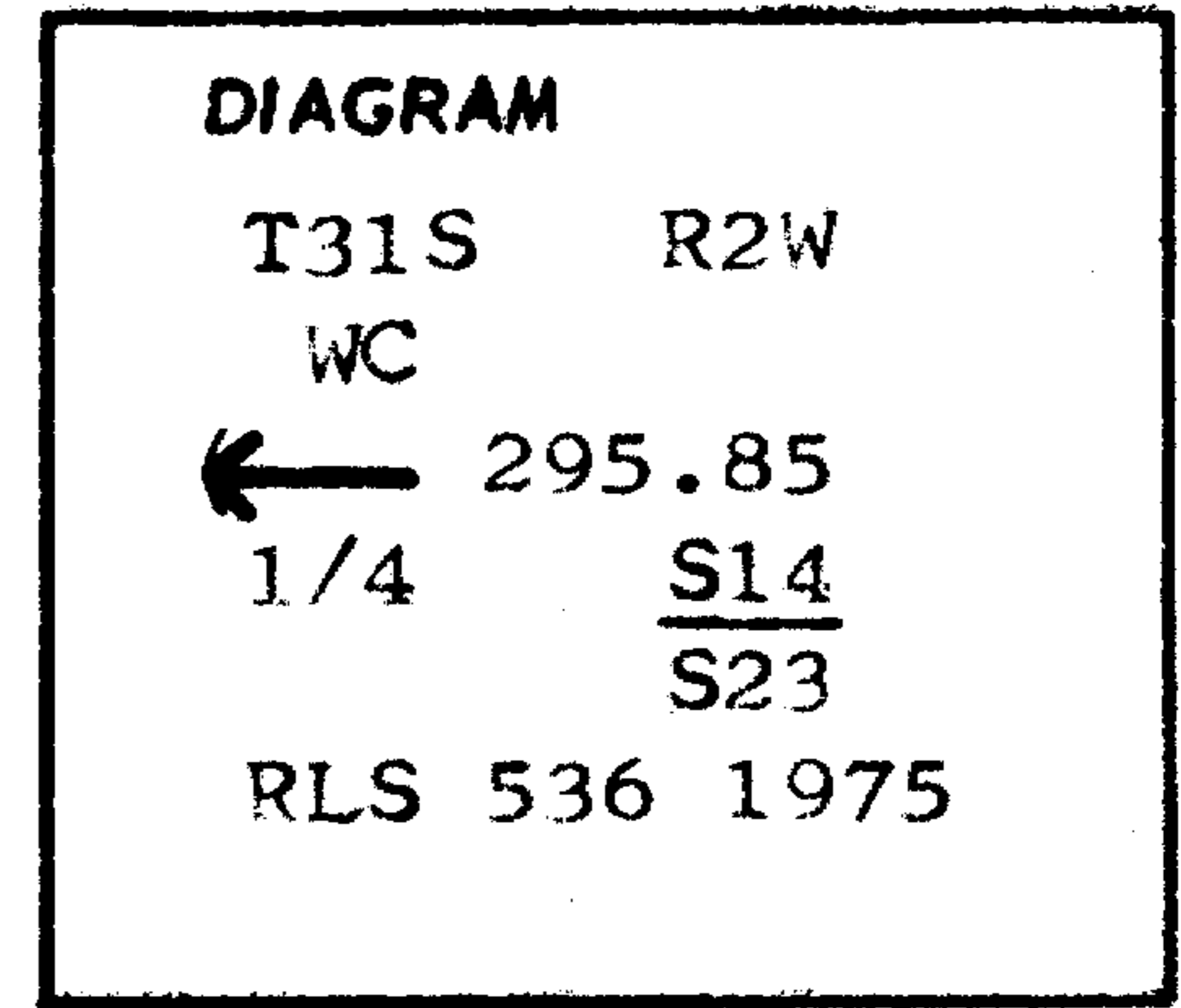
History of original corner establishment:

August 17, 1857

Set 1/4 Section Post at 40.09 chains from N.W. Corner of Section 23.

Bearing trees which bear from corner:

A Fir 8 inches in diameter bears N.88°E. 9 lks.
A Pine 30 inches in diameter bears S.50°E. 24 lks.



Description of corner evidence found:

I find 1 inch galvanized iron pipe with Brass Cap set 8 inches above ground.
CAP STAMPED

BEARING TREES:

16 inch Madrone bears N.34°W. 73.7 ft. (1/4 CS BT) visible. 1/4 S14
Original 15 inch Fir Stump East 6.5 ft. (B) visible. S23
Original 48 inch Pine Stump S.38E. 17.5 ft. (B.T.) visible. County Surveyors
16 inch Ash bears S12E. 48.6 ft. (S23 CS BT) visible. Office 1966.

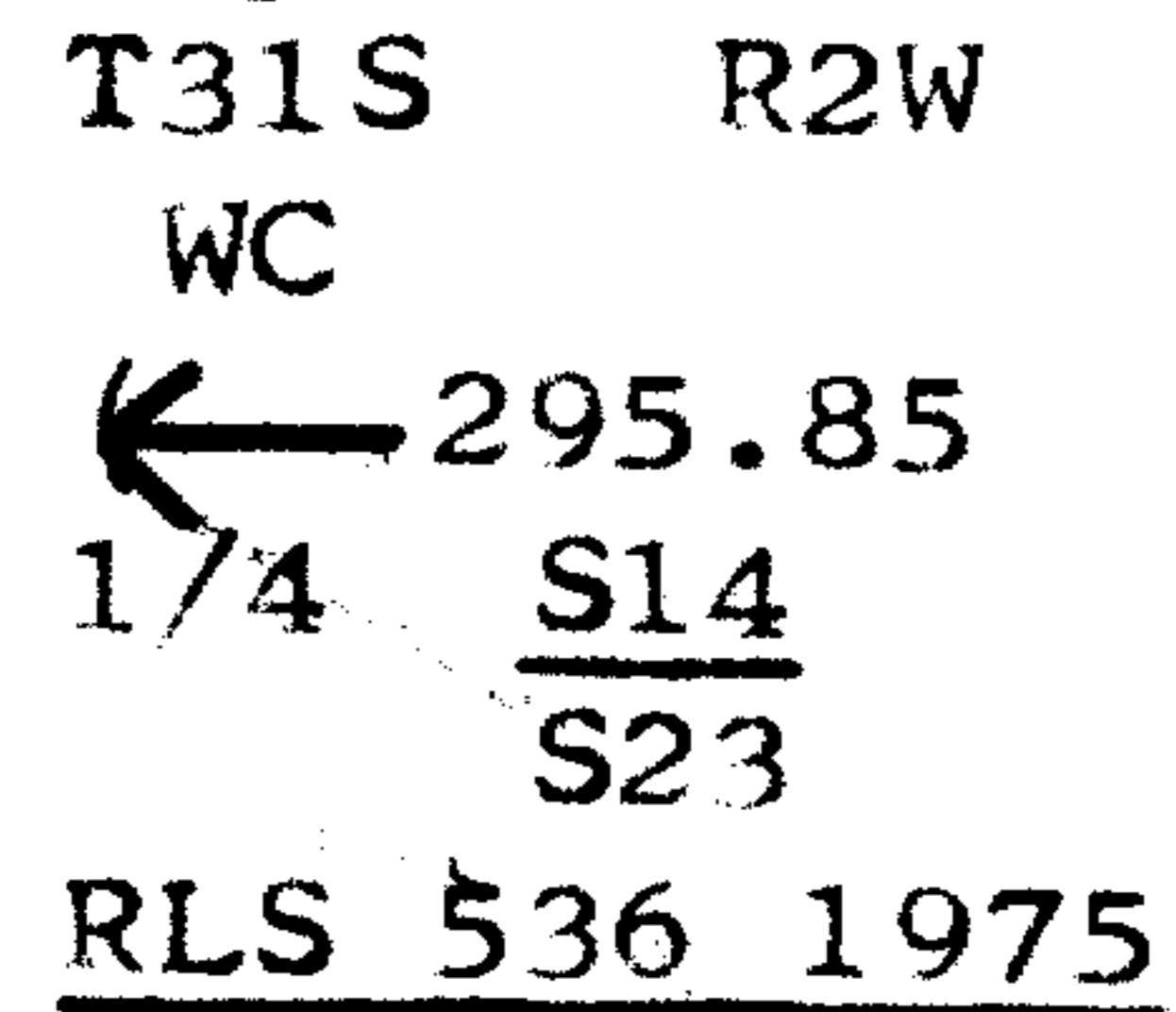
I find Corner lies in active slide area. I used single proportion method and Corner moved downhill; which is impractical. I then established the true position (leaving the County Surveyors Corner out of position) by using call distance and bearing from 16 inch Madrone, which lies outside the recent slide area. By this method the new Corner position moves S.56°13'43"E. 3.55 feet from County Surveyors Corner. I then established Witness Corners on the North line of Section 23 to the East.

Description of monument and accessories I established to perpetuate the original location of this corner

I set a 30 inch long, 2 1/2 inch diameter galvanized iron pipe 26 inches in the ground, in a mound of stones, with a 3 inch Brass Cap marked:

BEARING TREES:

An Oak 14 inches in diameter bears N.10° W.71.4 feet scribed WC 1/4 S14 (BT) with a brass washer stamped LS 536 nailed at base.



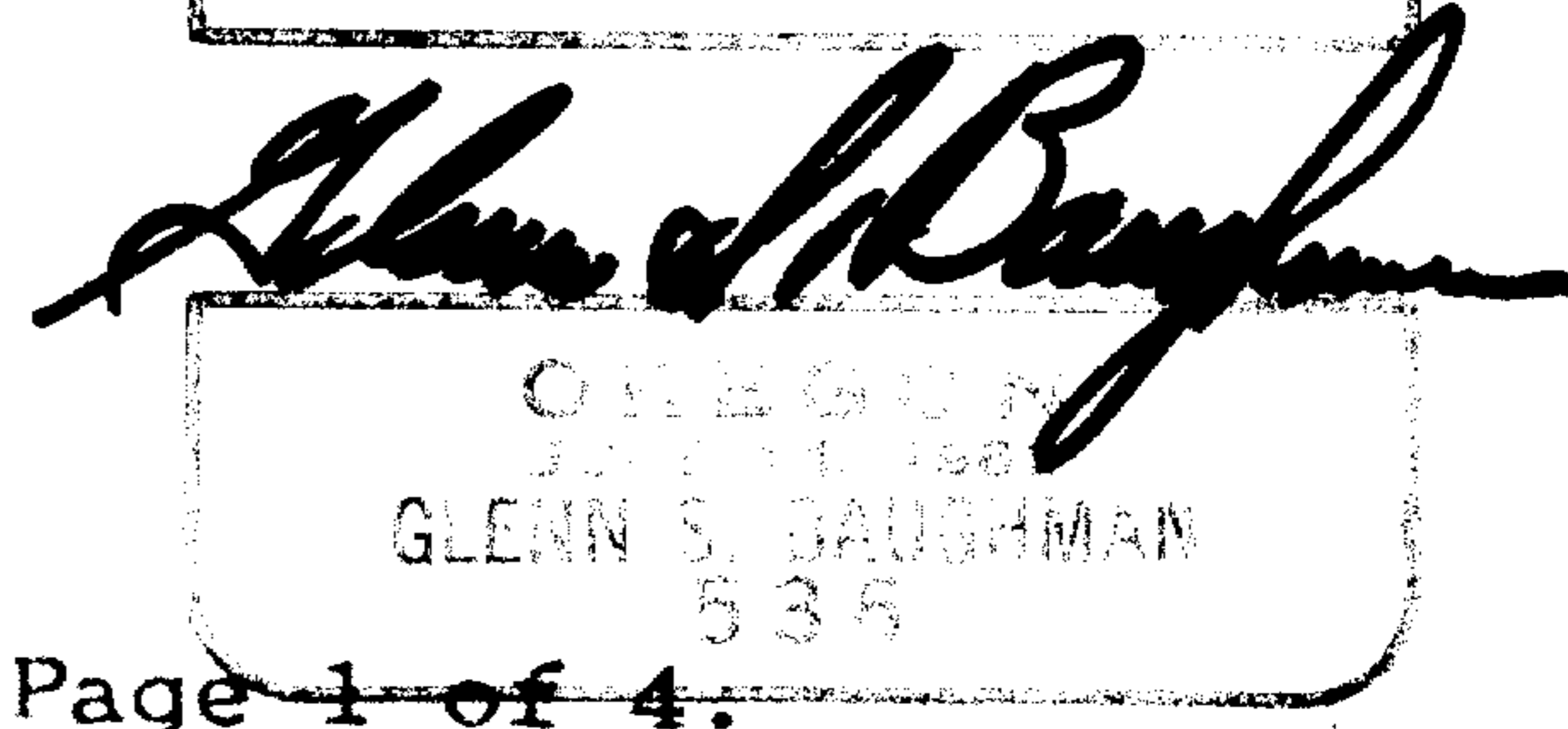
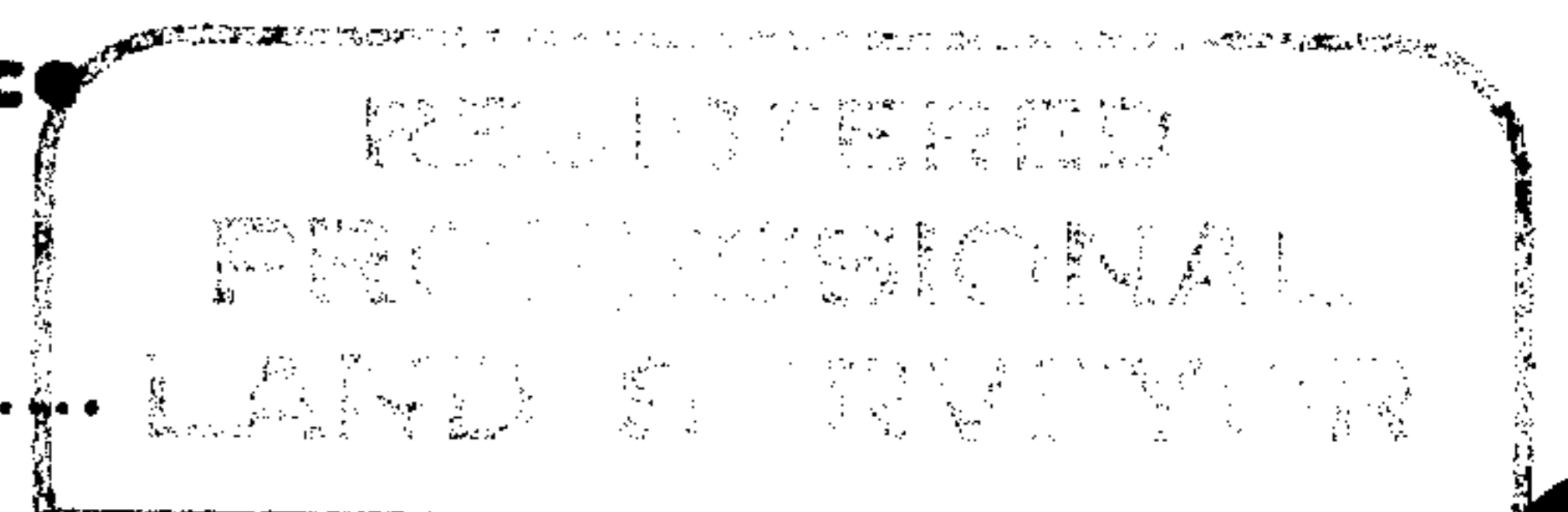
A Madrone 12 inches in Diameter bears S.32°30'E. 135.6 feet scribed WC 1/4 S23 (BT) with a brass washer nailed at base marked: LS 536.

NOTE:

Corner lies 1 foot South of East-West fence in logged over unit.

From Book #5, page 50, Tiller Land Survey #14 - Contract #004610N.

Office of Surveyor County of Douglas
State of Oregon, I hereby certify that the within instrument was filed in this office for record on the 5th day of February
Thomas P. Baggett by Virginia A. Yates
(COUNTY OFFICIAL) (DEPUTY)



#153 ✓

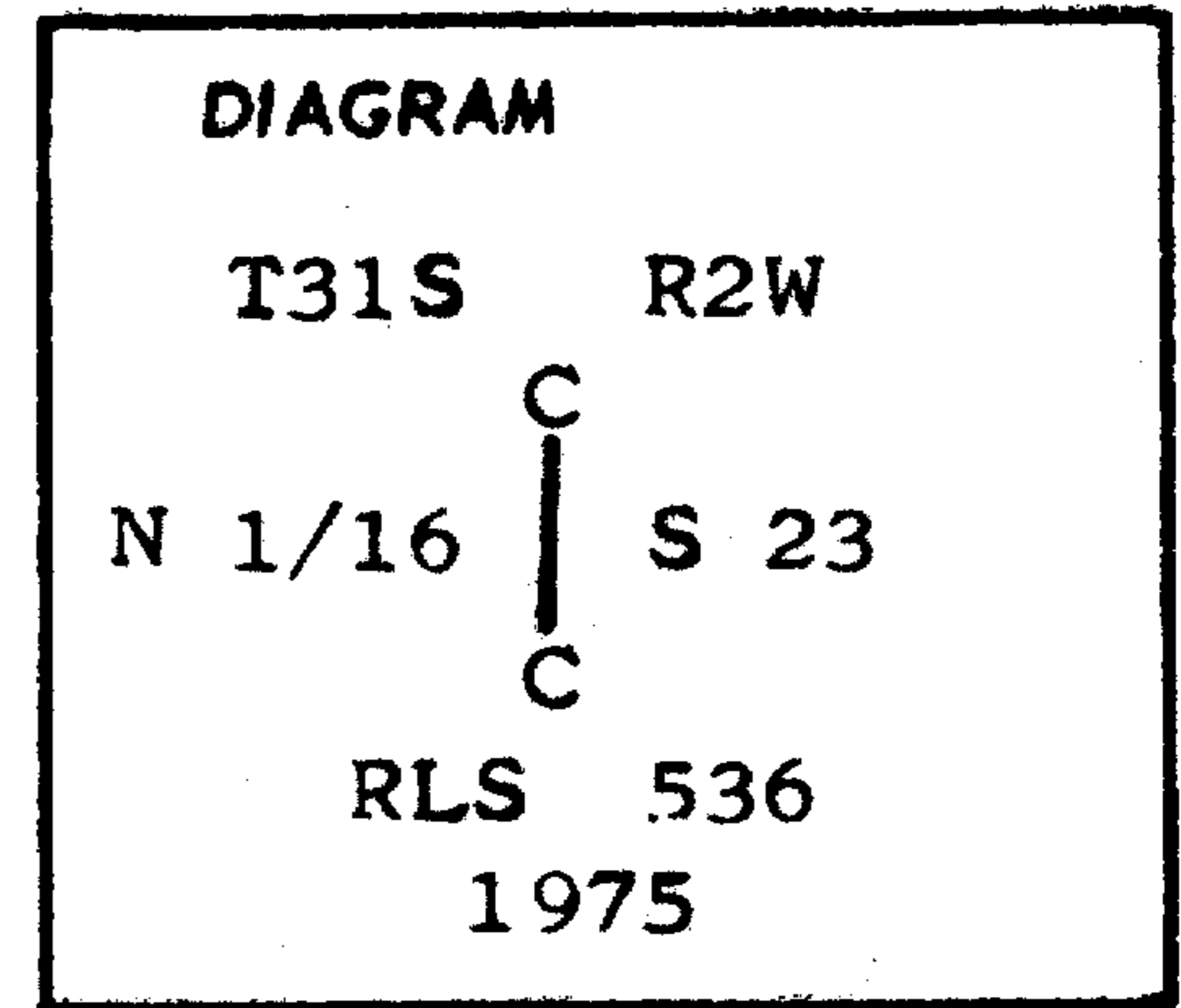
MS6-5

C

CERTIFIED RECORD OF LAND CORNER MONUMENTATION

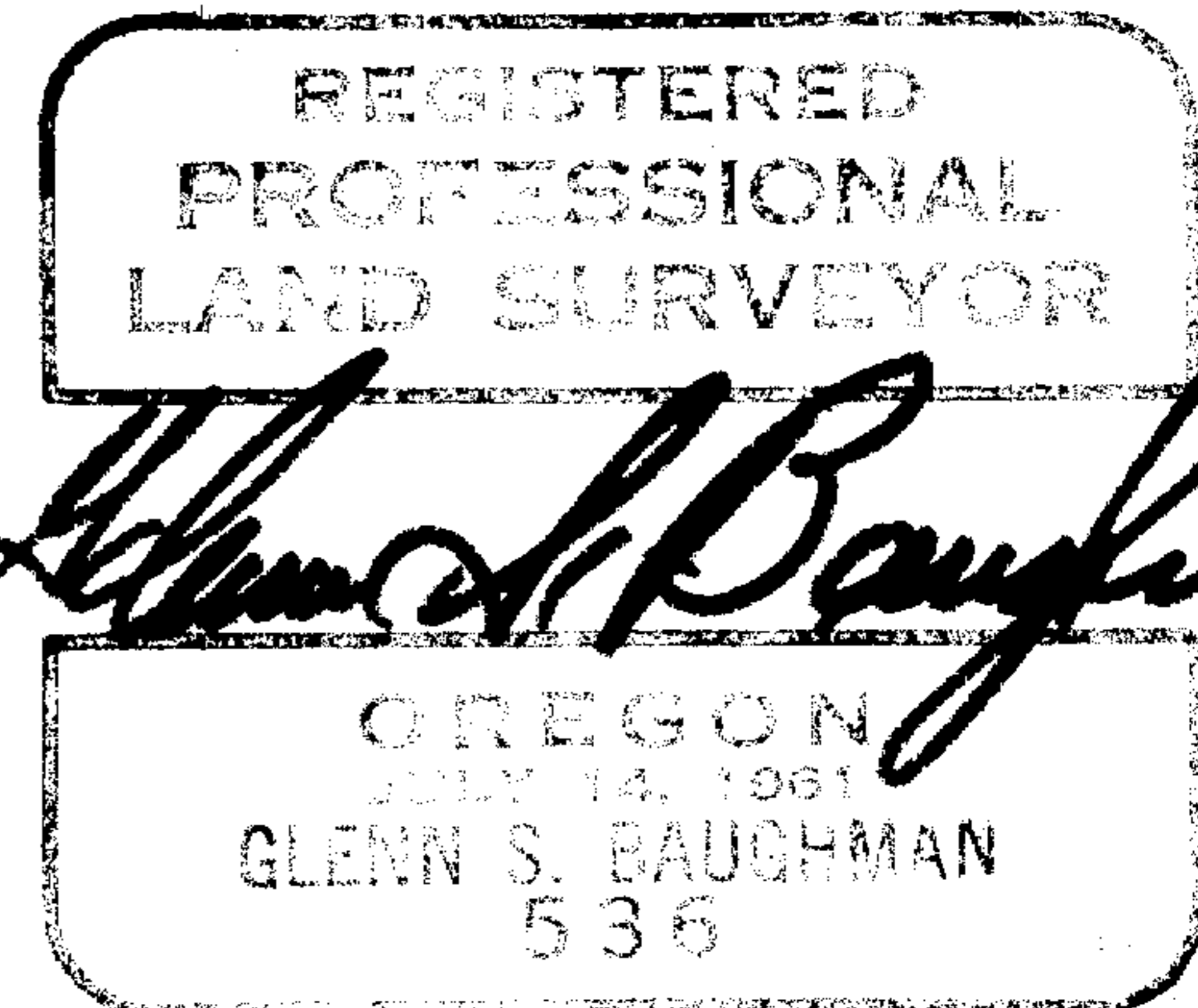
History of original corner establishment:

NONE



Description of corner evidence found:

NONE



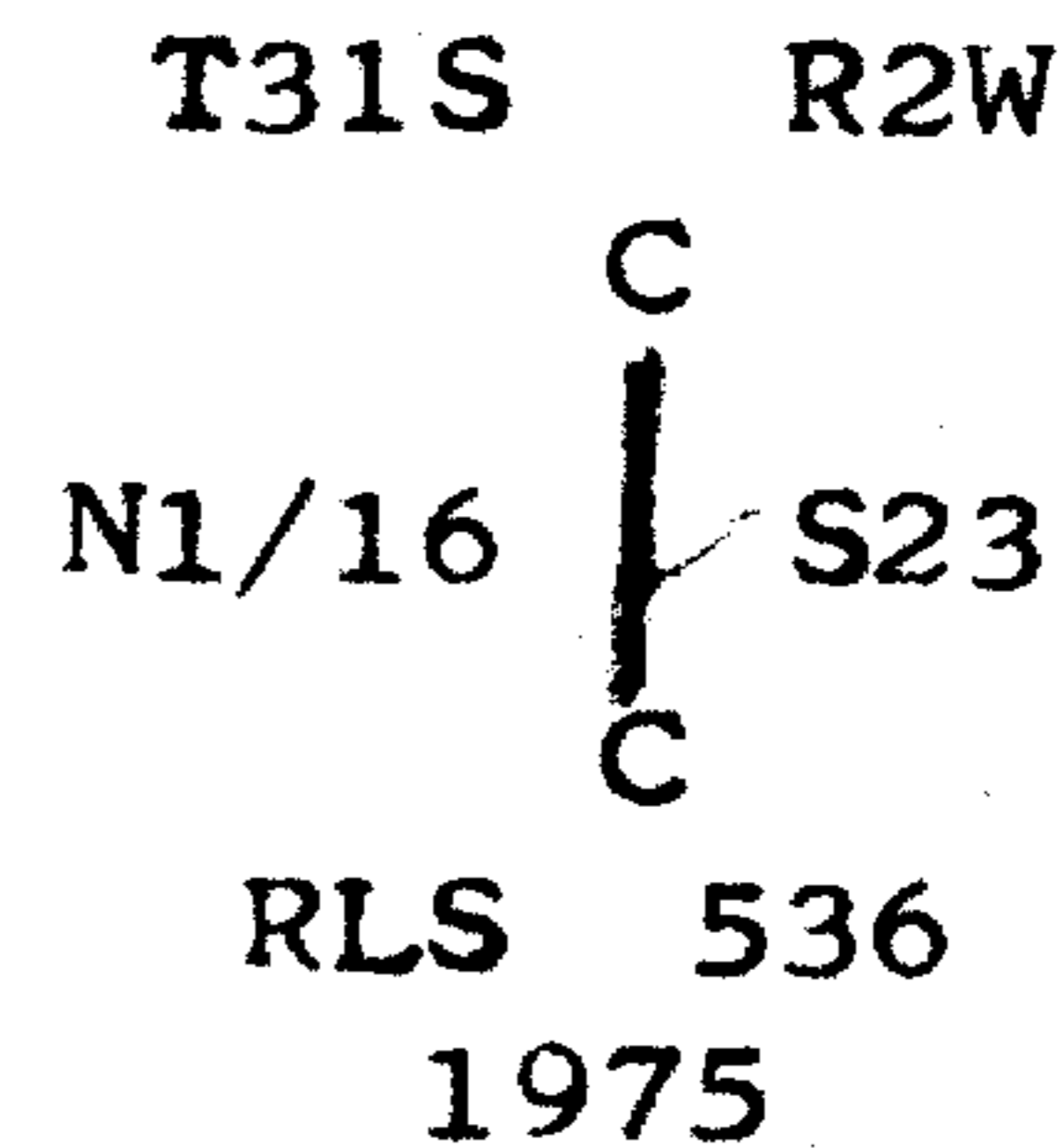
Description of monument and accessories I established to perpetuate the original location of this corner

I set a 30-inch long, 2 1/2 inch diameter galvanized iron pipe 25 inches in the ground, in a mound of stones, with a 3-inch brass cap marked:

Bearing trees:

A Cedar, 12 inches diameter bears S 21° E
41.4 feet scribed N1/16 S23 (BT) with a
brass washer stamped RLS 536 nailed at base.

A Madrone, 11 inches diameter bears S 74° W
73.7 feet scribed N1/16 S23 (BT) with a
brass washer stamped RLS 536 nailed at base.



NOTE: This corner is at top of ridge where East-West and North-South ridges meet approx. 18 feet East of North fence line. Also approx. 80 feet North of East-West timber line.

From Book #5, page 51, Tiller Land Survey #14 - Contract #004610N.

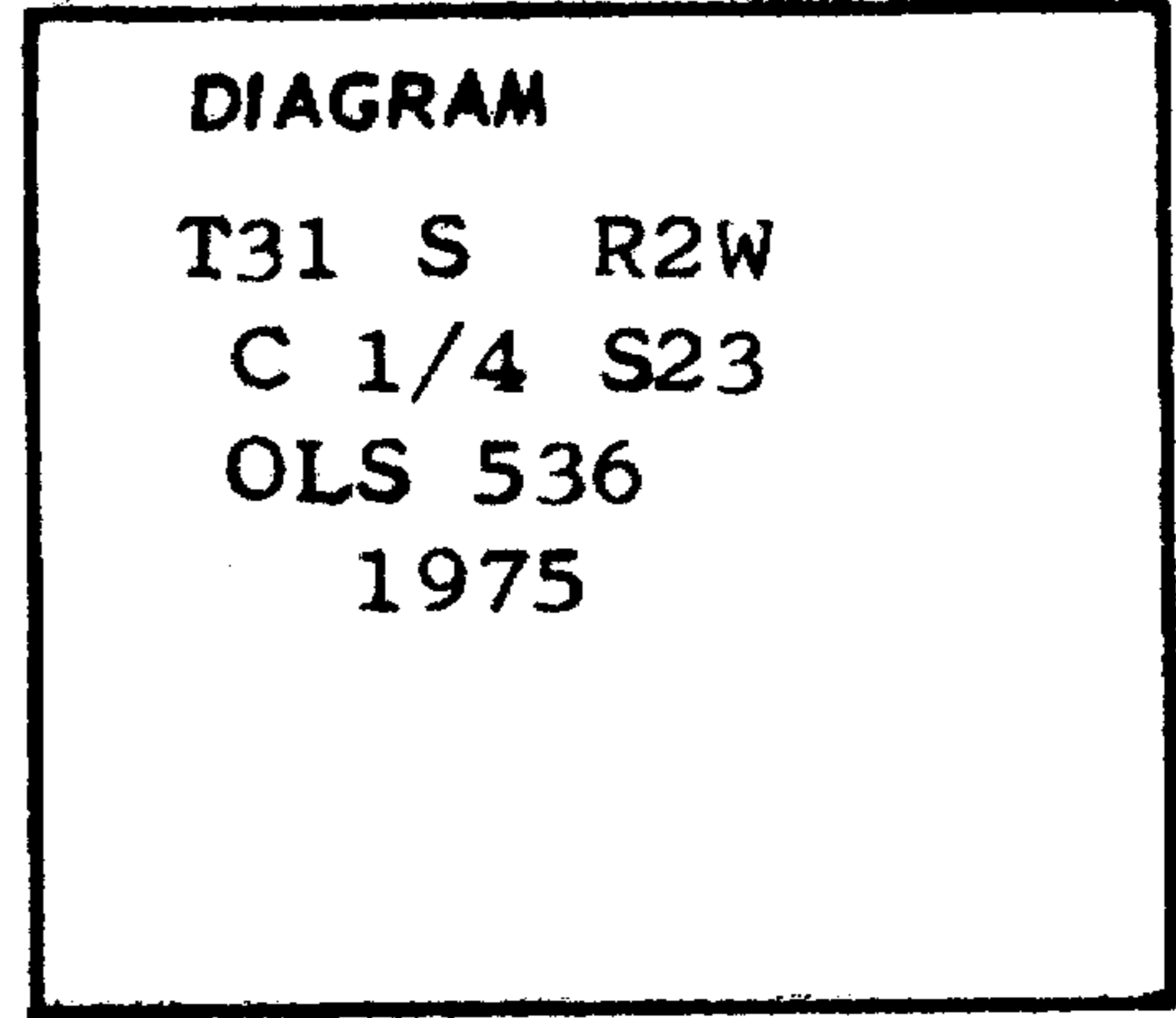
Office of Surveyor County of Douglas
 State of Oregon , I hereby certify that the within instrument was filed in this office
 for record on the 5th day of February 1975., at 11:30 o'clock A.m., (signed)
Travis P. Engstrom by Virginia A. Hatcher
 (COUNTY OFFICIAL) (DEPUTY)

OK

CERTIFIED RECORD OF LAND CORNER MONUMENTATION

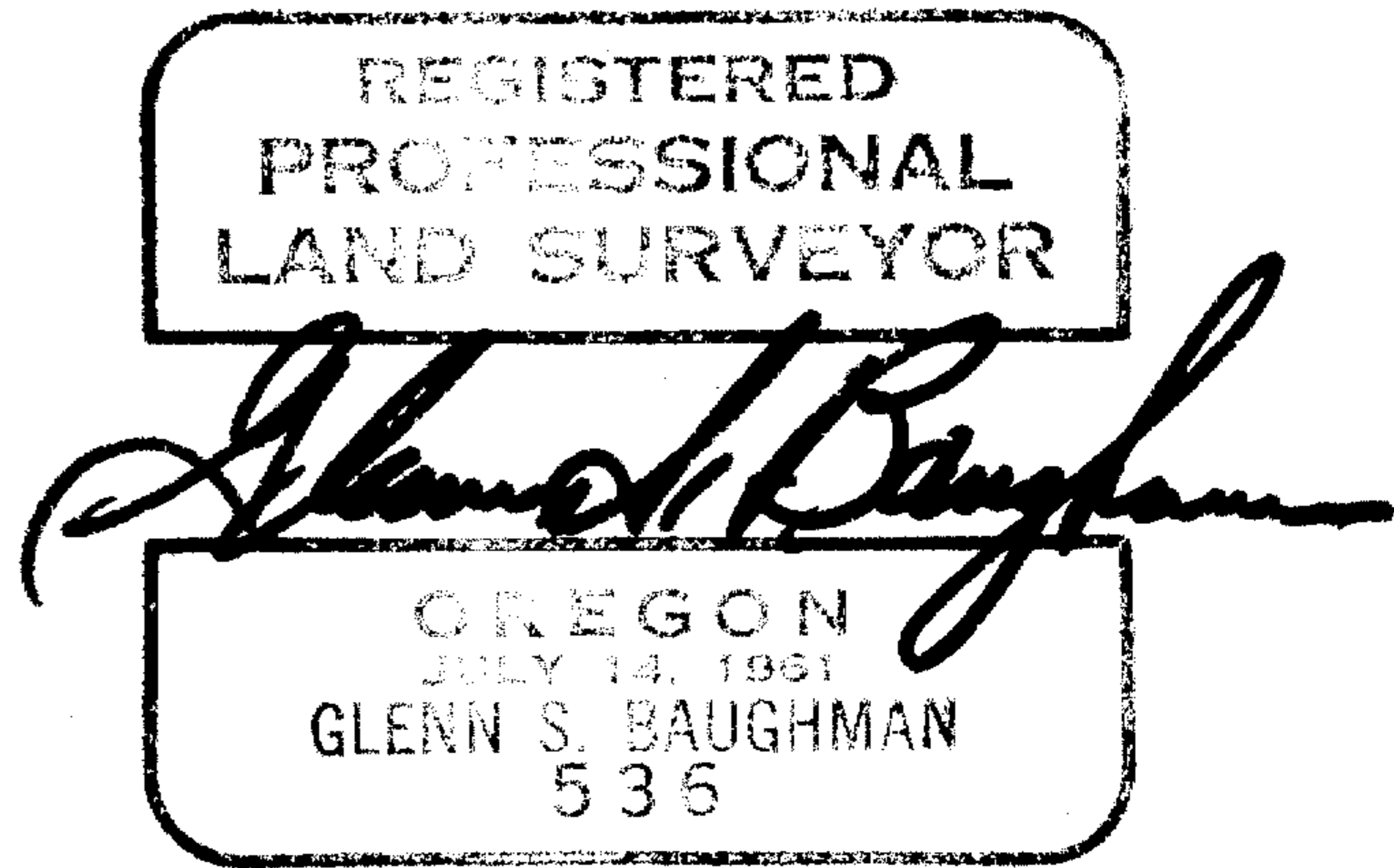
History of original corner establishment:

NONE



Description of corner evidence found:

NONE



Description of monument and accessories I established to perpetuate the original location of this corner

I set a 30-inch long, 2 1/2 inch diameter galvanized iron pipe 26 inches in the ground, in a mound of stones, with a 3-inch brass cap marked:

Bearing trees:

T31S R2W
C1/4 S23
OLS 536
1975

A Cedar, 9 inches diameter bears N 29°30' W 19.5 feet scribed C1/4 S23 (BT) with a brass washer stamped LS 536 nailed at bt.

A Cedar, 8 inches diameter bears N 53° E 28.9 feet scribed C1/4 S23 (BT) with a brass washer stamped LS 536 nailed at BT

NOTE: Both trees have a 6 inch red band painted around tree.

Corner is set between a 36 inch Cedar stump and a 26 inch Fir log, 100 feet South to edge of logged over unit.

From Book #5, page 52, Tiller Land Survey #14 - Contract #004610N.

Office of Surveyor County of Douglas
State of Oregon, I hereby certify that the within instrument was filed in this office for record on the 5th day of February, 1975, at 11:30 o'clock A.m., (signed)
Francis L. Ingram by Virginia A. Yates
(COUNTY OFFICIAL) (DEPUTY)

#152 ✓

C

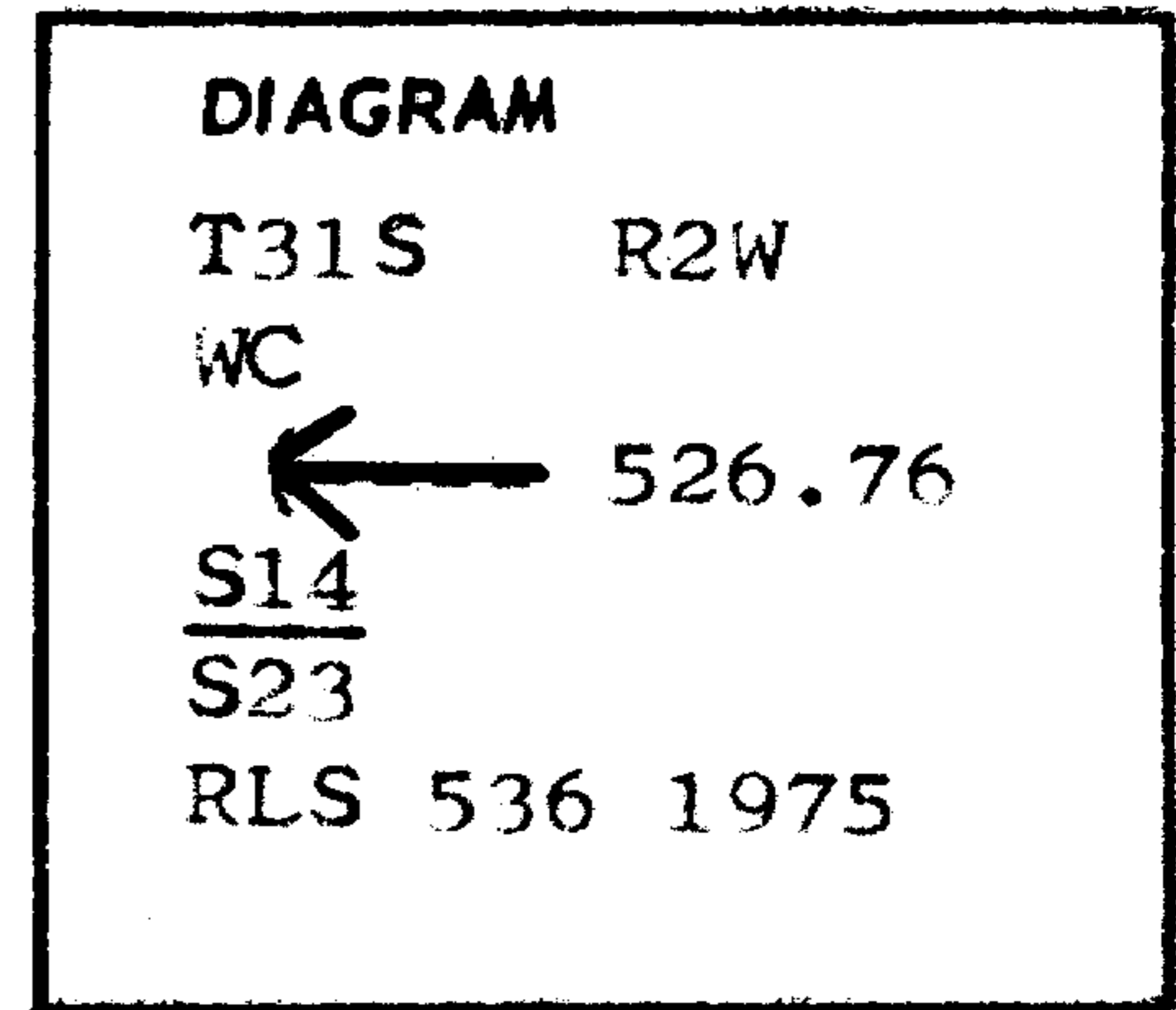
CERTIFIED RECORD OF LAND CORNER MONUMENTATION

History of original corner establishment:

August 17, 1857

Set 1/4 Section Post at 40.09 chains from N.W. Corner of Section 23. Bearing trees which bear from corner:

- A Fir 8 inches in diameter bears N.88°E. 9 lks
- A Pine 30 inches in diameter bears S50°E. 24 lks.



Description of corner evidence found:

I find 1 inch galvanized iron pipe with Brass Cap set 8 inches above ground.

CAP STAMPED: *REN #70*

BEARING TREES:

- 16 inch Madrone bears N.34°W. 73.7 ft. (1/4 CS BT) visible. 1/4 S14
- Original 15 inch Fir Stump East 6.5 ft. (B) visible. S23
- Original 48 inch Pine Stump S.38E. 17.5 ft. (BT) visible. County Surveyors
- 16 inch Ash bears S12E. 48.6 ft. (S23 CS BT) visible. Office-1966

I find Corner lies in active slide area. I use single proportion method, and Corner moves downhill; which is impractical. I then establish the true position, (leaving the County Surveyors Corner out of position) by using call distance and bearing from 16 inch Madrona, which lies outside the recent slide area. By this method the new Corner position moves S.56°13'43"E. 3.55 feet from County Surveyors Corner. I then establish Witness Corners on the North Line of Section 23 to the East.

Description of monument and accessories I established to perpetuate the original location of this corner

I set a 30 inch long 2 1/2 inch diameter galvanized iron pipe 26 inches in the ground, in a mound of rock, with a 3 inch brass cap marked:

T31S R2W

WC

← 526.76

S14

S23

RLS 536 1975

BEARING TREES:

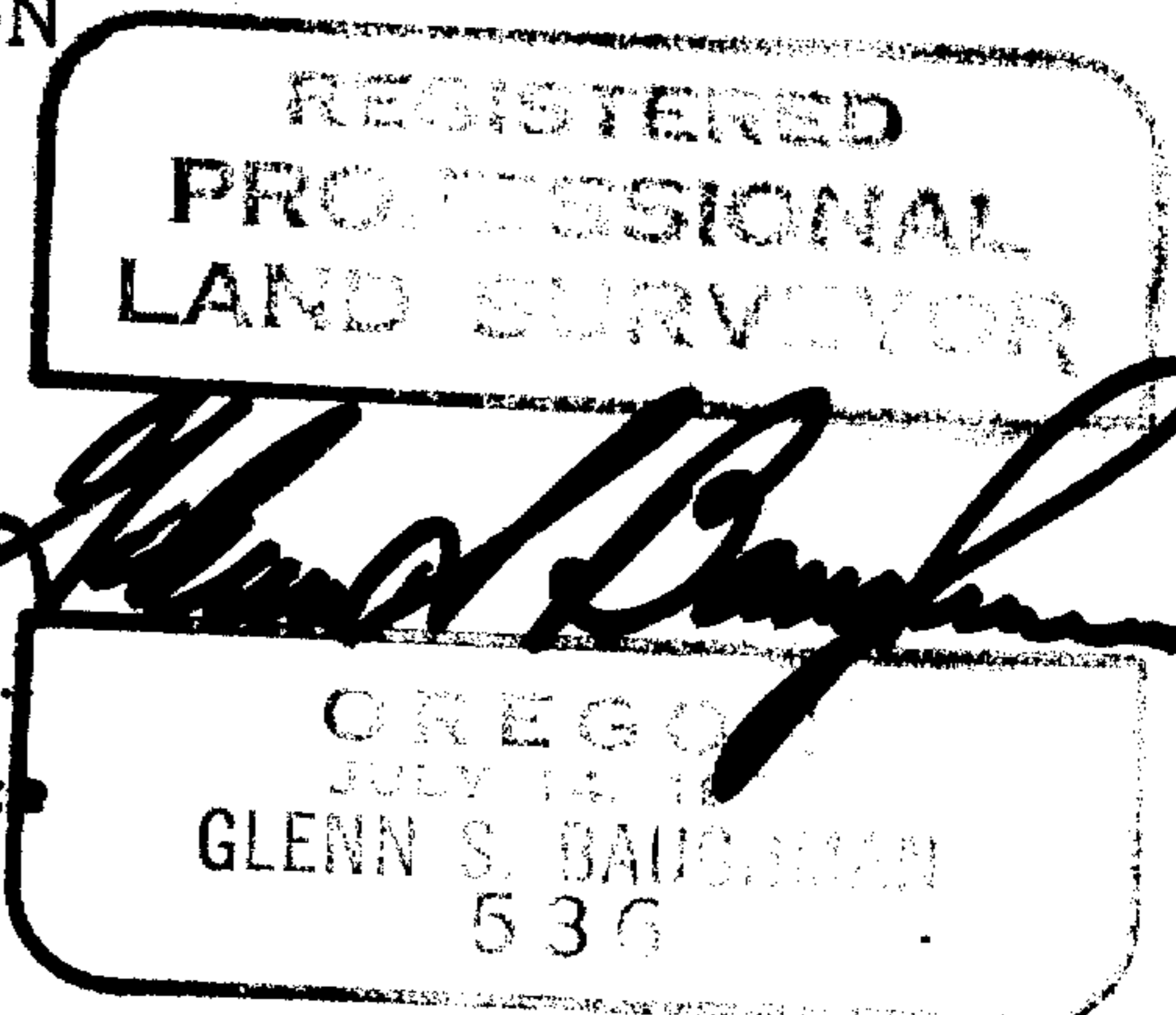
A Madrone 8 inches in diameter bears N 26°E. 138.0 feet scribed WC 1/4 S14 (BT) with a brass washer stamped LS 536, nailed at BT.

A Madrone 12 inches in diameter bears S.53°E. 84.0 feet, scribed WC 1/4 S23 (BT) with a brass washer stamped LS 536, nailed at BT.

NOTE: Both trees have a 6 inch red band painted around tree.

Corner lies 4 feet South of East-West fence in logged over unit.

From Book #5, page 49, Tiller Land Survey #14 - Contract #004610N



Office of *Surveyors* County of *Douglas*
 State of *Oregon*, I hereby certify that the within Instrument was filed in this office
 for record on the *5th* day of *February*
Francis P. Agname by *Virginia A. Yates*
 (COUNTY OFFICIAL) (DEPUTY)

#154 ✓

C