

**SURVEY FOR U.S. FOREST SERVICE
IN SECTION 15, T.31S. R.2W.W.M., DOUGLAS COUNTY, OREGON
BY: BAUGHMAN SURVEYING SERVICE, ROSEBURG, OREGON**

JANUARY 1975

SCALE: 1" = 400'

FILED
RECEIVED
JAN 20 1975
COUNTY SURVEYOR
DOUGLAS COUNTY, ORE.

B.T.'s
Fd. 22" Pine N66°W 64.6'
Fd. 9" Cedar S3°E 27.9'
Fd. 12" Cedar S63°W 102.1'
Fd. 26" Pine N2°E 98.6'
F.B. 4, pg. 30

B.T.'s
Fd. 23" Fir N28°W 8.4'
no sign of other B.T.'s.
F.B. 4, pg. 44

"I, GLENN S. BAUGHMAN, a registered professional land surveyor in the State of Oregon, hereby certify that this plat and the notes hereon, or attached, are a correct representation of a survey I performed during October thru December 1974 and January 1975, for the U.S. Forest Service, in accordance with the statutes of the State of Oregon and with the Articles of my contract.

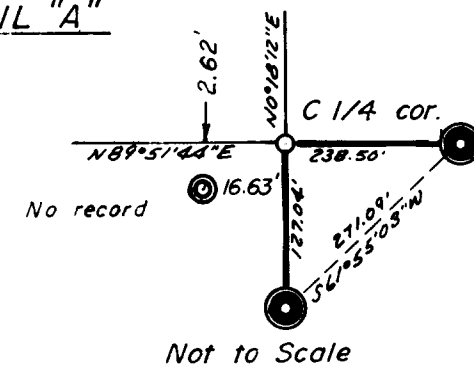
Glenn S. Baughman
GLENN S. BAUGHMAN

Glenn S. Baughman

B.T.'s
Fd. 10" Fir N20°W 27.8'
Fd. 28" Oak North 51.4'
Fd. 26" Oak S12°E 41.6'
F.B. 4, pg. 25

B.T.'s
Fd. 18" Fir stump N60°W 6.0'
Fd. 12" Cedar S66°W 8.0'
Fd. 10" Cedar S36°E 25.0'
F.B. 4, pg. 5

DETAIL "A"



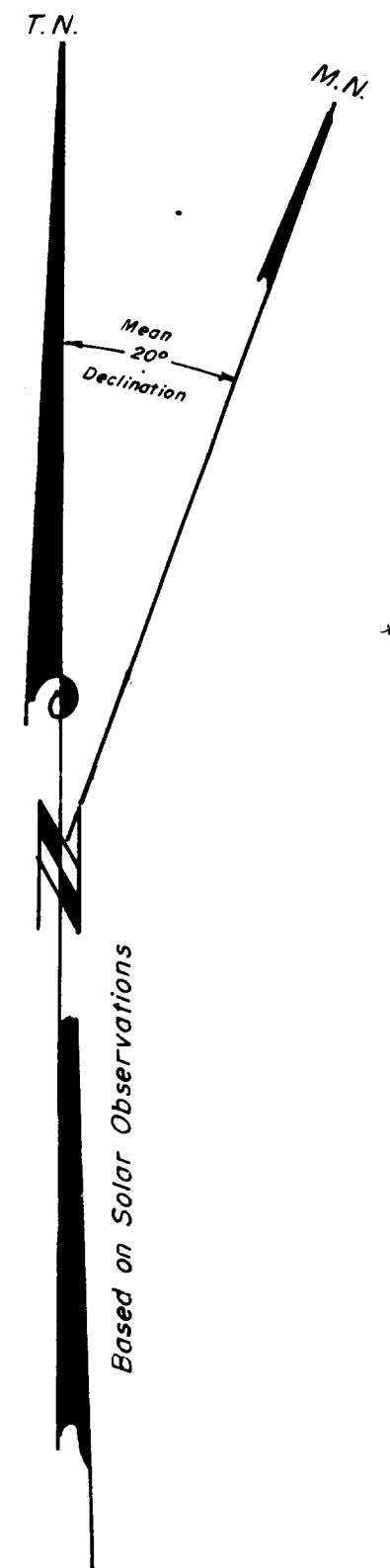
Not to Scale

B.T.'s
Fd. 12" Pine N72°W 11.1'
Fd. 36" Pine S45°E 45.0'
F.B. 3, pg. 13

B.T.'s
Fd. 10" Cedar N2°E 27.4'
Fd. 12" Cedar S34°W 57.6'
no other B.T.'s found
F.B. 1, pg. 10

LEGEND

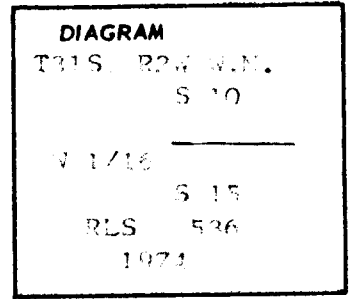
- ⊙ — Found Brass cap
- ⊙ — Set Brass cap
- ⊙ — Found 3/4" iron pipe
- True line posted with steel fence posts and government property signs.
- () Record Calls
- ① — See page number as indicated, i.e. 1, 2, 3, 4, 5, on form no. R6-7100-57 Certified Record of Land Corner Monumentation.



CERTIFIED RECORD OF LAND CORNER MONUMENTATION

History of original corner establishment:

NONE



FILED

RECEIVED *24*

JAN 20 1975

COUNTY SURVEYOR
DOUGLAS COUNTY, ORE.

Description of corner evidence found:

NONE

REGISTERED
TO ORIGINAL
OWNER

Edward Baughman
MAN

Description of monument and accessories I established to perpetuate the original location of this corner

I set a 30-inch long, 2 1/2 inch diameter galvanized iron pipe 26 inches in the ground, in a mound of stones, with a 4-inch brass cap marked:

Bearing trees:	W 1/16	S 10
		S 15
		1974 RLS 536

A white Fir, 7 inches diameter bears
N 20° E 21.5 feet scribed W 1/16 S 10 (B.T.)
with brass washer stamped RLS 536

A Cedar, 7 inches diameter bears S 39° E
56.6 feet scribed W 1/16 S 15 (BT) with
a brass washer stamped RLS 536

NOTE: Both trees have a 6 inch red band painted around tree.

Corner lies approximately 15 feet North of East-West
fence line on 30% East slope.

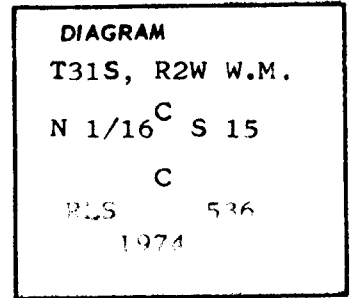
From Book # 4, page 46, Tiller Land Survey #14 - Contract #004610N.

Office of *Surveyor* County of *Douglas*
 State of *Oregon*, I hereby certify that the within instrument was filed in this office
 for record on the *20* day of *January*, 19*75*, at *2* o'clock *P.m.*, (signed)
Edward Baughman by *Edward Baughman*
 (COUNTY OFFICIAL) (DEPUTY)

CERTIFIED RECORD OF LAND CORNER MONUMENTATION

History of original corner establishment:

NONE



FILED

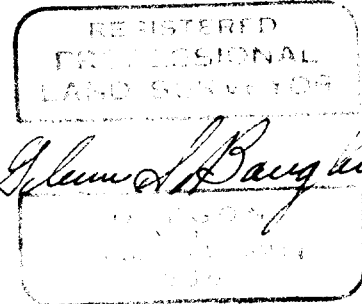
RECEIVED *2/2*

JAN 20 1975

Description of corner evidence found:

NONE

COUNTY SURVEYOR
DOUGLAS COUNTY, ORE.



Description of monument and accessories I established to perpetuate the original location of this corner

I set a 30-inch long, 2 1/2 inch diameter galvanized iron pipe 26 inches in the ground, in a mound of stones, with a 4-inch brass cap marked:

T 31 S R 2 W

C

N 1/16 S 15

C

1974 RLS 536

Bearing trees:

A Cedar, 16 inches diameter bears N 84° E
104.6 feet scribed CN 1/16 S 15 (BT)
with brass washer stamped RLS 536

A Fir, 10 inches diameter bears N 1°30' W
172.2 feet scribed CN 1/16 S 15 (BT)
with brass washer stamped RLS 536

NOTE: Bearing trees have a 6 inch red band painted around tree.

Corner lies in opening on steep South slope approximately 250 feet South of corner of timber.

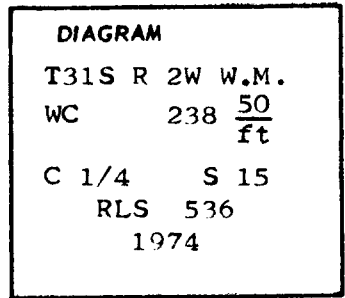
From Book #4, page 48, Tiller Land Survey #14 - Contract #004610N.

Office of Surveyor County of Douglas
 State of Oregon, I hereby certify that the within instrument was filed in this office
 for record on the 20 day of January, 1975, at 2 o'clock P.m., (signed)
Glenn A. Baughman by Christina A. Baughman
 (COUNTY OFFICIAL) (DEPUTY)

CERTIFIED RECORD OF LAND CORNER MONUMENTATION

History of original corner establishment:

NONE



FILED

RECEIVED *2/2*

JAN 20 1975

Description of corner evidence found:

NONE

COUNTY SURVEYOR
DOUGLAS COUNTY, ORE.

REGISTERED
PROFESSIONAL
LAND SURVEYOR

Glenn S. Baughman

DOUGLAS COUNTY
REGISTERED PROFESSIONAL
LAND SURVEYOR
NO. 1234

Description of monument and accessories I established to perpetuate the original location of this corner

I set a 30-inch long, 2 1/2 inch diameter galvanized iron pipe 24 inches in the ground, in a mound of stones, with a 4-inch brass cap marked:

Bearing trees:

A Pine, 10 inches diameter bears N 20.5° E 133.1 feet scribed WC C1/4 S15 (BT) with brass washer stamped RLS 536

A Pine, 7 inches diameter bears S 2.5° W 59.2 feet scribed WC C1/4 S15 (BT) with brass washer stamped RLS 536

T31S R2W	
WC	238 $\frac{50}{ft}$
C 1/4	S 15
1974	RLS 536

NOTE: Bearing trees have a 6 inch band of red painted around tree.

Corner is set on centerline of Section 15 N 89°51'44" E 238.50 feet from center 1/4, S 15 and lies in an open field 150 feet West of road.

From Book #4, page 49, Tiller Land Survey #14 - Contract #004610N.

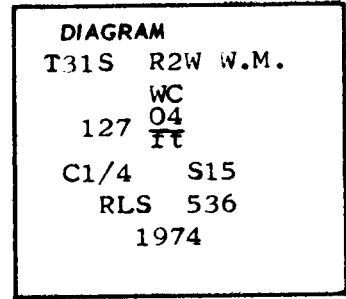
Office of *Surveyor* County of *Douglas*
 State of *Oregon*, I hereby certify that the within instrument was filed in this office
 for record on the *20* day of *January*, 19*75*, at *2* o'clock *p.m.*, (signed)
Glenn S. Baughman by *Cheryl A. Baughman*
 (COUNTY OFFICIAL) (DEPUTY)

#150 ✓

CERTIFIED RECORD OF LAND CORNER MONUMENTATION

History of original corner establishment:

NONE



FILED

RECEIVED 2/3

JAN 20 1975

Description of corner evidence found:

NONE

COUNTY SURVEYOR
DOUGLAS COUNTY, ORE.

REGISTERED
PROFESSIONAL
LAND SURVEYOR

Edward D. Rayburn

1975

Description of monument and accessories established to perpetuate the original location of this corner

I set a 30-inch long, 2 1/2 inch diameter galvanized iron pipe 26 inches in the ground, in a mound of stones, with a 4-inch brass cap marked:

Bearing trees:

A Cedar, 14 inches diameter bears S 2° E
147.0 feet scribed WC C1/4 S15 (BT) with
brass washer stamped RLS 536

A Fir, 7 inches diameter bears S 19° W
151.2 feet scribed WC C1/4 S15 (BT) with
brass washer stamped RLS 536

T31S R2W
WC
127 04
FF
C1/4 S15
RLS 536
1974

NOTE: Bearing trees have a 6 inch band of red painted around tree.

Corner is set on centerline of Section 15, S 0°18'12" W of true C1/4 and lies in open field approximately 150 feet West of road and approx. 110 feet North of timber line to South of corner.

From Book #4, page 49, Tiller Land Survey #14 - Contract #004610N.

Office of *Surveyor* County of *Douglas*
 State of *Oregon*, I hereby certify that the within instrument was filed in this office
 for record on the *20* day of *January*, 19 *75* at *2* o'clock *p.m.*, (signed)
Edward D. Rayburn by *Edward D. Rayburn*
 (COUNTY OFFICIAL) (DEPUTY)

#151 ✓