

SURVEY FOR TOM McDONNELL TO ESTABLISH AGREEMENT LINE WITH LAWLER

LOCATED IN SEC. 18, T30S, R1W, W.M.

JAN., 1975

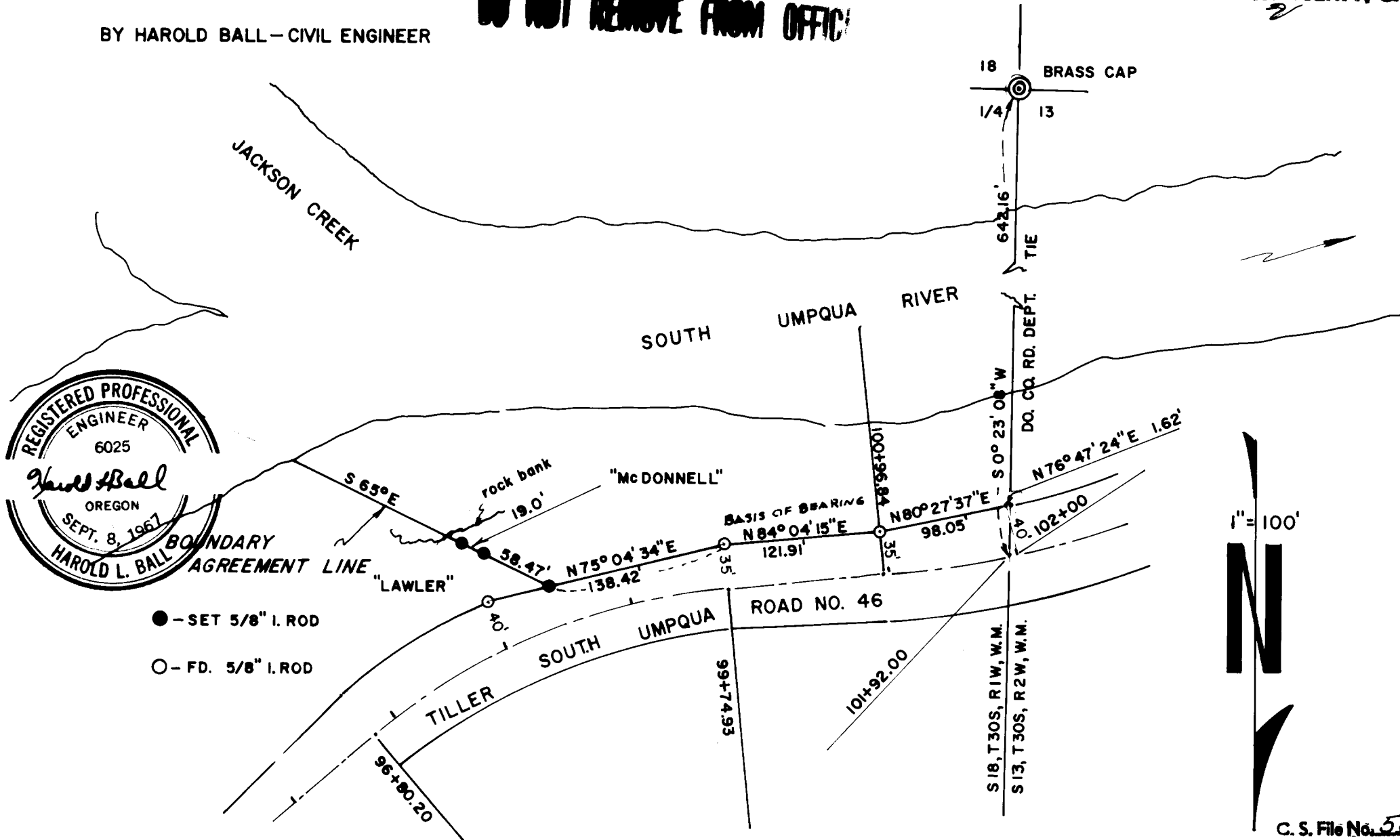
BY HAROLD BALL - CIVIL ENGINEER

FILED *✓*
RECEIVED

JAN 7 1975 KR

COUNTY SURVEYOR
DOUGLAS COUNTY, ORE.
2

**COUNTY SURVEYORS FILE DATA
DO NOT REMOVE FROM OFFICE**



C. S. File No. 58/27