

COUNTY SURVEYORS FILE
DO NOT REMOVE FROM

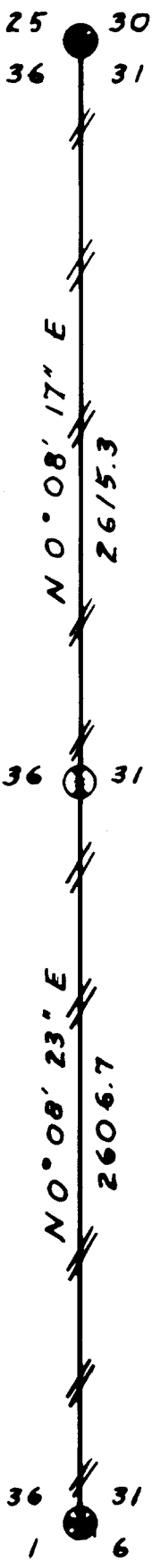
FILED ✓
RECEIVED ✓

SURVEY
OF
EAST LINE
SECTION 36, T23S, R2W, W.M. 7
DOUGLAS COUNTY, OREGON
FOR
WEYERHAEUSER COMPANY

DEC 11 1974

COUNTY SURVEYOR
DOUGLAS COUNTY, ORE.

FOUND : BLM PIPE WITH BRASS CAP
30" CEDAR STUMP, N16E, 36 IKS,
OLD BT
36" FIR STUMP, N56E, 74 IKS,
NEW BT
36" FIR, S56E, 17 IKS, OLD BT,
BARK SCRIBED
30" CEDAR SNAG, S72W, 58 IKS,
OLD BT
48" FIR, S62W, 46 IKS, NEW BT
30" FIR STUMP, N43½W, 44 IKS,
NEW BT



FOUND : BLM PIPE WITH BRASS CAP
36" FIR, S44½E, 31 IKS,
NEW BT
32" FIR, S53W, 78 IKS,
NEW BT

FOUND : BLM PIPE WITH BRASS CAP
18" WHITE FIR, N36½E, 46 IKS,
NEW BT
38" HEM, S40W, 19.0',
OLD BT
36" WHITE FIR SNAG,
N66W, 20.5', OLD BT



LEGEND :
CORNERS FOUND ○
LINES BLAZED #

BEARING ASSUMED

SCALE : 1" = 600'
MARCH 1973

BY :
TRIANGLE ENGR. CO.

