

FILED ✓
RECEIVED KR

DEC 3 1974

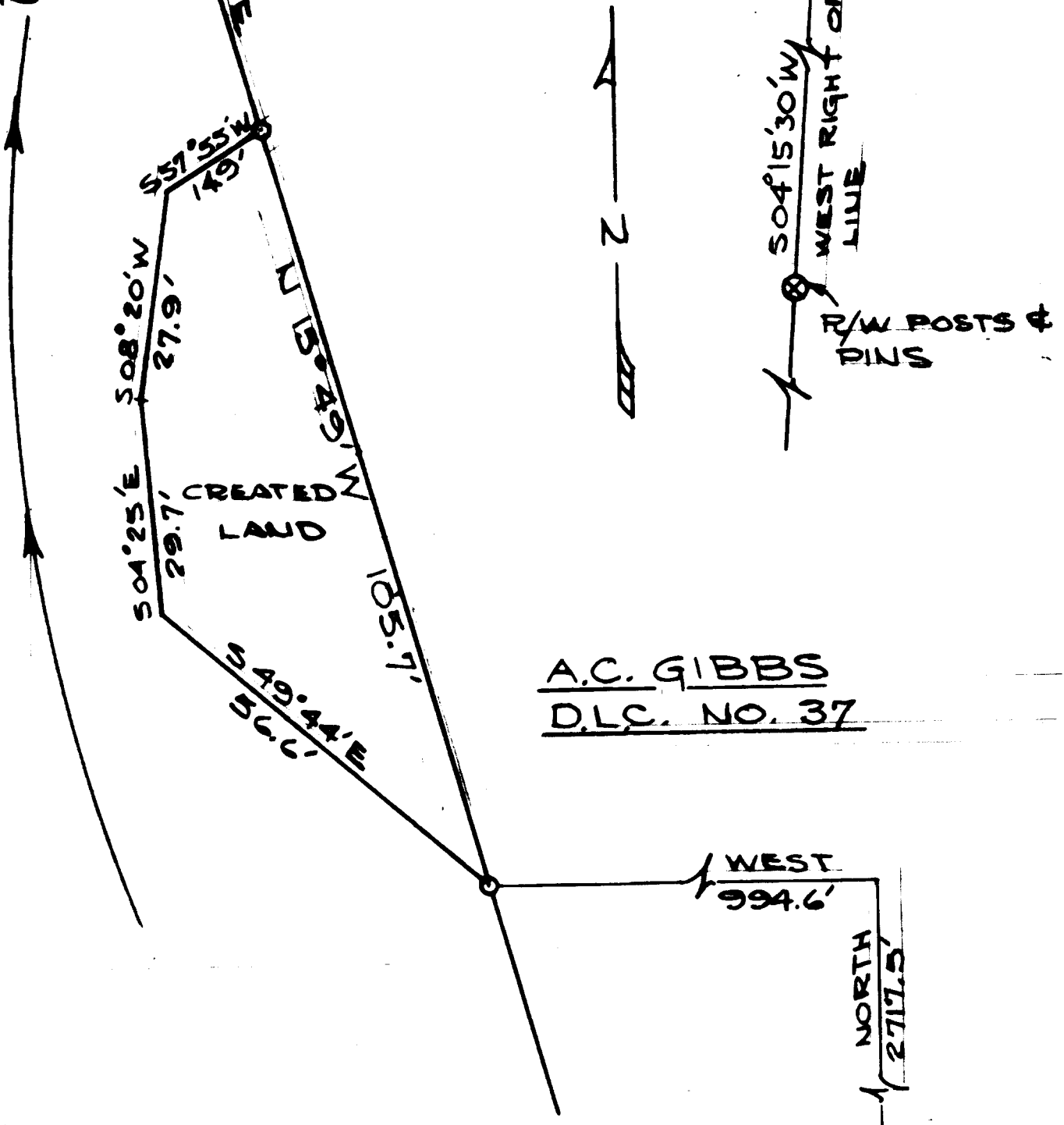
BASIS OF BEARINGS
OREGON COAST HIGHWAY

COUNTY SURVEYOR NO. 101 GARDINER SECTION
DOUGLAS COUNTY, ORE. STATION - 674+00

COUNTY SURVEYORS FILE COPY
DO NOT REMOVE FROM OFFICE

UMPQUA RIVER

MEANDER HIGHWAY



A.C. GIBBS
D.L.C. NO. 37

INTERNATIONAL PAPER CO.
GARDINER AREA
CREATED LAND FOR LOG DUMP

IN SECTION 22, T. 21S., R. 12W., WM.

SCALE 1" = 20'

⊗ CORNERS FOUND

○ CORNERS SET

MEANDER CORNER
BETWEEN SECTIONS
22 & 27 T. 21S., R. 12W., WM.

DATE OF SURVEY: OCTOBER 1974

Stephen V. White

C.S. FILE NO. 58/22

#3502