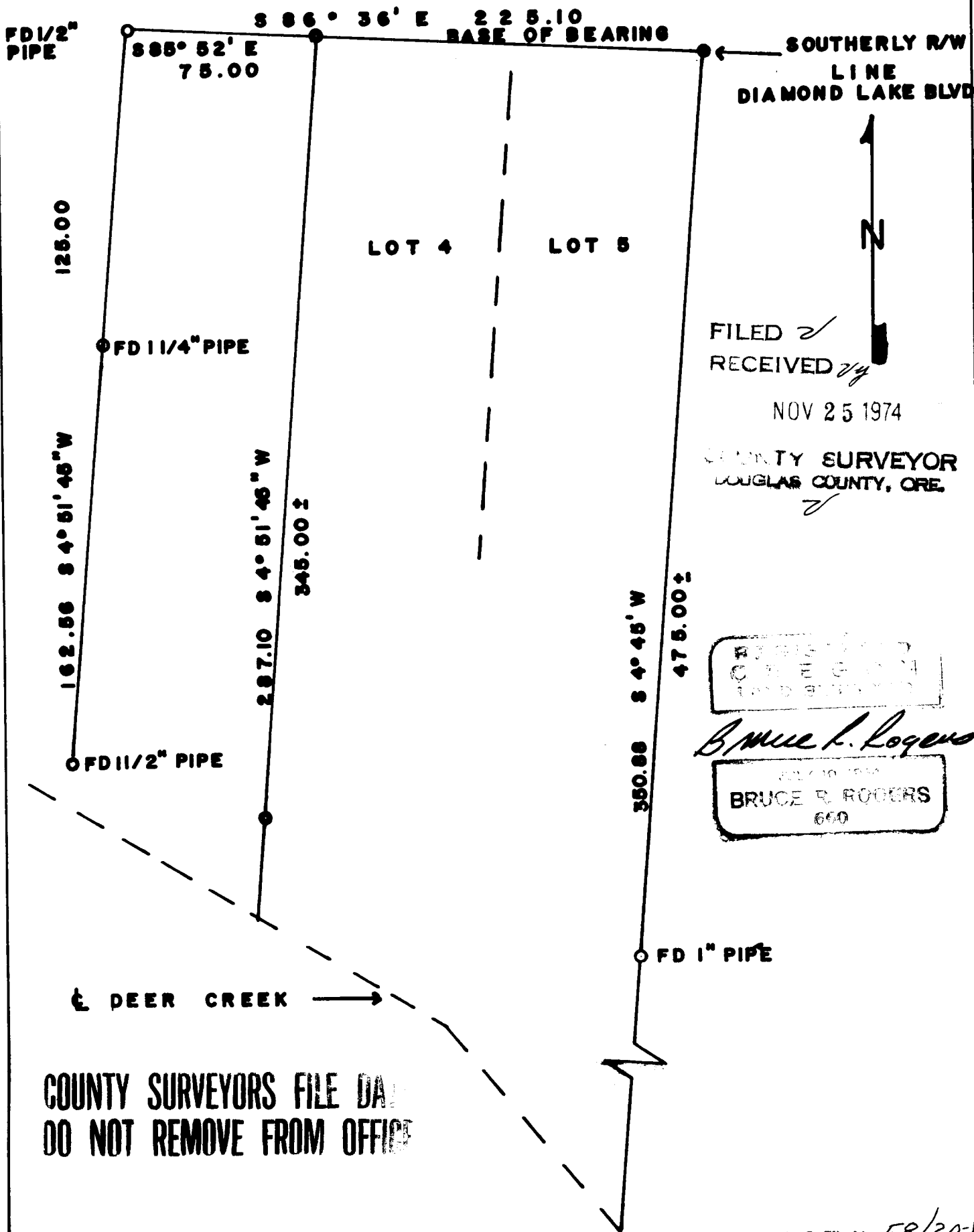


# SURVEY TO SET PROPERTY COR'S T27S R5W WM SECTION 19 LOTS 4 & 5 BLOCK 1 BUSHEYS ADD.

SURVEYED FOR D DIRKSEN  
SURVEYED BY B ROGERS  
NOV 1974

SCALE 1" = 50'  
O AS SHOWN  
● 3/4" IRON RODS SET



SOUTHERLY R/W  
LINE  
DIAMOND LAKE BLVD

FILED *✓*  
RECEIVED *2/4*

NOV 25 1974

COUNTY SURVEYOR  
DOUGLAS COUNTY, ORE.  
*✓*

REGISTERED  
CARTOGRAPH  
1968-1974

*Bruce R. Rogers*

BRUCE R. ROGERS  
660

COUNTY SURVEYORS FILE DATA  
DO NOT REMOVE FROM OFFICE