

FILED ✓  
RECEIVED ✓

OCT 22 1974

COUNTY SURVEYOR  
DOUGLAS COUNTY, ORE  
✓

COUNTY SURVEYORS FILE DATA  
DO NOT REMOVE FROM OFFICE

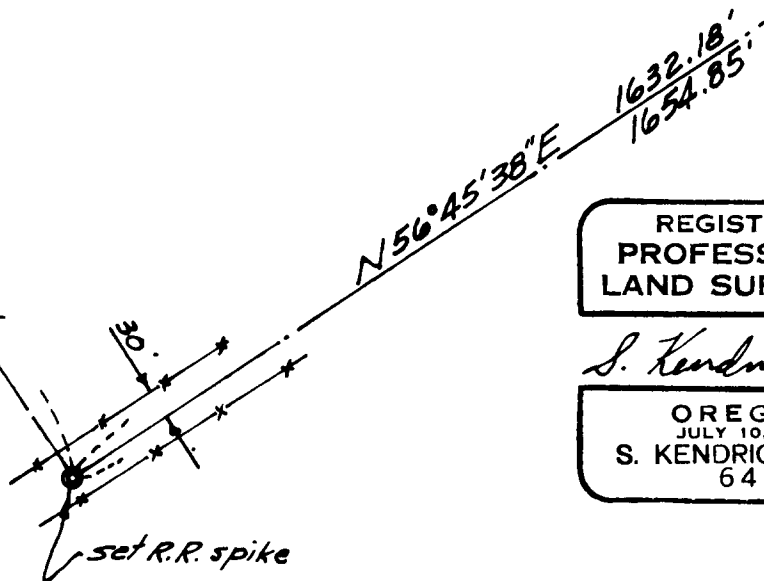
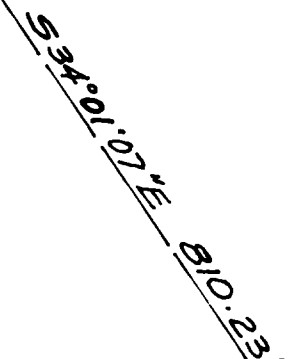
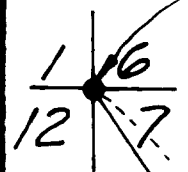
SURVEY FOR  
NORTHWEST PIPELINE CORPORATION  
SW 1/4-SEC. 6-T255-R5W-W.M.  
Scale: 1"=200' Oct. 16, 1974

NOTE: Bearings hereon are based on the assumption that the depression in the ground surface over the gas pipe line northerly of County Road No. 23 is 526°14'W.

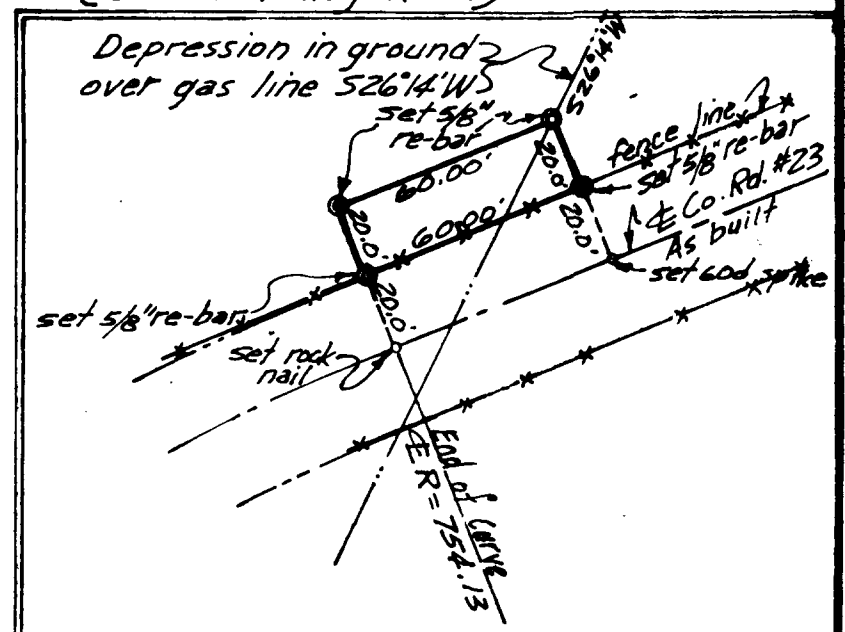
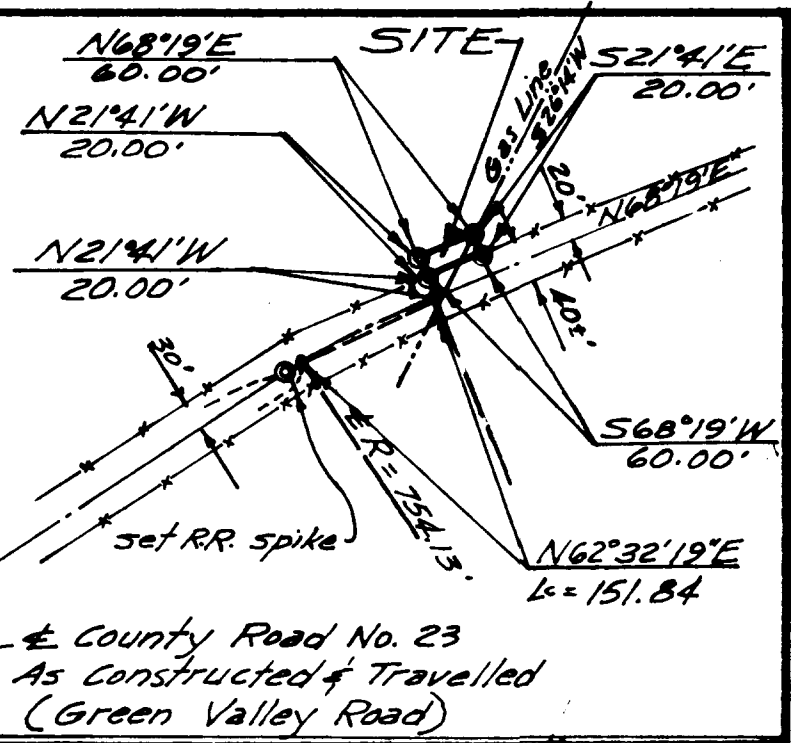
Fd. brass cap marking the N.W. corner of Section 7, T255-R5W-W.M.

STEPHEN H. FORD & ASSOCIATES INC.  
407 TIFFANY BUILDING  
797 WILLAMETTE STREET  
EUGENE, OREGON 97401  
PHONE 342-1000

S-H-FORD-PHONE-342-1000  
BOX-300-RR-1-EUGENE-OREGON-97401



REGISTERED PROFESSIONAL LAND SURVEYOR  
S. Kendrick Ford  
OREGON JULY 10, 1964  
S. KENDRICK FORD 642



SITE ENLARGEMENT  
Scale: 1"=50'

JOB NO. 2182  
DRAWN BY