

North Line Section 28, T. 21 S., R. 4 W., W.M.
Douglas County, Oregon

FILED ✓
RECEIVED 2/4

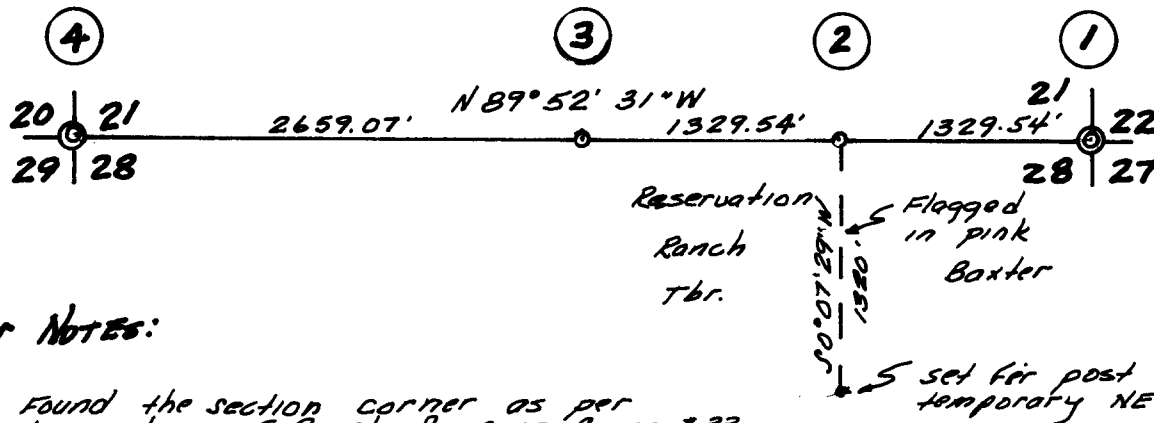
OCT 10 1974

COUNTY SURVEYOR
DOUGLAS COUNTY, ORE.

Oct. 8, 1974

Scale 1" = 1000'

Corners Found ⊙
Corners Set ○



Bearings
from
Solar
Dec 20° 07' E.

Corner Notes:

- ① Found the section corner as per description of County Surveyor, Corner # 33
- ② Set 1/2" iron pipe for E 1/16 corner. From which:
16" fir S 79° W 13.4 Ft.; 13" fir N 45° E 25.2 Ft.
- ③ Found no evidence of original 1/4 corner, set 1/2" iron pipe at proportionate distance from which: S.W. corner of a cabin N 23° E 5.8 Ft.; 10" Maple N 77° W 14.1 Ft.; 20" fir N 78° E 35.2 Ft.
- ④ Found the section corner as per description of County Surveyor, Corner # 71

Survey for:
Reservation Ranch
P.O. Box 1094
Coos Bay, Ore.

Survey by:
R.E. Stuntzner
1260 Golden
Coos Bay, Ore.



COUNTY SURVEYORS FILE DATA
DO NOT REMOVE FROM OFFICE