

SURVEY IN SECTION 18, TOWNSHIP 27 SOUTH., RANGE 5 WEST, WIL. MER.  
 LOTS 14, 15, 16, & 17, BLOCK 75, SUBDIVISION A KINNEY'S IMPROVED PLAT  
 Surveyed for Gerald Martin by Don E. Garrett  
 February, 1975

- Set 5/8" Iron Rod
- Found 5/8" Iron Rod

For block perimeter see M52-34

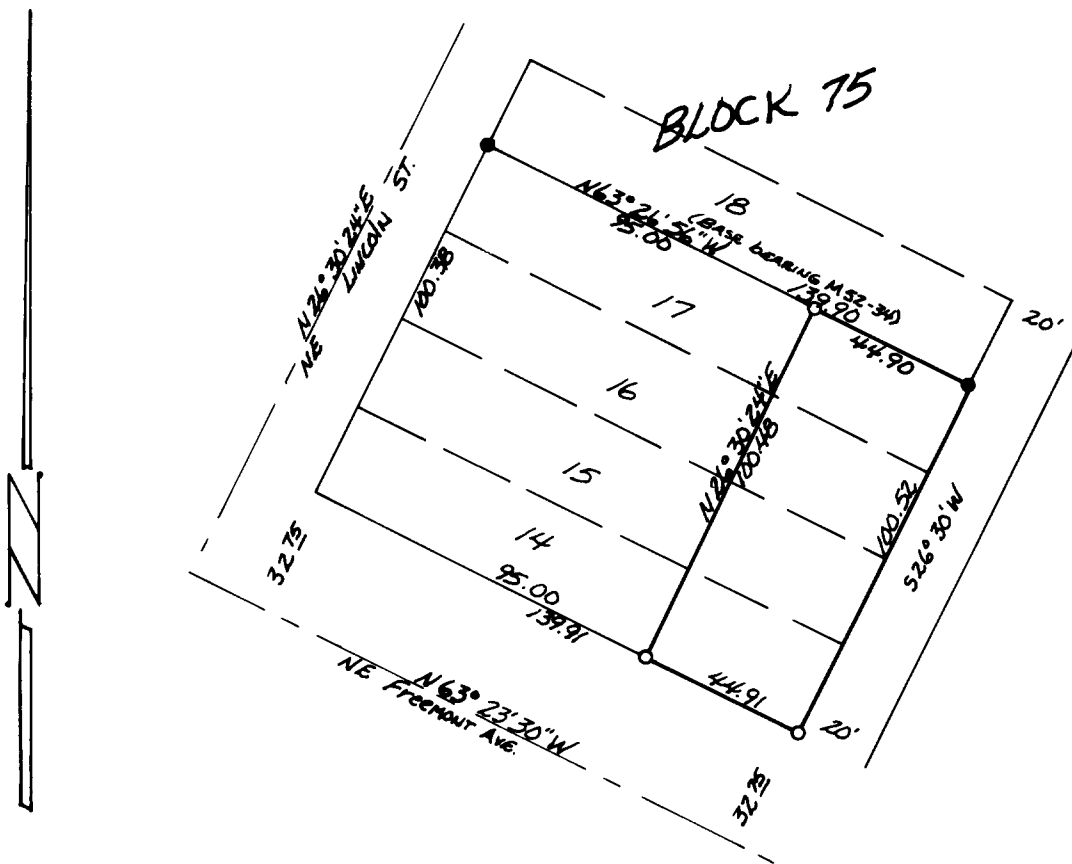
Scale 1" = 50'

**COUNTY SURVEYORS FILE DATA**  
**DO NOT REMOVE FROM OFFICE**

FILED ✓  
 RECEIVED ✓

FEB 2, 1975

COUNTY SURVEYOR  
 DOUGLAS COUNTY, ORE.  
 ✓



REGISTERED  
 PROFESSIONAL  
 LAND SURVEYOR

*Don E. Garrett*

OREGON  
 JULY 14, 1961  
 DON E. GARRETT  
 544