

SURVEY IN SECTION 18, TOWNSHIP 26 SOUTH, RANGE 5 WEST, WILLAMETTE MERIDIAN
Surveyed for Olive Hill by Don E. Garrett

October 1974

o-Set 5/8" I. Rod

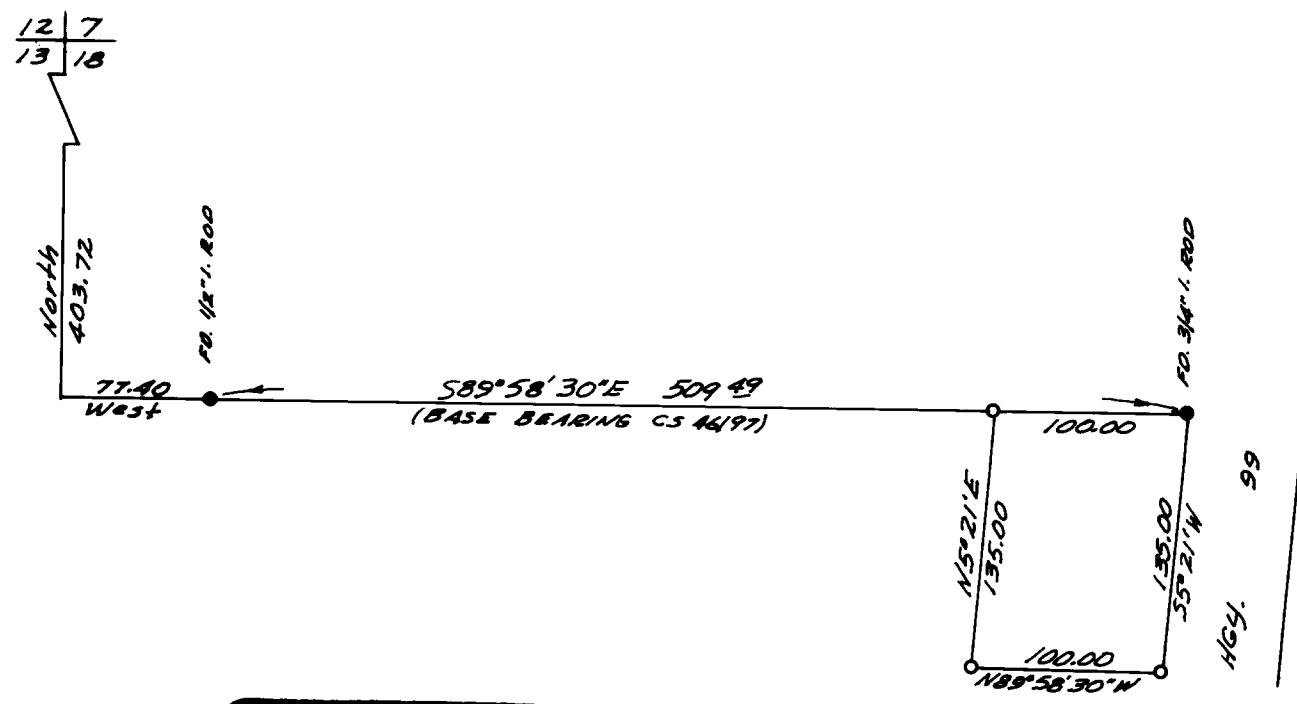
**COUNTY SURVEYORS FILE DATA
DO NOT REMOVE FROM OFFICE**

Scale 1" = 100'

FILED ✓
RECEIVED 2/4

OCT 9 1974

COUNTY SURVEYOR
DEGLAS COUNTY, ORE.
✓



REGISTERED
PROFESSIONAL
LAND SURVEYOR

Don E. Garrett

OREGON
JULY 24, 1961
DON E. GARRETT.
544