

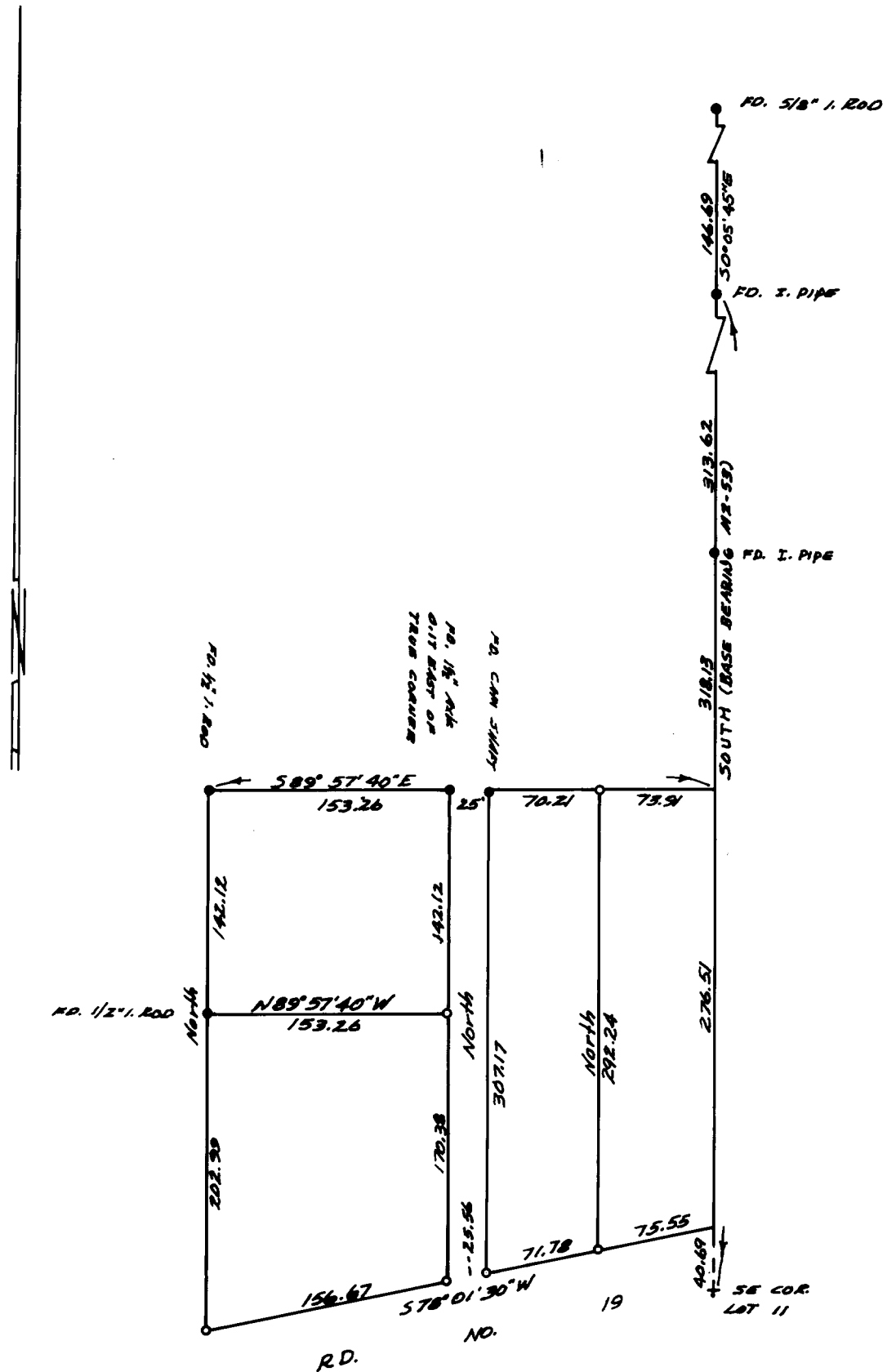
COUNTY SURVEYORS FILE DATA DO NOT REMOVE FROM OFFICE

FILED ✓
RECEIVED ✓

OCT 9 1974

SURVEY IN LOT 11, BLOCK 1, PLAT A, SUTHERLIN LAND & WATER CO.
SECT. 15, T25S, R5W, W.M.
Surveyed for M.R. Hausher & M. Sherwin by Don E. Garrett
October 1974
Scale 1" = 100'
o-Set 5/8" I. Rod

COUNTY SURVEYOR
DOUGLAS COUNTY, ORE.
✓



REGISTERED
PROFESSIONAL
LAND SURVEYOR

Don E. Garrett

OREGON
JULY 14, 1961
DON E. GARRETT
544