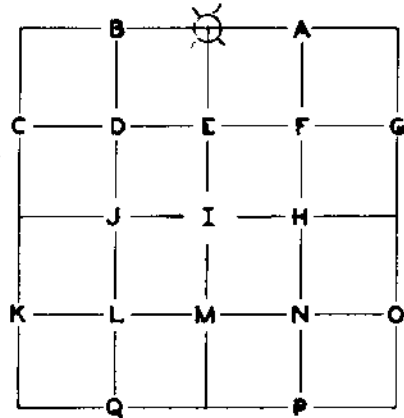


PUBLIC LAND FILED CORNERS

RECEIVED
JUN 3 1981

WEYERHAEUSER COMPANY
SPRINGFIELD BRANCH COUNTY SURVEYOR
DOUGLAS COUNTY, ORE.



TOWNSHIP 25S RANGE 2W

SECTION 4 CORNER N $\frac{1}{2}$

COUNTY Douglas OREGON

GLO SURVEY RECORD

DATE 1963
CORNER Brass Cap
(Set by GLO 1951)

PRESENT CONDITION - (DESCRIBE FULLY -
USE PAGE 2 IF NEEDED FOR EXPLANATION)
2/20/81

Found 1' under surface of
rock logging road

ACCESSORIES:

	BEARING-	LINKS-	FEET-
(1) 42" Hemlock (1951 bearing tree)	N12W	42	27.7
(2) 14" Cedar (1963 bearing tree)	S33W	79	52.1

Gone - removed by road construction.

Gone - did not survive logging.

Weyerhaeuser SURVEY RECORD 9/8/1976

By: F. G. McChesney ^{AT} Found 1951 GLO brass
cap and 1961 and 1963 BTs:
42" Hemlock N11W 27.4'; 14" Cedar
S35W 52.6'. Center of tree measurement
and scribing both trees.

Referenced W nails and plates on:

(3) 48" Fir	S49E	71.2'
(4) 40" Fir	S71W	69.0'
(5) 38" Fir	N36W	72.9'

PRESENT CONDITION: 2/20/81

As above.
Original BTs now gone as above.

Fir stump - W nail, plate OK
Fir stump - W nail, plate OK
Fir stump - W nail OK - renewed plate

XXXX
CORNER SET:

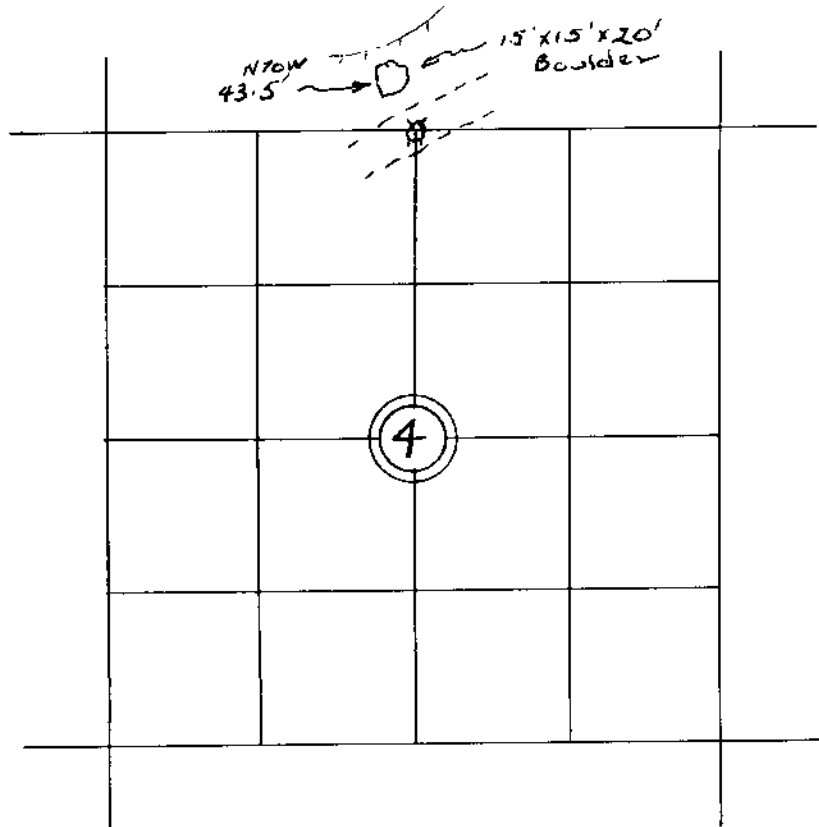
MAG. DECL.: 20°E

Brass cap 1' under surface of road

BEARING AND DISTANCE TO ABOVE IDENTIFIED SURVEY ACCESSORIES:

BEARING	FEET	DATE	DESCRIPTION
(3) S49E	71.2	7/13/76	Bearing and distance to W nail.
(4) S71W	69.0	7/13/76	Bearing and distance to W nail.
(5) N36W	72.9	7/13/76	Bearing and distance to W nail. (Stump was burned, W nail intact but plate was gone so renewed plate with same bearing and distance)

SECTION 4 TOWNSHIP 25S RANGE 2W



--- LINE MARKED BY NOTCH CUT IN BLAZE.

○...KNOWN CORNER.

⊗...REFERENCED CORNER
BY WEYERHAEUSER
METHOD.

Weyerhaeuser Survey Record by F. G. McChesney, 8/30/1978:

Found 1951 GLO brass cap "cached" behind a tree; the 1951 Hemlock and the 1963 Cedar BTs both gone. Reset the brass cap from W nails as per the Weyerhaeuser 7/13/1976 references. This brass cap was set 1' below the road surface, encircled by a 13" spoked pulley, plastic over the top, then covered with road rock.

Pulley

Top of brass cap 1' below road surface.

Added 1 new reference:

54" Fir Stump N31W 50.2'.

ACCESSORIES ~~ADDED TO THIS DATE~~
 Composite of all references as of 2/20/1981

MAGNETIC DECLINATION 20°E

	BEARING	FEET	ORIG. B.T.	"W" NAIL	PLATE	BRASS DISC
48" Fir Stump	S49E	71.2	7/13/76	X	X	---
40" Fir Stump	S71W	69.0	7/13/76	X	X	---
38" Fir Stump	N36W	72.9	7/13/76	X	X	---
✓ 54" Fir Stump	N31W	50.2	8/30/78	X	X	---

IDENTIFIED ON PHOTO:

INFORMATION ON LOCATION OF CORNER AS NOW SET:

GROUND COVER: Rocked logging road

(USING FORM LINES SKETCH TOPOG AT CORNER ON PAGE 2 PLAT)

SLOPE FACES (GIVE BEARING IN DEGREES) _____ ON MINUS (-) _____ %

NORTH: + 17%

SOUTH: - 20%

EAST: Level for 50' then descend

WEST: +15 35 then ascent steepens. N70W 43.5' to most easterly point of large boulder 15' x 15' x 20'.

FROM CORNER 1

FILED
RECEIVED

JUN 3 1981

COUNTY SURVEYOR
DOUGLAS COUNTY, ORE.

WORK DONE FOR W. CO. _____

FIELD NOTES IN BOOK: _____

BY: Glen McChesney DATE: 2/20/1981
Project ~~XXXXXXXX~~
 ENGINEER - SURVEYOR

ASSISTED BY: _____

COPIES SENT TO: Douglas County

UNDER THE SUPERVISION OF:

REGISTERED
PROFESSIONAL
LAND SURVEYOR

3/27/81

Frank O. Williams

OREGON
JULY 12, 1968
FRANK O. WILLIAMS
0875

SEAL

PAGE 3

C. S. File No. 58/B

36	31	32	33	34	35	36	31
1	6	5	4	3	2	1	6
12	7	8	9	10	11	12	7
13	18	17	16	15	14	13	18
24	19	20	21	22	23	24	19
25	30	29	28	27	26	25	30
36	31	32	33	34	35	36	31
1	6	5	4	3	2	1	6

WEYERHAEUSER COMPANY

CORNER REFERENCE METHOD CONSISTS OF:

A "W" NAIL DRIVEN THRU THE HOLE IN A BRASS DISC, INTO A NOTCH CUT LOW ON A TREE, STAMPED WITH THE OREGON REGISTERED LAND SURVEYOR OR PROFESSIONAL ENGINEER REGISTRATION NUMBER.

AN EMBOSSED ALUMINUM PLATE, NAILED HEAD HIGH ON SAME TREE WITH 8D ALUMINUM NAILS, WITH DISTANCE AND BEARING FROM THE "W" NAIL TO THE CORNER STAMPED ON IT.

