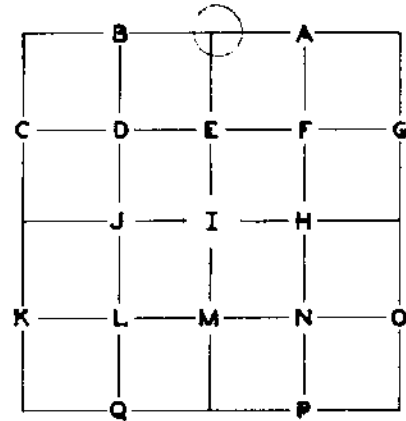


PUBLIC LAND CORNERS

FILED
RECEIVED *JK*
DEC 22 1980

WEYERHAEUSER COMPANY
SPRINGFIELD BRANCH COUNTY SURVEYOR
DOUGLAS COUNTY, ORE.



TOWNSHIP 24S RANGE 2W
SECTION 16 CORNER N 1/4
COUNTY Douglas OREGON

GLO SURVEY RECORD				PRESENT CONDITION - (DESCRIBE FULLY - USE PAGE 2 IF NEEDED FOR EXPLANATION.)
CORNER <u>Post</u> DATE: <u>1894</u>				No trace
ACCESSORIES:				
48" Fir	BEARING- N 40 E	LINKS- 12	FEET- 7.9	54" Fir; chopped open lower part of single face & exposed scribed "T" 8" X 4' Chinquapin stub, remainder of tree on ground. Tree grew with lean to east. Evidence of old face, scribing no longer visible.
6" Chinquapin	S 30 E	43	28.4	
Weyerhaeuser SURVEY RECORD DATE: <u>June 1941</u>				PRESENT CONDITION:
Cruiser Report: Fir BT Identified by John Fuchek, Weyerhaeuser Company Cruiser.				As above

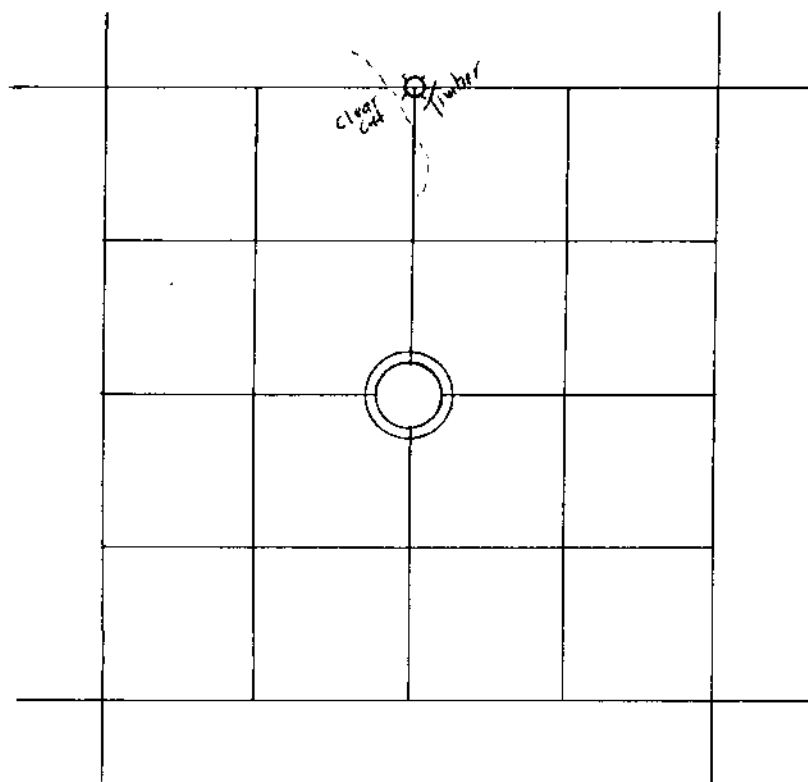
CORNER SET: Drove 3" X 4' Yew post at cornerpoint MAG. DECL.: 20°

BEARING AND DISTANCE TO ABOVE IDENTIFIED SURVEY ACCESSORIES:

BEARING-	FEET-	SURVEY -	
N 40 E	7.9	1894	face measurement
S 30 E	28.4	1894	face measurement


#104 ✓

SECTION 16 TOWNSHIP 24SS RANGE 2W



 LINE MARKED BY NOTCH CUT IN BLAZE.

 KNOWN CORNER.

 REFERENCED CORNER
BY WEYERHAEUSER
METHOD.

ACCESSORIES ADDED THIS DATE:

MAGNETIC DECLINATION 20°

	BEARING	FEET	ORIG. B.T.	"W" NAIL	PLATE	BRASS DISC
54" Fir	N 40 E	7.5	X	X	X	--
40" Fir	S 6 1/2 W	25.5	-	X	X	--

IDENTIFIED ON PHOTO:

INFORMATION ON LOCATION OF CORNER AS NOW SET:

GROUND COVER: Rhododendron, Chinquapin, Yew

(USING FORM LINES SKETCH TOPOG AT CORNER ON PAGE 2 PLAT)

SLOPE FACES (GIVE BEARING IN DEGREES) N 55 E ON MINUS (-) 55 %

NORTH: -22%

FROM CORNER SOUTH: ±21% for 75' to edge of clear cut

EAST: -52%

WEST: +52% for 40' to clear cut

WORK DONE FOR W. CO.

FIELD NOTES IN BOOK:

BY: Glen McChesney Project ENGINEER - SURVEYOR

DATE: June 10, 1977

ASSISTED BY:

COPIES SENT TO:

UNDER THE SUPERVISION OF:

REGISTERED PROFESSIONAL LAND SURVEYOR

Frank O. Williams

OREGON JULY 12, 1969 FRANK O. WILLIAMS 0875

FILED RECEIVED DEC 22 1980 COUNTY SURVEYOR DOUGLAS COUNTY, ORE

SEAL

36	31	32	33	34	35	36	31
1	6	5	4	3	2	1	6
12	7	8	9	10	11	12	7
13	18	17	16	15	14	13	18
24	19	20	21	22	23	24	19
25	30	29	28	27	26	25	30
36	31	32	33	34	35	36	31
1	6	5	4	3	2	1	6

WEYERHAEUSER COMPANY

CORNER REFERENCE METHOD CONSISTS OF:

A "W" NAIL DRIVEN THRU THE HOLE IN A BRASS DISC, INTO A NOTCH CUT LOW ON A TREE, STAMPED WITH THE OREGON REGISTERED LAND SURVEYOR OR PROFESSIONAL ENGINEER REGISTRATION NUMBER.

AN EMBOSSED ALUMINUM PLATE, NAILED HEAD HIGH ON SAME TREE WITH 8D ALUMINUM NAILS, WITH DISTANCE AND BEARING FROM THE "W" NAIL TO THE CORNER STAMPED ON IT.

