

# PUBLIC LAND CORNERS

SPRINGFIELD

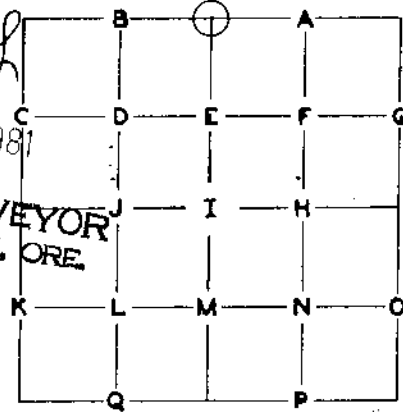
SURVEY FILE

WEYERHAEUSER COMPANY  
SPRINGFIELD BRANCH

FILED  
RECEIVED

JUN 3 1981

COUNTY SURVEYOR  
4 DOUGLAS COUNTY, ORE.



TOWNSHIP 23 S RANGE \_\_\_\_\_  
SECTION 12 CORNER N 1/4  
COUNTY Douglas OREGON

**GLO SURVEY RECORD**

DATE: 1885

CORNER Post

PRESENT CONDITION - (DESCRIBE FULLY -  
USE PAGE 2 IF NEEDED FOR EXPLANATION.)

No trace

**ACCESSORIES:**

	BEARING-	LINKS-	FEET-	
40" Fir	N 28 E	43	28.4	48" down Fir moved out of place by old logging. Axe marks only.
50" Fir	S 8 E	64	42.2	50" Fir - has been down for several years. Burned - no scribing visible - old axe marks

**SURVEY RECORD**

DATE: \_\_\_\_\_

PRESENT CONDITION: \_\_\_\_\_

Found in field:

A "T" iron at point for corner at record distance and bearing from SE BT

See page 2

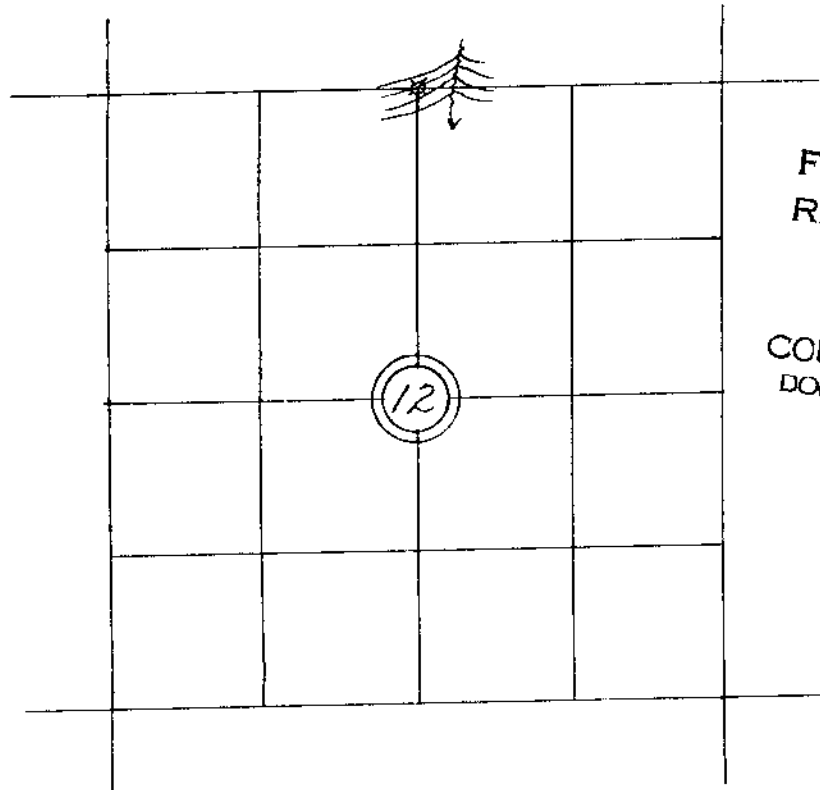
CORNER SET: T Iron as set by Wilford Haines MAG. DECL.: 20°

**BEARING AND DISTANCE TO ABOVE IDENTIFIED SURVEY ACCESSORIES:**

BEARING-	FEET-	SURVEY -	
N 28 E	49.0	GLO	Log has been moved by old logging
S 8 E	42.2	"	To stump hole position of BT if standing.

*See Gen #124*

SECTION 12 TOWNSHIP 23 S RANGE 4 W



FILED  
RECEIVED  
JUN 3 1981  
COUNTY SURVEYOR  
DOUGLAS COUNTY, ORE.

— // — // — // — LINE MARKED BY NOTCH CUT IN BLAZE.

○ — KNOWN CORNER.

⊗ — REFERENCED CORNER  
BY WEYERHAEUSER  
METHOD.

is "T" iron was set by Wilford Haines from original and other confirming evidence of  
is being the correct corner location.

ACCESSORIES ADDED THIS DATE:

MAGNETIC DECLINATION 20°

	BEARING	FEET	ORIG. B.T.	'W' NAIL	PLATE	BRASS DISC
10" Fir	S 21 W	34.0	---	X	X	---

FILED  
RECEIVED

JUN 3 1981

COUNTY SURVEYOR  
DOUGLAS COUNTY, ORE.

IDENTIFIED ON PHOTO:

INFORMATION ON LOCATION OF CORNER AS NOW SET

GROUND COVER: Hazel, Salal, and old logging burn.

(USING FORM LINES SKETCH TOPOG AT CORNER ON PAGE 2 PLAT)

SLOPE FACES (GIVE BEARING IN DEGREES) S 35 E ON MINUS (-) 35 %

NORTH: + 35%

FROM CORNER |

SOUTH: - 35%

EAST: - 25%

WEST: + 25%

WORK DONE FOR W. CO. \_\_\_\_\_

FIELD NOTES IN BOOK: \_\_\_\_\_

BY: Glen Mc Chesney  
~~ENGINEER - SURVEYOR~~  
*Land Agent*

DATE: July 30, 1963

UNDER THE SUPERVISION OF:

ASSISTED BY: \_\_\_\_\_

COPIES SENT TO: \_\_\_\_\_

SEAL

C. S. File No. 58/B

36	31	32	33	34	35	36	31
1	6	5	4	3	2	1	6
12	7	8	9	10	11	12	7
13	18	17	16	15	14	13	18
24	19	20	21	22	23	24	19
25	30	29	28	27	26	25	30
36	31	32	33	34	35	36	31
1	6	5	4	3	2	1	6

## WEYERHAEUSER COMPANY

CORNER REFERENCE METHOD CONSISTS OF:

A "W" NAIL DRIVEN THRU THE HOLE IN A BRASS DISC, INTO A NOTCH CUT LOW ON A TREE, STAMPED WITH THE OREGON REGISTERED LAND SURVEYOR OR PROFESSIONAL ENGINEER REGISTRATION NUMBER.

AN EMBOSSED ALUMINUM PLATE, NAILED HEAD HIGH ON SAME TREE WITH 8D ALUMINUM NAILS, WITH DISTANCE AND BEARING FROM THE "W" NAIL TO THE CORNER STAMPED ON IT.

