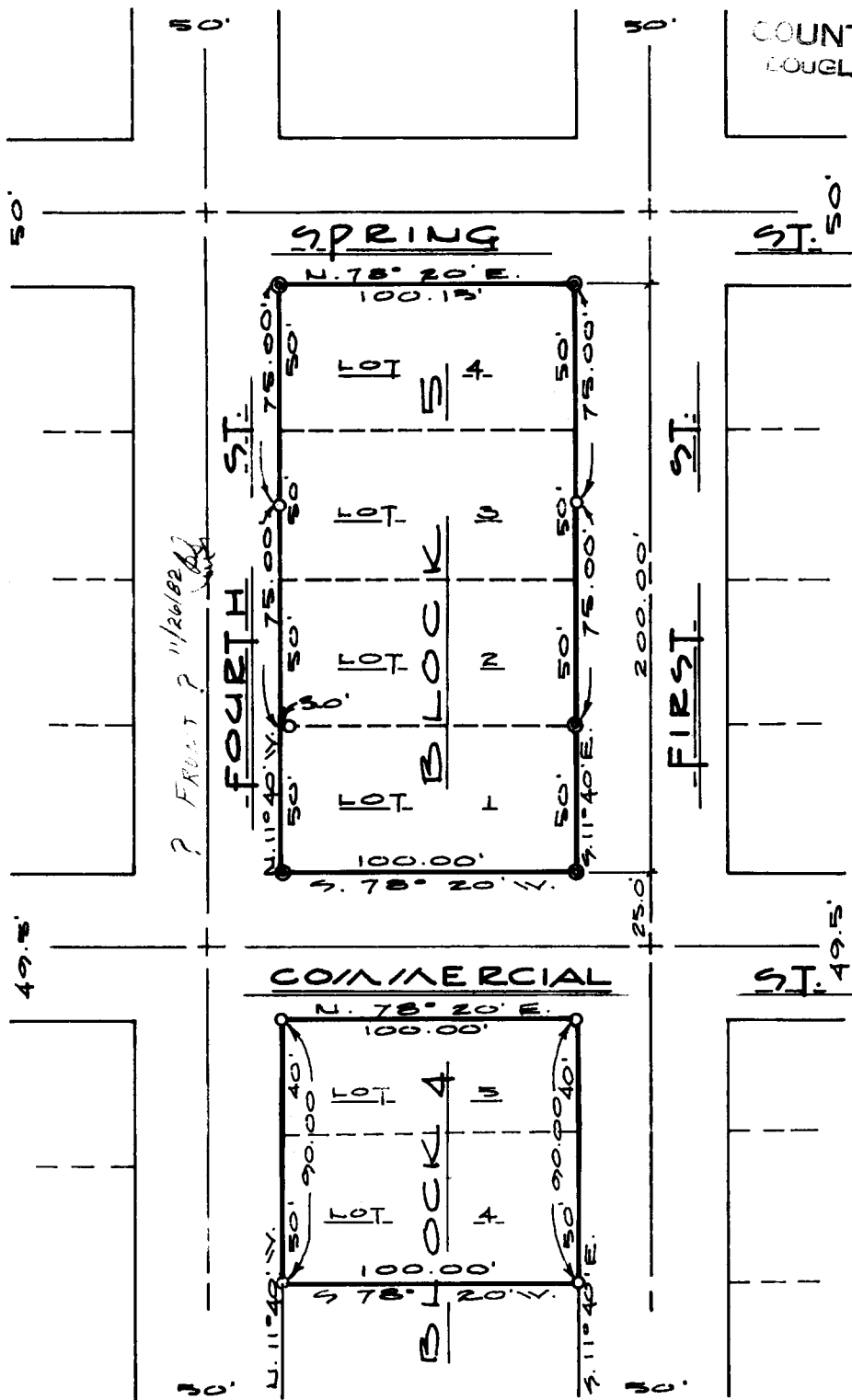


FILED
RECEIVED

SEP 16 1974

COUNTY SURVEYOR
DOUGLAS COUNTY, ORE

ml



PROPERTY SURVEY

LOTS 1, 2, 3, & 4, BLOCK 5,
FOR: BYRON GERFLING
LOTS 4 & 5, BLOCK 4 T.215 R.12W. Sec.22
FOR: ROBERT MORRIS
TOWN OF GARDINER
DOUGLAS COUNTY, OREGON
SCALE: 1"=60' JUNE 24, 1974

- LEGEND**
- FOUND I.P.
 - SET I.P.

COUNTY SURVEYORS FILE DATA
DO NOT REMOVE FROM OFFICE

REGISTERED
PROFESSIONAL
LAND SURVEYOR

Robert W. Wade

OREGON
OCTOBER 4, 1957
ROBERT W. WADE
433



ENGINEERS • PLANNERS

5TH AND HIGHLAND
COOS BAY, OREGON
262-1168