

CS. 58/2-4

SURVEY TO SET ONE-SIXTEENTH CORNER

COUNTY SURVEYORS FILE DATA IN SECTION 23 T 29 S R 4 W W.M.
DO NOT REMOVE FROM OFFICE

FOR SUN STUDS INC.

BY BURTON W. HOLT

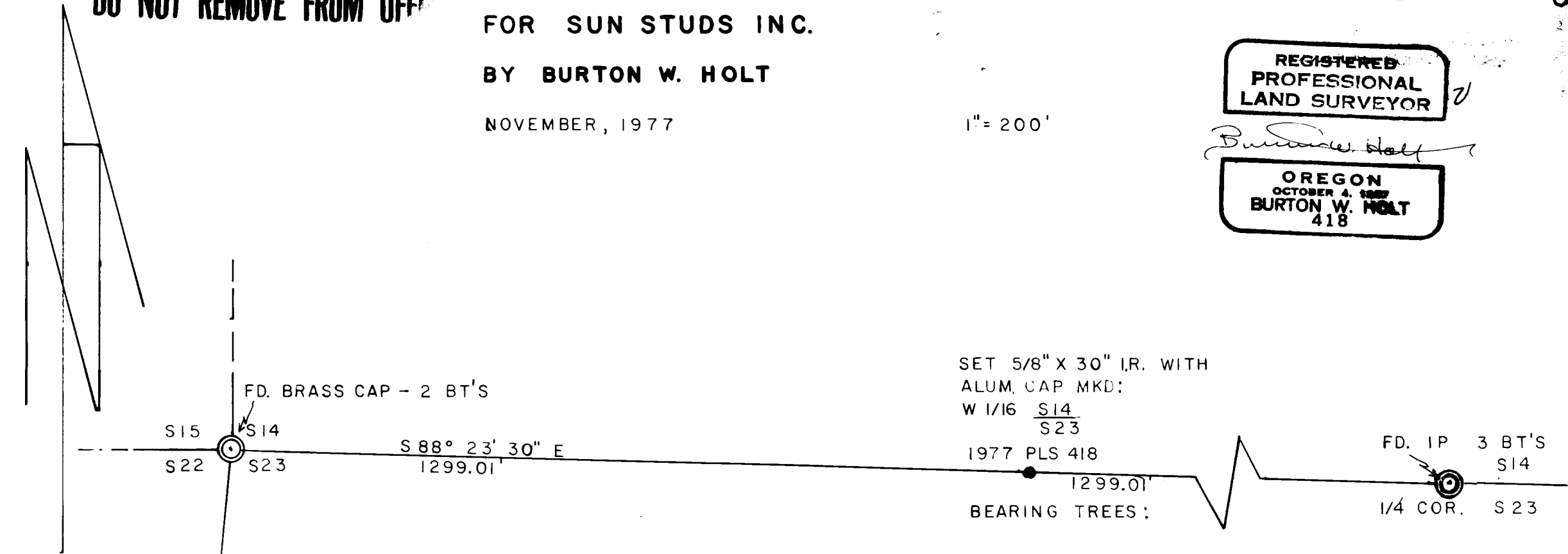
NOVEMBER, 1977

1" = 200'

REGISTERED
PROFESSIONAL
LAND SURVEYOR

Burton W. Holt

OREGON
OCTOBER 4, 1967
BURTON W. HOLT
418



BASIS OF BEARING:
MAP FILE - M32-21

39

SET 5/8" X 30" I.R. WITH
ALUM. CAP MKD:

W 1/16 $\frac{S14}{S23}$

1977 PLS 418
1299.01'

BEARING TREES:

8" MAPLE BEARS S 23° W 34'
MKD. W 1/16 S 23 BT

10" W. FIR BEARS N 74° E 42.5'
MKD W 1/16 S 14 BT

FD. IP 3 BT'S
S14
1/4 COR. S 23

CS. 58/2-4