

**SURVEY TO SET S 1/16 CORNER
SITUATED IN SEC. 23 & 24 T. 28 S., R. 8 W., W.M.**

FOR · SUN STUDS INC.
BY · BURTON W. HOLT
OCT. 1977

**COUNTY SURVEYORS FILE UNIT
DO NOT REMOVE FROM OFFICE**

SCALE 1" = 400'

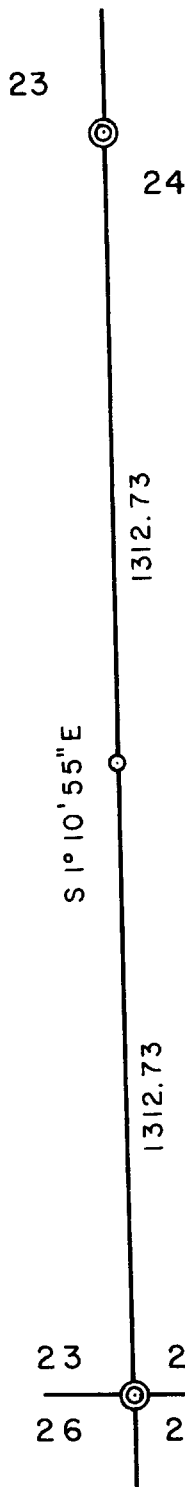
FILED ✓
RECEIVED ✓

OCT 11 1977

COUNTY SURVEYOR
DOUGLAS COUNTY, ORE.



BASED ON SOLAR OBSERVATION



1/4 CORNER NOT IN
FD. 24" BLACK OAK SNAG
BEARS S39 1/2° W 217.5
1/4 S23 (VISIBLE ON OPEN FACE)

REGISTERED
PROFESSIONAL
LAND SURVEYOR

Burton W. Holt

OREGON
OCTOBER 12, 1977
BURTON W. HOLT
418

S 1/16 CORNER
SET 5/8" X 30" I.R. WITH ALUMINUM CAP
MKD. S 1/16
S23 | S24
1977 | 418

FROM WHICH BEARS
8" FIR S31° W 35.0 MKD. S1/16 S23 BT
8" FIR N32° E 31.8 MKD. S1/16 S24 BT
BRASS WASHER STAMPED (L. S. 418)
NAILED AT B.T. BOTH TREE'S

FD. BRASS CAP SET FLUSH WITH GROUND
BY U.S. GENERAL LAND OFFICE "1924"
FROM WHICH BEARS

23	24	24" FIR S51° E 28.8	WITH HEALED FACE
		18" W. FIR S38° W 36.8	" " "
26	25	20" W. FIR N34 1/2° W 23.0	" " "
		14" W. FIR N78° E 31.2	" " "

COR. LIE'S APPROX. 10' WEST OLD FEN. LINE
ON GRADUAL N.E. SLOPE

C. S. File No. 58/2-3