

SURVEY FOR PROPERTY DESCRIPTION SITUATED IN SECTION 2, T.23S. R.4 W. W.M.

FOR SUN STUDS INC.

BY BURTON W. HOLT

**COUNTY SURVEYORS FILE DATA
DO NOT REMOVE FROM OFFICE**

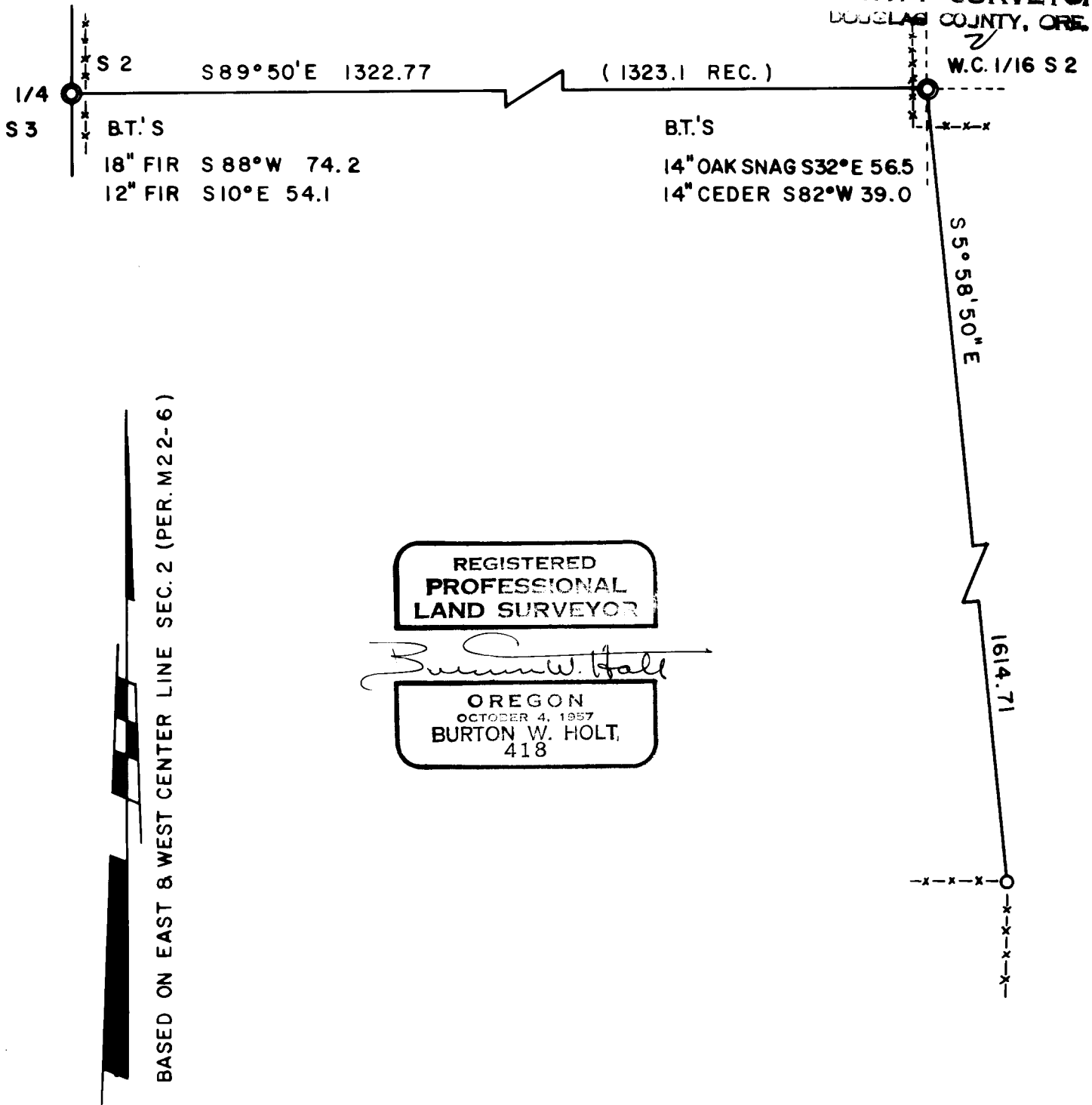
FEB. 1977

FILED ✓

RECEIVED DLS

FEB 24 1977

COUNTY SURVEYOR
DOUGLAS COUNTY, ORE.



REGISTERED
PROFESSIONAL
LAND SURVEYOR

Burton W. Holt

OREGON
OCTOBER 4, 1957
BURTON W. HOLT,
418

SCALE - AS SHOWN

- ⊙ FD. 1"x1" T-IRON
- SET 5/8" IRON ROD

C.S. File No. 58/2-2