

SURVEY FOR MORTGAGE PURPOSES IN SECTION 31, TWP. 27 STH., RNG. 5 WST., W.M.

Surveyed for Jack Havel by Don E. Garrett

AUGUST 1974

● - Found 5/8" I. Rod

○ - Set 5/8" I. Rod

Bearings are based on the South Line of Sect. 30 M42-50.

Scale 1" = 200'

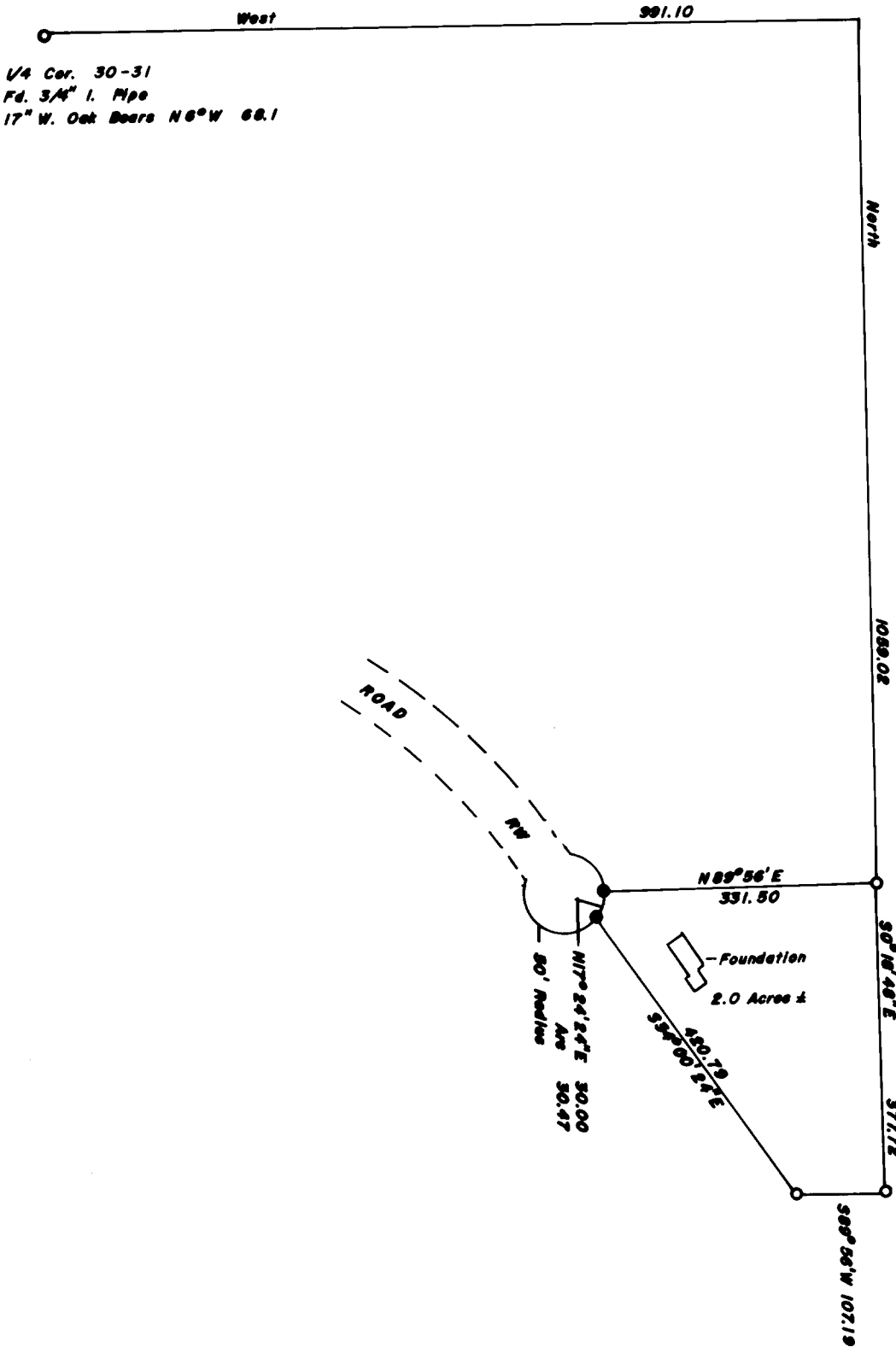
COUNTY SURVEYORS FILE DATA
DO NOT REMOVE FROM OFFICE

FILED ✓
RECEIVED *Sue*

AUG 27 1974

COUNTY SURVEYOR
DOUGLAS COUNTY, ORE.

m.f.



REGISTERED
PROFESSIONAL
LAND SURVEYOR

Don E. Garrett

OREGON
JULY 14, 1961
DON E. GARRETT
544