

SURVEY OF THE NORTH LINE OF SECTION 21, TOWNSHIP 30 SOUTH, RANGE 5 WEST, WILLAMETTE MERIDIAN
 SURVEYED FOR W. S. HILLMAN BY DON E. GARRETT
 AUGUST 1974

Bearings are based on a Solar Observation taken October 17, 1973.

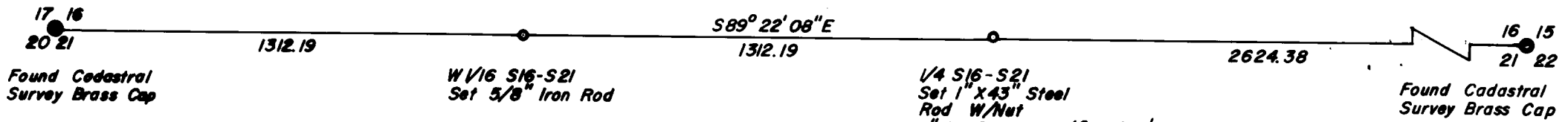
**COUNTY SURVEYORS FILE DATA
 DO NOT REMOVE FROM OFFICE**

SCALE 1" = 400'

FILED *✓*
 RECEIVED *see*

AUG 27 1974

COUNTY SURVEYOR
 DOUGLAS COUNTY, ORE.
mz



REGISTERED
 PROFESSIONAL
 LAND SURVEYOR

Don E. Garrett

OREGON
 JULY 11, 1961
 DON E. GARRETT
 544