

11-12-75

2  
 R10W T20S  
 35 | 36  
 2 T21S

FD:

BRASS CAP, FLUSH IN THE GROUND, FIRMLY SET,

MARKED:

U.S. GENERAL LAND OFFICE SURVEY

T20S | R10W  
 S35 | S36  
 -----  
 T21S R10W  
 S2  
 1951

DIETZGEN NO. 3895-6

THE 1892 BEARING TREES NOTED DURING THE 1951 RESURVEY ARE BOTH DOWN. WE FIND THEM TO BE IN THEIR RECORD POSITIONS.

WE MARK THE FOLLOWING BEARING TREES FOR THE CORNER:

A 31" D. FIR BEARS WEST 30<sup>±</sup> FT.,  
 SCRIBED "T20S R10W S35 CSBT"  
 ON A DOUBLE BLAZE.

~~#56-120-10~~  
~~#56-120-10~~  
 #44-T 21-10

C. S. File No. 5739  
 6

A 25" HEMLOCK BEARS N 37° W 31<sup>2</sup> FT.  
 SCRIBED "TZOS R10W S35 CS BT" ON A  
 DOUBLE BLAZE.

NOTE:

THE NE CORNER OF SEC. 2, TZIS R10W  
 A BRASS CAP, BEARS S 89° 15' E 86<sup>3</sup> FT.

THIS CORNER IS LOCATED ON TOP OF A RIDGE AT  
 THE SW CORNER OF A CLEAR-CUT UNIT.

COMPASS DECLINATION SETTING: 20° EAST

11-12-75

Larry L Langley

CLELL E. GOODWIN

A. VIC CANGIE

M. LENORA LADIG

C. S. File No. 57/39-6

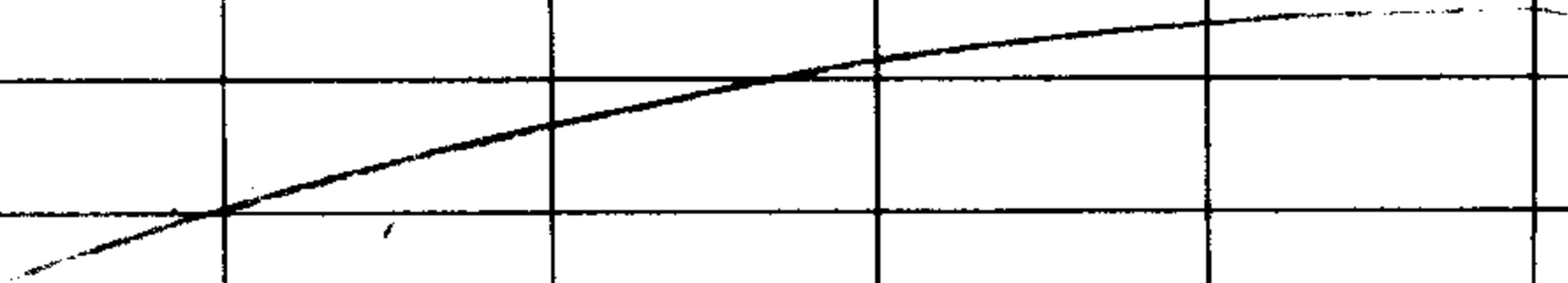
NEW BT 31" D. FIR

3. ....

WEST

30<sup>2</sup> LVL

" T203 R10W S35 CS BT "



NEW BT 25" HEMLOCK

N 37° W

31<sup>2</sup> LVL

" T203 R10W S35 CS BT "