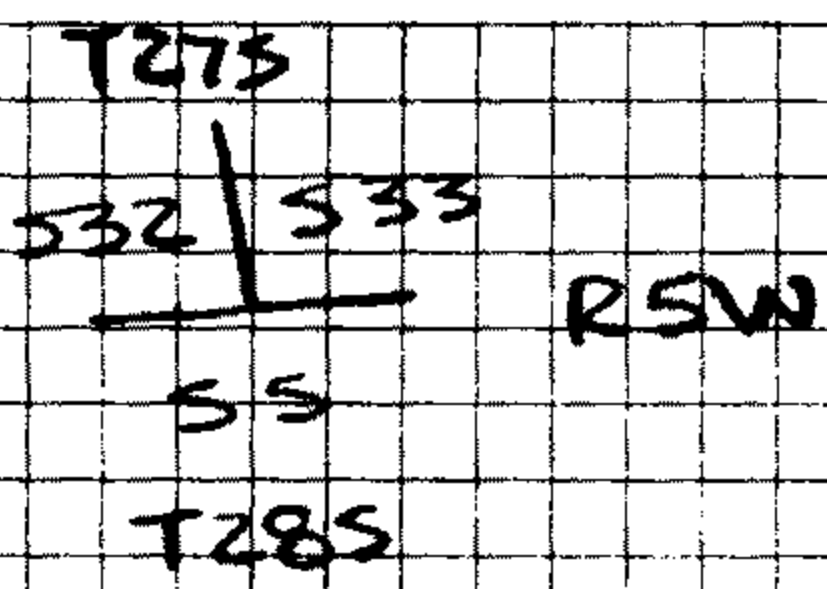


12-16-74



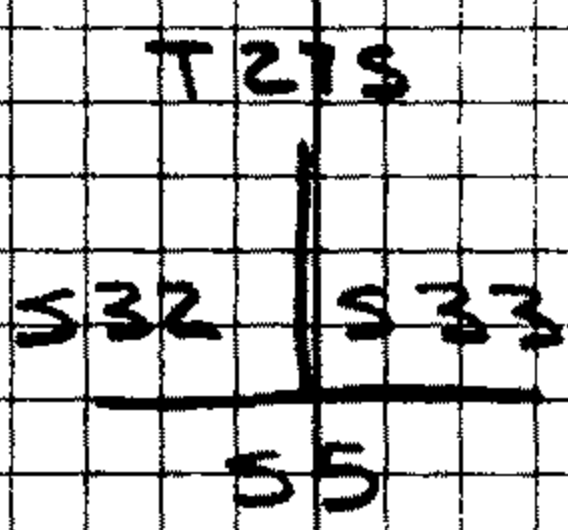
FD:

ORIG. 12" NOW 30" D. FIR, WITH SCRIBING
"R5W T275 S33 CC" VISIBLE ON
PREVIOUSLY OPENED BLAZE.

WE DO NOT FIND THE REMAINING ORIGINAL
BEARING TREE.

AT THE CORNER POINT DETERMINED BY
THE RECORD BEARING & DISTANCE FROM THE
ABOVE NOTED ORIGINAL BT, N42°E
5 ³/₄ FT. WE SET A 1" X 30" I. PIPE WITH
BRASS CAP ATTACHED, MARKED;

COUNTY SURVEYOR'S OFFICE



#141 T275 ✓
 #139 T285 ✓
 T285 R5W

1974

G.S. FILE NO 57/26-1 (OVER)

DIETZEN NO. 385-6

WE MARK THE FOLLOWING NEW BT,

A 12" INCENSE CEDAR BEARS N 24° W
8^B FT., SCRIBED "T27S R5W S32
CS BT" ON A DOUBLE BLAZE.

NOTE: SEE THE ATTACHED LETTERS CONCERN-
ING THE SCRIBING "CC" FOUND ON
THE ORIG. BT.

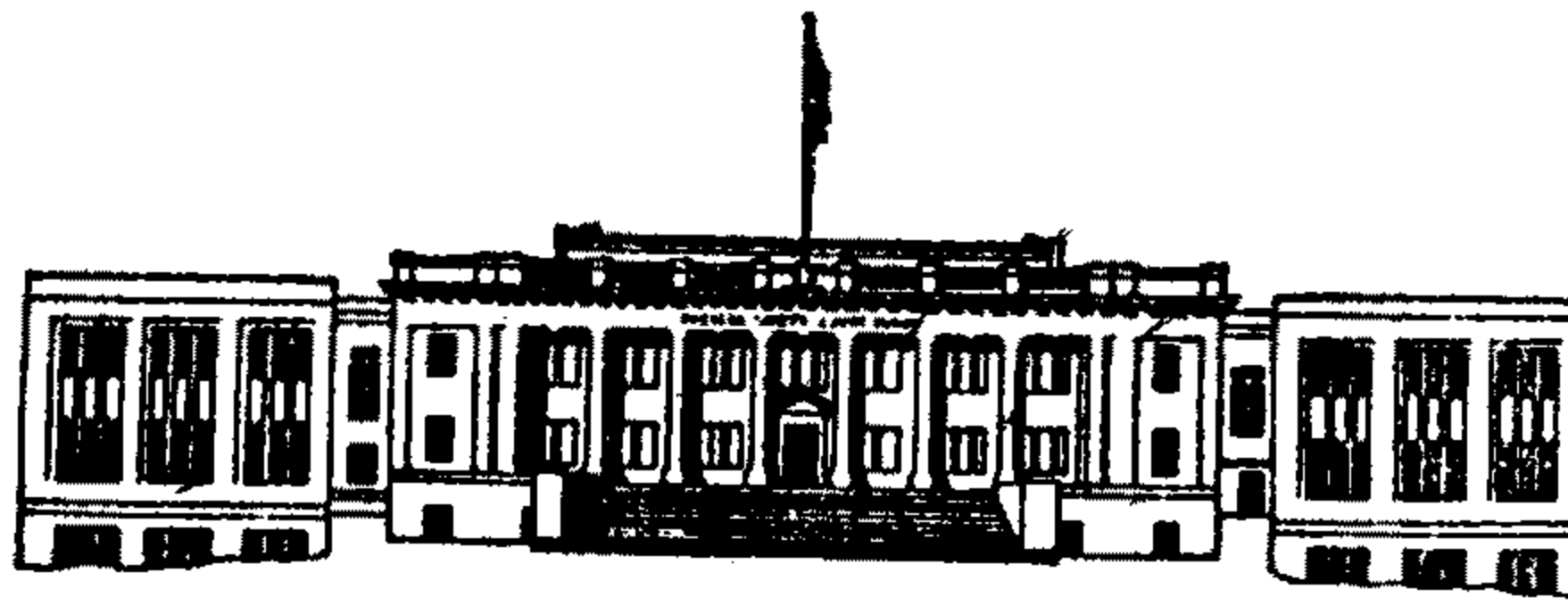
COMPASS DECLINATION SETTING: 20° EAST

12-16-74

Gary L. Langlit

PETER L. EARLE

OK
JL



COUNTY OF DOUGLAS

OFFICE OF THE SURVEYOR

ROSEBURG, OREGON 97470

December 18, 1974

William Glenn, Chief
Branch of Cadastral Engineers
P. O. Box 2965
Portland, OR 97208

Dear Mr. Glenn:

We would like to have your opinion on a problem concerning an original government survey corner, more particularly the southeast corner of Section 32, Township 27 South, Range 5 West, Willamette Meridian. We were requested by an interested party to remonument this corner based on their discovery of an original bearing tree and scribing.

Upon visiting the corner location, we find the original NE bearing tree, an original 12 inch, now 30 inch Douglas fir with scribing "R5W T27S S33 CC" visible. Please refer to the enclosed copies of consecutive pages of the original government survey notes as filed in our office. These notes are from the surveys of Robert Elder and Henry S. Giles, Deputy Surveyors under contract No. 31, dated April 7, 1853.

In your opinion, should the corner in question be marked as a closing corner as the tree scribing would indicate, or should it be the true corner, Sections 32 and 33 only? We feel that the corner in question is the true corner of Sections 32 and 33 on the south boundary of T. 27S., R 5 W. The original survey notes indicate that all the corners on the south boundary of T. 27 S., R. 5 W. were intended to be set on the line. Also, the line to the north between Sections 32 and 33 was run from the corner in question.

In addition, is there any reason why the 1/4 corner of Section 33 on the south boundary of this township should be marked "CC" as indicated on the field notes?

Sincerely,

Gary L. Langlitz

Gary L. Langlitz
Engineering Technician II

GL/vy
Enclosure

U. S. File No. 57/36-1

copy



United States Department of the Interior

BUREAU OF LAND MANAGEMENT

OREGON STATE OFFICE
P.O. Box 2965 (729 N.E. Oregon Street)
Portland, Oregon 97208

IN REPLY REFER TO:

9180 (942)

December 31, 1974

Gary L. Langlitz
Office of County Surveyor
Roseburg, Oregon 97470

Dear Mr. Langlitz:

We have reviewed the field notes and plats of survey for T. 27 S., R. 5 W., and T. 28 S., R. 5 W. The corners established on the north boundary of T. 28 S., R. 5 W., are standard corners as called for in the 1851 manual. The corners established on the south boundary of T. 27 S., R. 5 W., are not closing corners, they are in fact corners of minimum control. As both sets of corners were established along the line of a single survey, each corner controls equally for both measurement and alignment.

It is unusual for "CC" to be called for in the field notes at the 1/4 section corner of section 33 only. It is not a closing corner.

We hope this information is helpful.

Sincerely,

William W. Glenn

William W. Glenn
Chief, Branch of Cadastral
Surveys

C. S. Files No. 57/36-1