

28/25

COUNTY SURVEYORS FILE DATA
DO NOT REMOVE FROM OFFICE

SURVEY FOR DOUGLAS COUNTY DEPT. OF PUBLIC WORKS

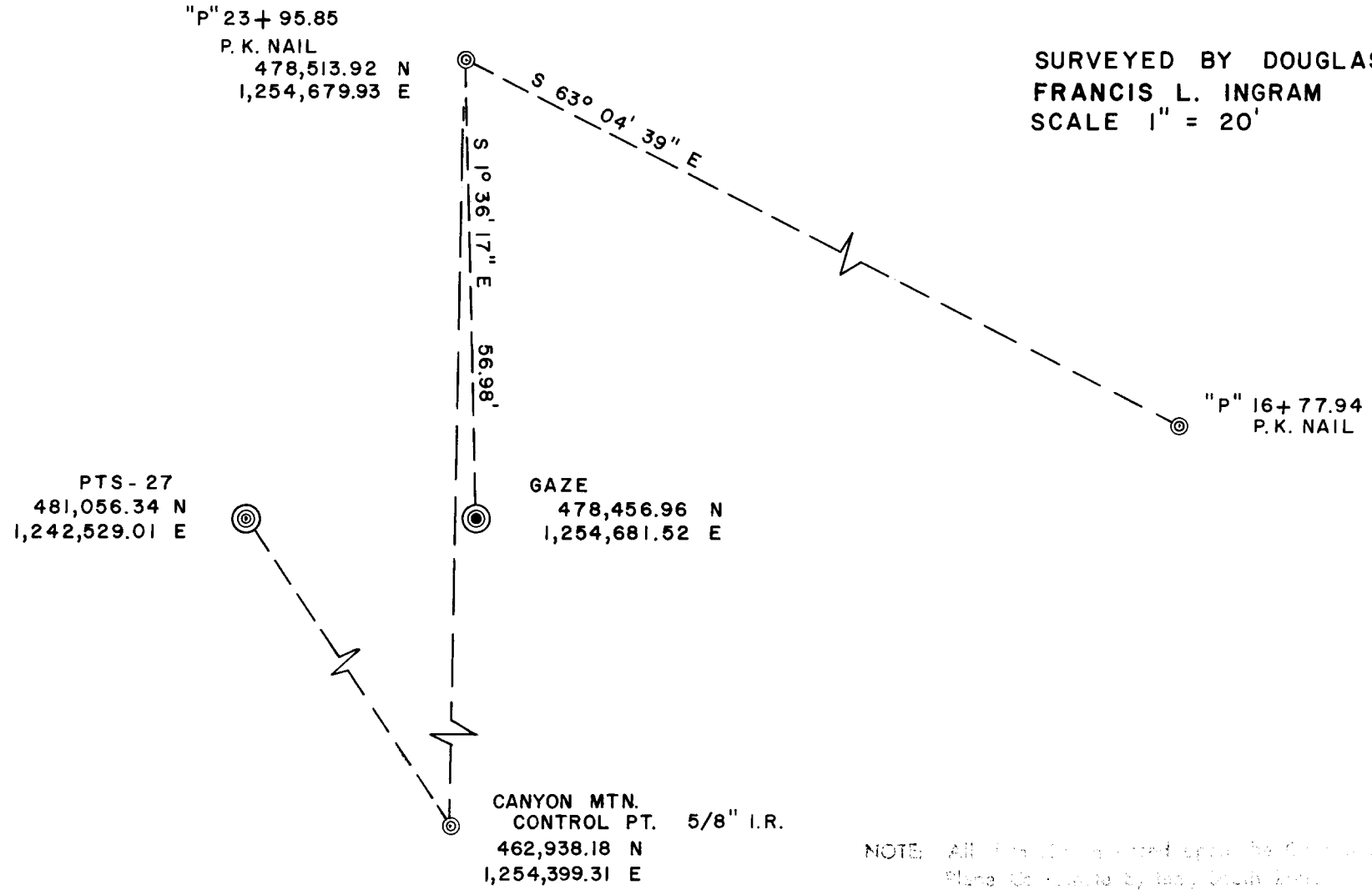
CONTROL FOR GAZLEY ROAD NO. 35 SEC. 22, T. 30S., R. 5 W., W.M.

FILED *d*
RECEIVED *2/2*
MAY 2 1975

COUNTY SURVEYOR
DOUGLAS COUNTY, ORE.

COUNTY SURVEYORS FILE DATA
DO NOT REMOVE FROM OFFICE

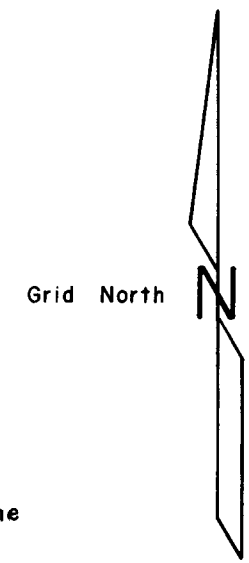
SURVEYED BY DOUGLAS COUNTY SURVEYOR'S OFFICE
FRANCIS L. INGRAM
SCALE 1" = 20'
COUNTY SURVEYOR
MAY, 1975



REGISTERED
PROFESSIONAL
LAND SURVEYOR

Francis L. Ingram

OREGON
JULY 11, 1969
FRANCIS L. INGRAM
902



- — — — — Computed Line
- ⊙ Fd. Monument - as noted
- ⊙ Fd. Brass Cap
- ⊙ Set Brass Cap
- - - - - Traverse Line

NOTE: All lines shown are computed from the control points shown. No field notes were taken by this office.