

COUNTY SURVEYORS FILE DATA
DO NOT REMOVE FROM OFFICE

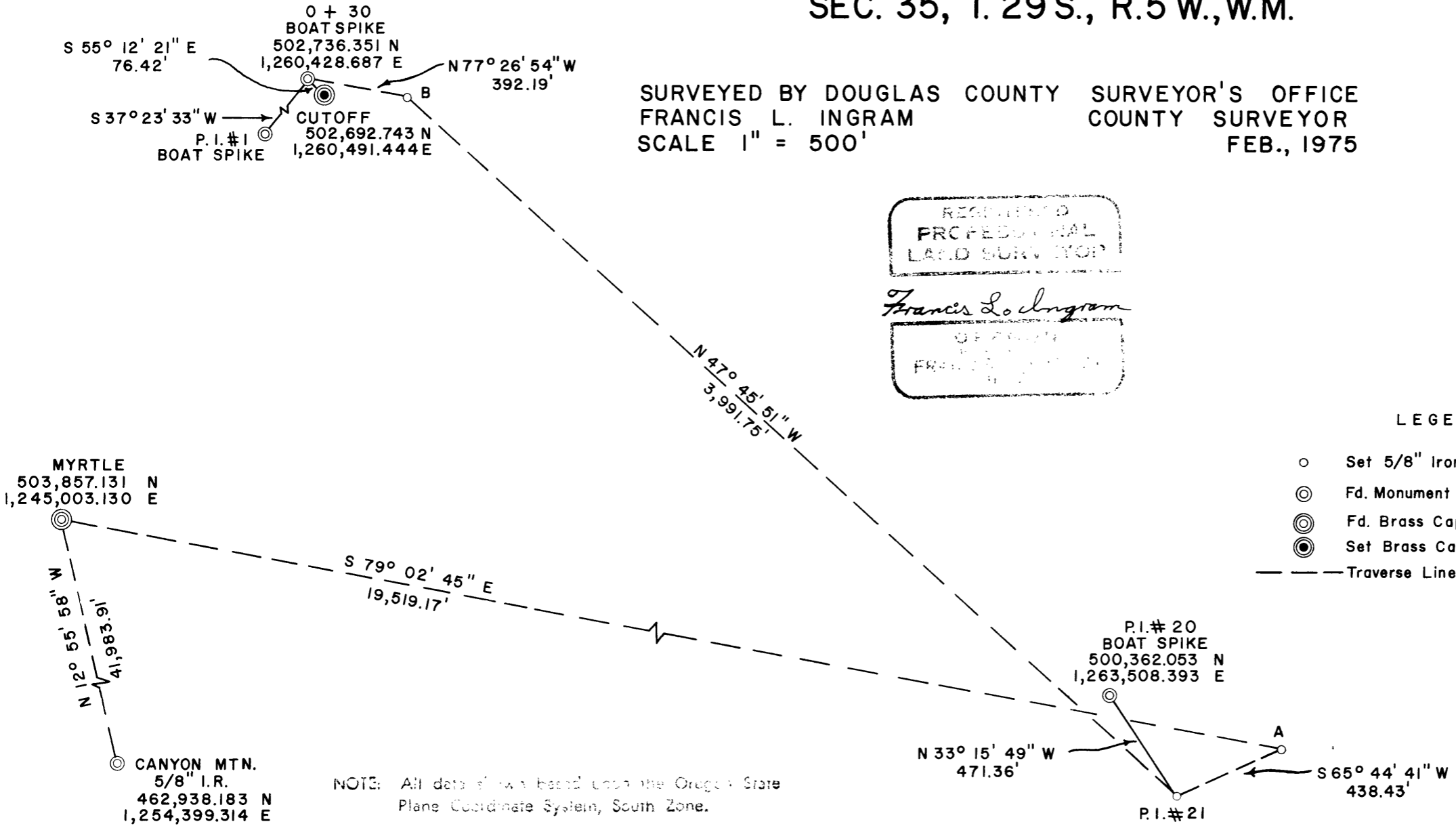
SURVEY FOR DOUGLAS COUNTY DEPT. OF PUBLIC WORKS (ROAD CONTROL) SEC. 35, T. 29 S., R. 5 W., W.M.

FILED *✓*
RECEIVED *7/8*

MAR 11 1975

COUNTY SURVEYOR
DOUGLAS COUNTY, ORE.

SURVEYED BY DOUGLAS COUNTY SURVEYOR'S OFFICE
FRANCIS L. INGRAM COUNTY SURVEYOR
SCALE 1" = 500'
FEB., 1975



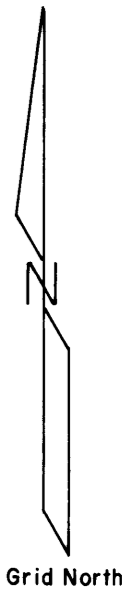
NOTE: All data shown based upon the Oregon State Plane Coordinate System, South Zone.

REGISTERED
PROFESSIONAL
LAND SURVEYOR

Francis L. Ingram

DOUGLAS COUNTY
FRANCIS L. INGRAM
SURVEYOR

- LEGEND
- Set 5/8" Iron Rod
 - ⊙ Fd. Monument - as noted
 - ⊗ Fd. Brass Cap
 - ⊕ Set Brass Cap
 - Traverse Line



57/20