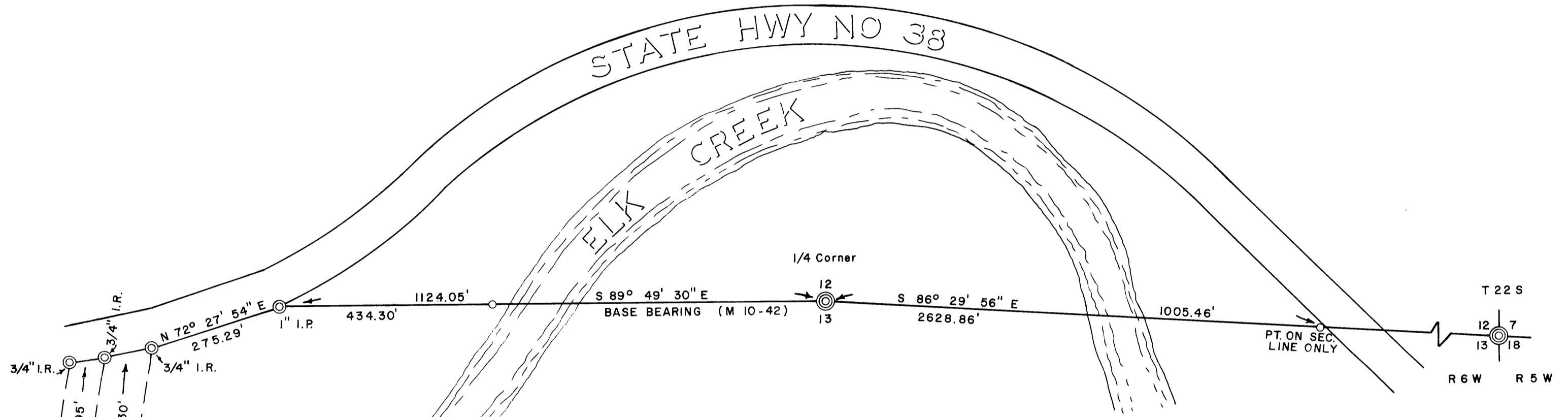


SURVEY FOR
DOUGLAS COUNTY LAND DEPT.
SECS. 12 & 13, T. 22S., R. 6 W., W. M.

FILED ✓
RECEIVED *KR*
DEC 23 1974
COUNTY SURVEYOR
DOUGLAS COUNTY, ORE.
✓

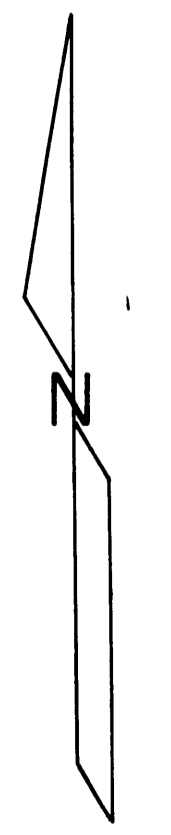
COUNTY SURVEYORS FILE DATA
DO NOT REMOVE FROM OFFICE



LEGEND

- ⊙ Fd. Brass Cap
- ⊙ Fd. Monuments - as noted
- Set 5/8" Iron Rod

Scale: 1" = 200'



SURVEYED BY
COUNTY SURVEYOR'S OFFICE
DOUGLAS COUNTY, OREGON

DEC., 1974
FRANCIS L. INGRAM
COUNTY SURVEYOR

Francis L. Ingram

57 15
M55 5

*W/4th T. 22S. R. 6W. FILED
11-55-5*