

COUNTY SURVEYORS FILE DATA
DO NOT REMOVE FROM OFFICE

FILED ✓
RECORDED 2

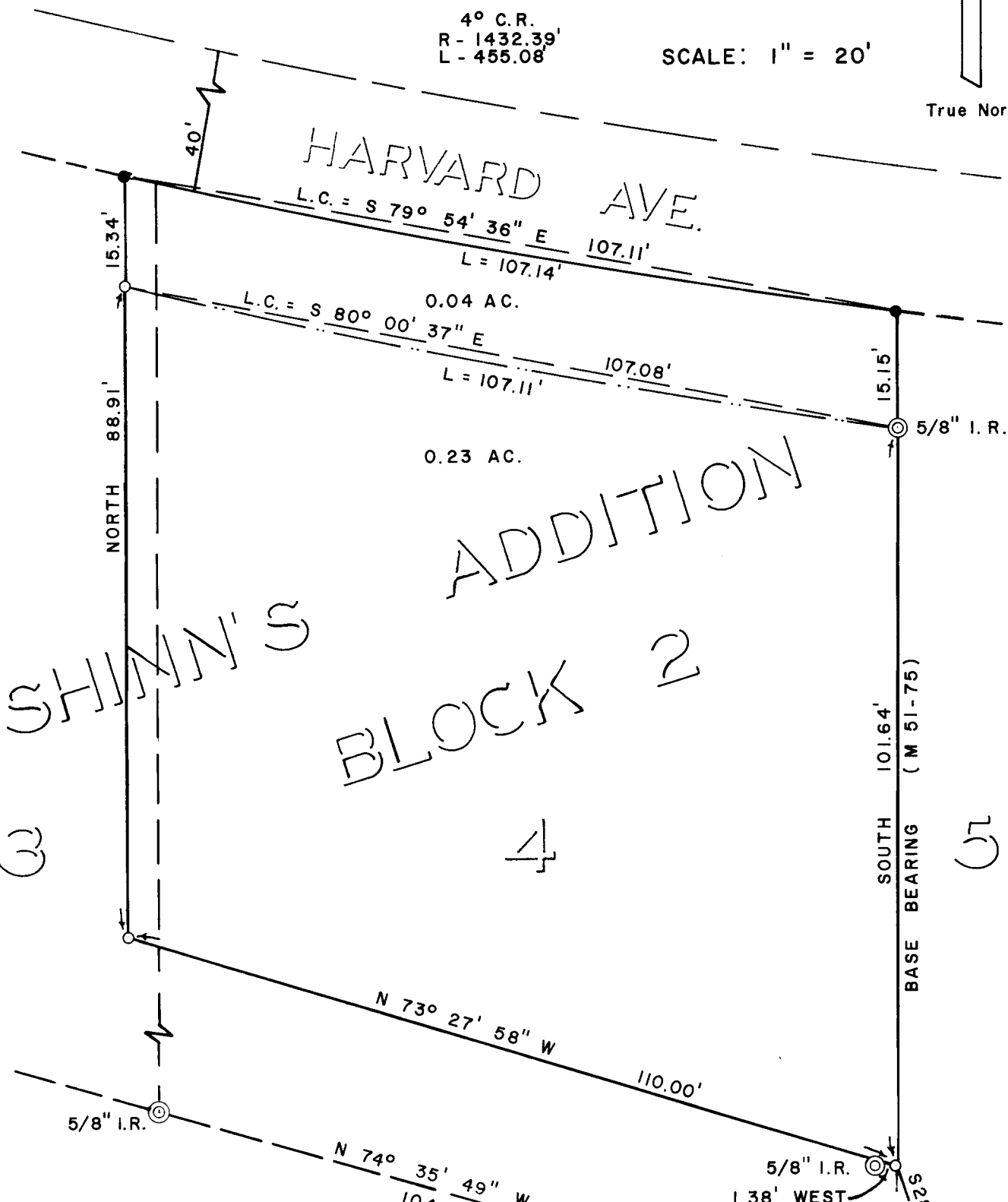
SURVEY FOR
DOUGLAS COUNTY LAND DEPT.
IN LOTS 3 & 4 OF BLOCK 2
SHINN'S ADDITION
SEC. 23, T. 27 S., R. 6 W., W.M.

COUNTY SURVEYOR
DOUGLAS COUNTY, ORE.



4° C.R.
R - 1432.39'
L - 455.08'

SCALE: 1" = 20'



SURVEYED BY
COUNTY SURVEYOR'S OFFICE
DOUGLAS COUNTY, OREGON
DEC., 1974

FRANCIS L. INGRAM
COUNTY SURVEYOR

REGISTERED
PROFESSIONAL
LAND SURVEYOR

Francis L. Ingram

FRANCIS L. INGRAM
COUNTY SURVEYOR

LEGEND

- Computed - not set
- Set 5/8" Iron Rod
- ⊙ Fd. Monuments - as noted

added 11/20/84
⊙ 1" I.P.
S.E. Cor. Block 2

57/14

CS FILE FOLDER

CONTAINS

MORE

INFORMATION