

COUNTY SURVEYORS FILE DATA
DO NOT REMOVE FROM OFFICE

ROAD CONTROL SURVEY

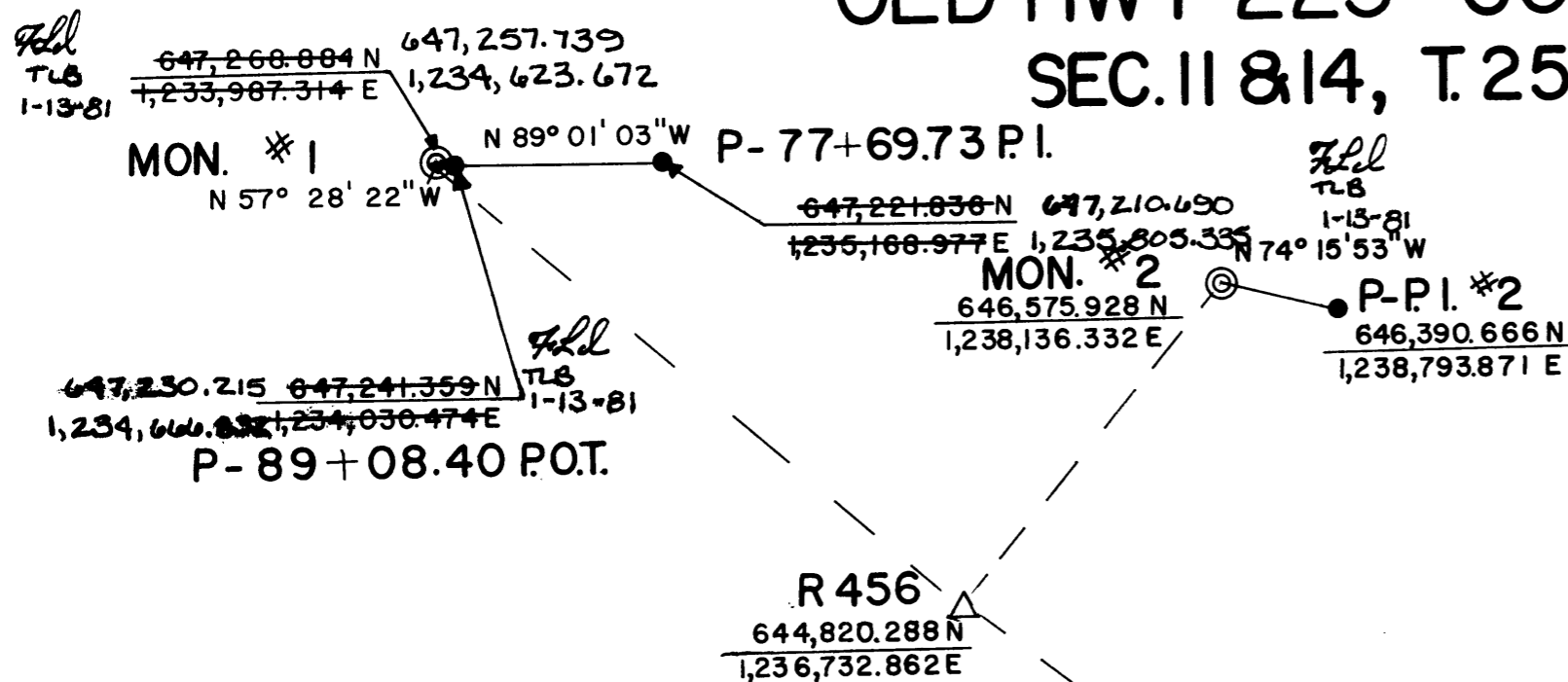
OLD HWY 225 - COUNTY ROAD NO. 10

SEC. 11 & 14, T. 25 S., R. 6 W., W.M.

FILED
RECEIVED *7/11*

JUL 11 1974

COUNTY SURVEYOR
DOUGLAS COUNTY, ORE.



SURVEYED FOR DOUGLAS COUNTY
SURVEYED BY DOUGLAS COUNTY SURVEYOR'S OFFICE
FRANCIS L. INGRAM
SCALE 1 = 1000
COUNTY SURVEYOR
JULY 1974

SURVEY BASED ON GEODETIC CONTROL STATIONS
UMPQUA S.W. BASE AND UMPQUA N.E. BASE.



- △ BRASS CAP FOUND
- ⊙ BRASS CAP SET
- BOAT SPIKE FOUND

UMPQUA N. E. BASE
 $\frac{642,951.524 \text{ N}}{1,247,942.145 \text{ E}}$

⊙ SCHUDIESKE
 $\frac{639,723.781 \text{ N}}{1,242,066.694 \text{ E}}$

$\frac{627,408.699 \text{ N}}{1,205,691.219 \text{ E}}$ △ UMPQUA S.W. BASE

NOTE: All data shown based upon the Oregon State Plane Coordinate System, South Zone.

REGISTERED
PROFESSIONAL
LAND SURVEYOR
Francis L. Ingram
OREGON
JULY 11, 1974
FRANCIS L. INGRAM
902