

COUNTY SURVEYORS FILE DATA  
DO NOT REMOVE FROM OFFICE

FILED ✓  
RECEIVED *dy*

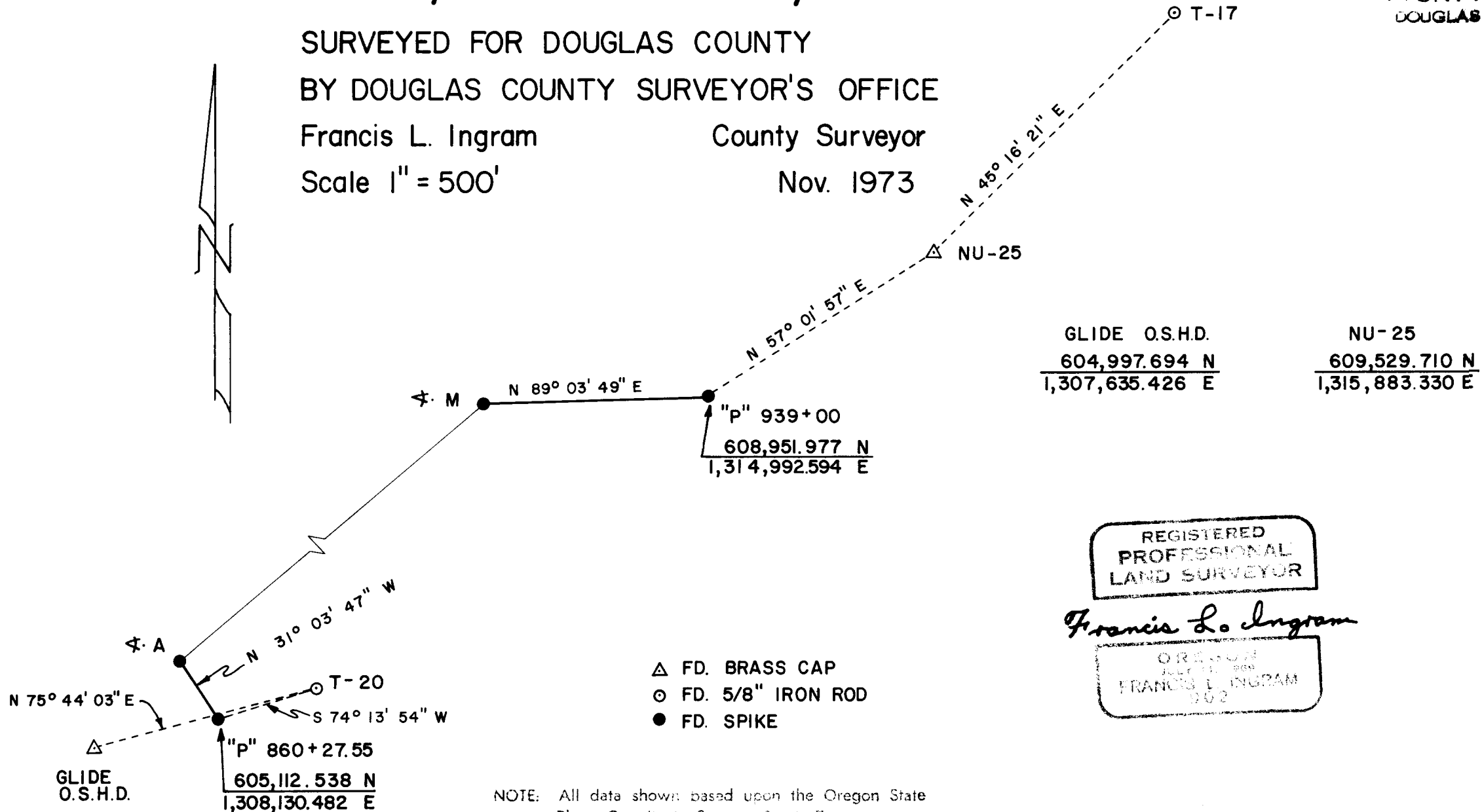
FEB 21 1974

COUNTY SURVEYOR  
DOUGLAS COUNTY, ORE.

ROAD CONTROL SURVEY  
Old North Umpqua Hwy., Rd. No. 4B  
Sec. 17, 18 & 19 T. 26 S., R. 3 W. W.M.

SURVEYED FOR DOUGLAS COUNTY  
BY DOUGLAS COUNTY SURVEYOR'S OFFICE  
Francis L. Ingram County Surveyor  
Scale 1" = 500'

Nov. 1973



- △ FD. BRASS CAP
- FD. 5/8" IRON ROD
- FD. SPIKE

NOTE: All data shown based upon the Oregon State Plane Coordinate System, South Zone.

REGISTERED  
PROFESSIONAL  
LAND SURVEYOR

*Francis L. Ingram*

OREGON  
JULY 11, 1968  
FRANCIS L. INGRAM  
902

CS FILE FOLDER

CONTAINS

MORE

INFORMATION