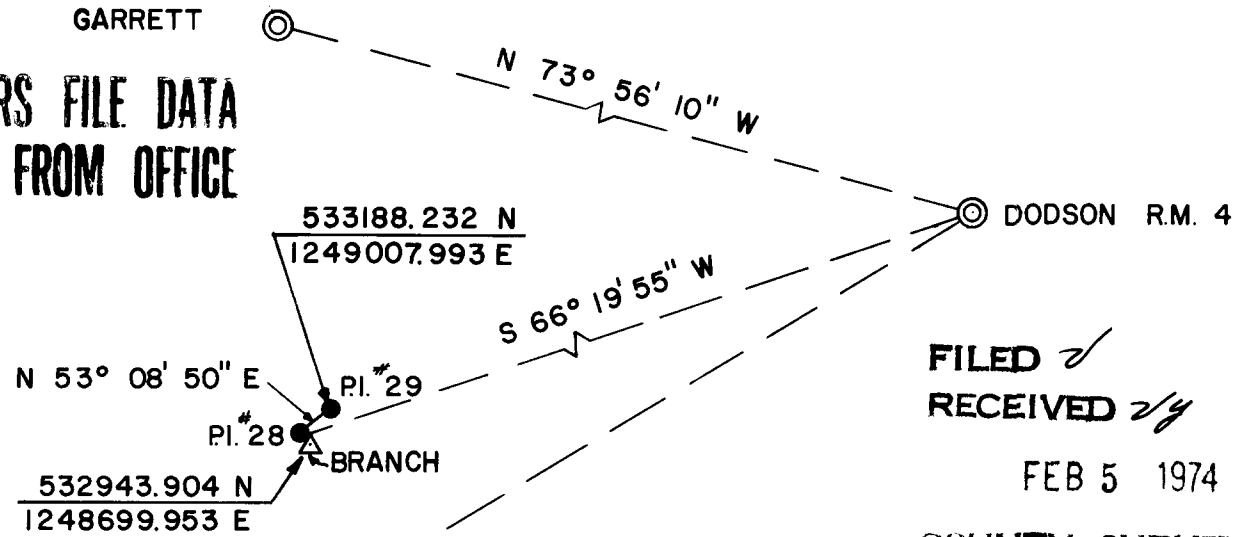
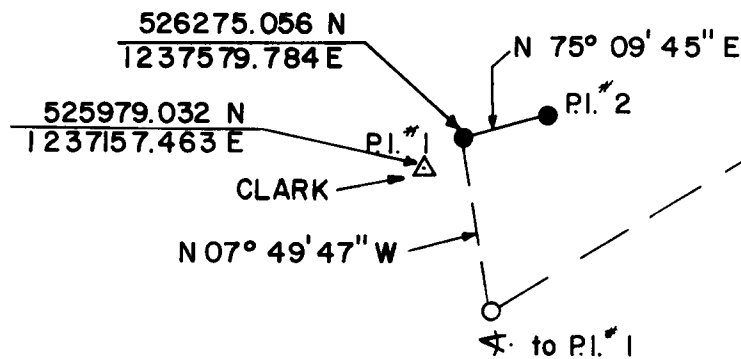


**ROAD CONTROL SURVEY  
CLARKS BRANCH ROAD NO. 105  
T. 28 & 29 S., R. 5 & 6 W., W.M.**

**COUNTY SURVEYORS FILE DATA  
DO NOT REMOVE FROM OFFICE**

SURVEYED FOR DOUGLAS COUNTY  
SURVEYED BY DOUGLAS COUNTY SURVEYOR'S OFFICE  
FRANCIS L. INGRAM COUNTY SURVEYOR  
SCALE 1" = 2000' JAN. 1974

- ⊙ Brass Cap Found
- △ Brass Cap Set
- Boat Spike Found



**FILED** ✓  
**RECEIVED** 2/4

FEB 5 1974

**COUNTY SURVEYOR  
DOUGLAS COUNTY, ORE.**

Survey Based on Geodetic  
Control Stations Garrett  
and Dodson R.M. 4.

**GARRETT**  
552649.46 N  
1228648.49 E

**DODSON R.M. 4**  
541356.363 N  
1267866.998 E



REGISTERED  
PROFESSIONAL  
LAND SURVEYOR

*Francis L. Ingram*

OREGON  
JULY 11, 1969  
FRANCIS L. INGRAM  
902

NOTE: All data shown based upon the Oregon State  
Plane Coordinate System, South Zone.

CS FILE FOLDER

CONTAINS

MORE

INFORMATION