

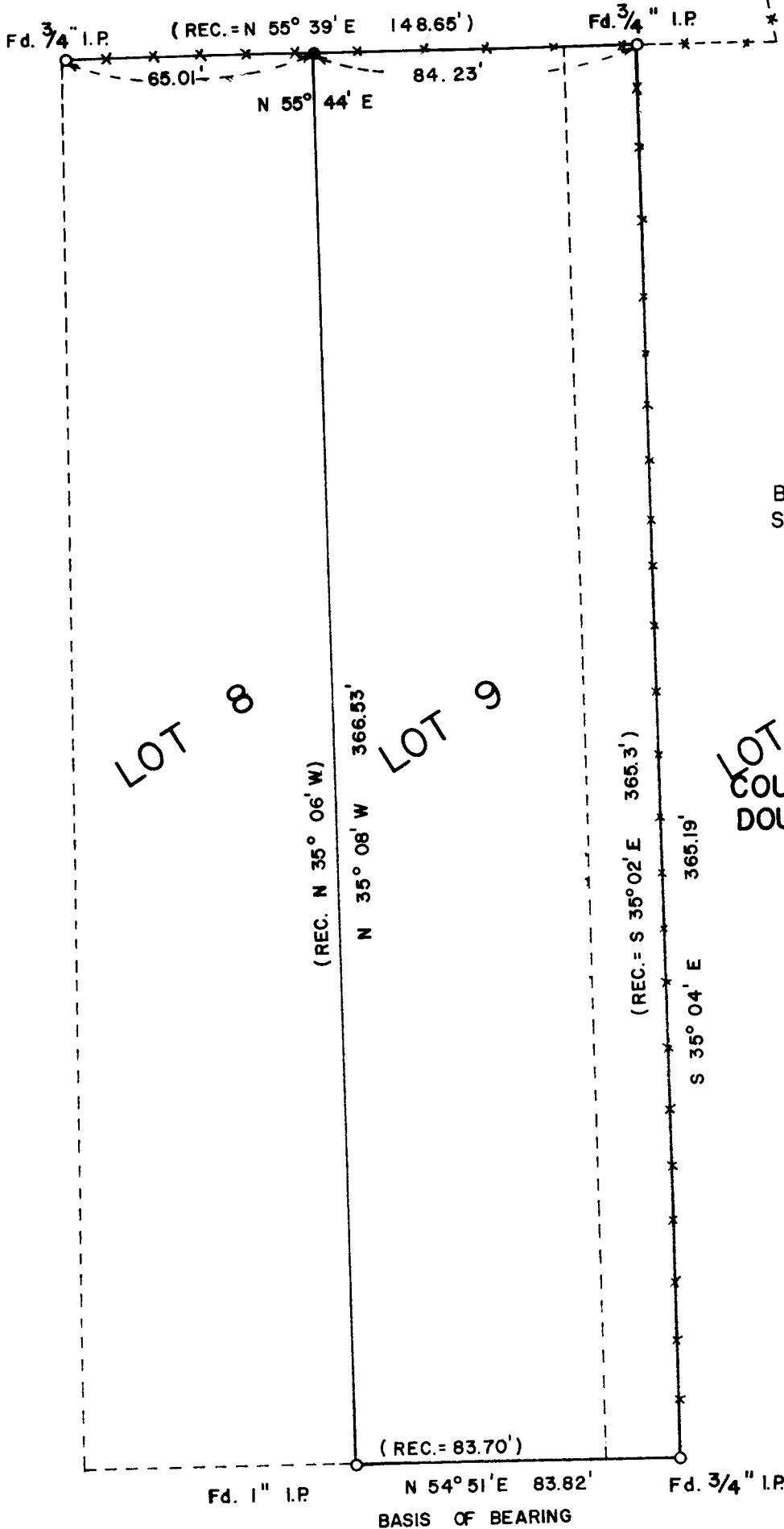
SURVEY FOR CHARLES JEFFERS

IN LOTS 8,9,&10 OF THE PLAT OF
SOUTHVIEW BK. 2
SECTION 2, T28S.,R6W., W.M.

FILED *7/7*
RECEIVED *7/7*

COUNTY SURVEYOR
DOUGLAS COUNTY, OREGON

COUNTY SURVEYOR'S FILE DATA
DO NOT REMOVE FROM OFFICE



TRUE NORTH
SCALE 1" = 40'
BEARINGS BASED ON
SURVEY C.S. 40/374

LOT 10
SURVEYED BY
COUNTY SURVEYOR'S OFFICE
DOUGLAS COUNTY, OREGON

AUGUST 8, 1973
FRANCIS L. INGRAM
COUNTY SURVEYOR

LEGEND
● = 5/8" IRON ROD SET

REGISTERED
PROFESSIONAL
LAND SURVEYOR

Francis L. Ingram

NOV 17 1973
DOUGLAS COUNTY, OREGON

CS FILE FOLDER

CONTAINS

MORE

INFORMATION