

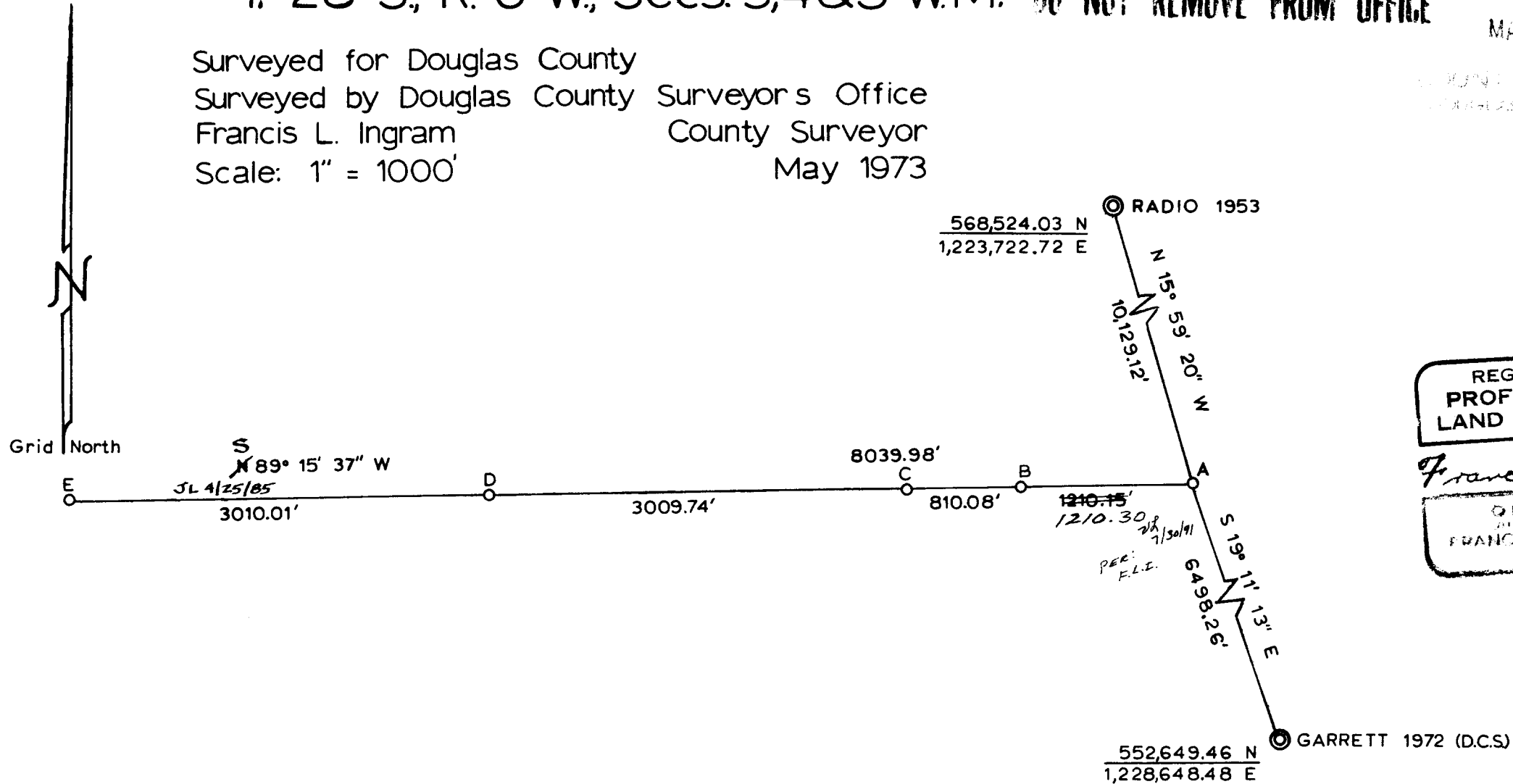
# HAPPY VALLEY BASE LINE

T. 28 S., R. 6 W., Secs. 3,4&5 W.M.

COUNTY SURVEYORS FILE DATA  
 DO NOT REMOVE FROM OFFICE

FILED  
 RECEIVED  
 MAY 7 1973  
 COUNTY SURVEYOR  
 DOUGLAS COUNTY, ORE.

Surveyed for Douglas County  
 Surveyed by Douglas County Surveyors Office  
 Francis L. Ingram  
 Scale: 1" = 1000'  
 County Surveyor  
 May 1973



REGISTERED  
 PROFESSIONAL  
 LAND SURVEYOR  
*Francis L. Ingram*  
 OREGON  
 FRANCIS L. INGRAM  
 902

**NOTE:**

All data shown based upon the Oregon State Plane Coordinate System, South Zone.

- ⊙ Concrete Monument Found
- Set Brass Cap in Concrete Monument

CS FILE FOLDER

CONTAINS

MORE

INFORMATION